

## Introduction

A range of wall mounted DALI–2 dimmers with a built-in DALI power supply. Only a mains connection (Active and Neutral) and DALI connections (DA/DA) are required. No external DALI power supply or other equipment is required. No programming of the device or DALI drivers is required.

## Features

- Compatible to DALI2 compliant driver
- Simple on/off and dimming control for DALI–2 & DALI light fixtures
- Colour temperature control (requires DGDALIDM8 model and DALI Type 8 LED drivers)
- Built in 125mA DALI power supply
- Able to control up to 50 DALI–2 & DALI drivers on a single DALI line
- Can be connected in parallel on a DALI Line for multi-point control (see pages 3 and 4)
- Configurable minimum brightness setting

## Operation

### DGDALIDM

- Click the rotary knob to switch ON/OFF all the connected DALI–2 & DALI light fixtures
- Rotate the knob clockwise to increase light intensity from 1% to 100%
- Rotate the knob counter clockwise to decrease light intensity from 100% to 1%

### DGDALIDM8

- Click the rotary knob to switch ON/OFF all the connected light fixtures
- Rotate the knob clockwise to increase light intensity from 1% to 100%
- Rotate the knob counter clockwise to decrease light intensity from 100% to 1%
- Double-click the dimmer knob and then turn the dial to increase or decrease the colour temperature (**NOTE: this function is only available when used in conjunction with Colour Temperature Tc Driver / Luminaire.** Fixtures with standard DALI drivers will dim up/down using a DGDALIDM8, but are not colour tuneable.

## Applications

Suitable for a wide range of indoor applications which require simple manual control of DALI–2 & DALI fixtures. For example:-

- Open Plan commercial offices
- Meeting Rooms
- Board rooms
- Executive offices
- School classrooms
- Hospital wards

## Specifications

Operating Main Voltage	100-240Vac
Operating Mains Frequency	50/60Hz
Power Consumption	2.3W max.
DALI Power Supply	In-built, Supplies 125mA max to a DALI Line
Ambient Temperature	0-50°C
IP Rating	IP20
DALI Messaging	DALI Broadcast
Dimensions	120mm x 75mm x 53mm

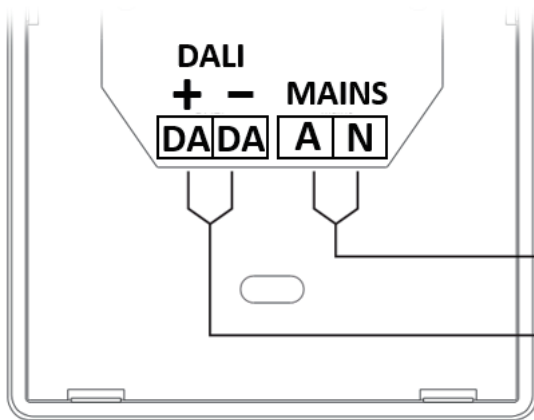
## Wiring



Installation of this device must be carried out by a licenced electrician who must work in accordance with standard safety procedures for mains-powered electrical equipment.

Electric shock may result in serious injury or death. Follow all warnings in this guide while working in accordance with the latest electrical safety practices.

### Rear of the device



#### Note

**DALI Line must be wired with 1.5mm<sup>2</sup> double insulated cable.**  
**Maximum total length of DALI Line is 300m.**

**240Vac Active and Neutral**

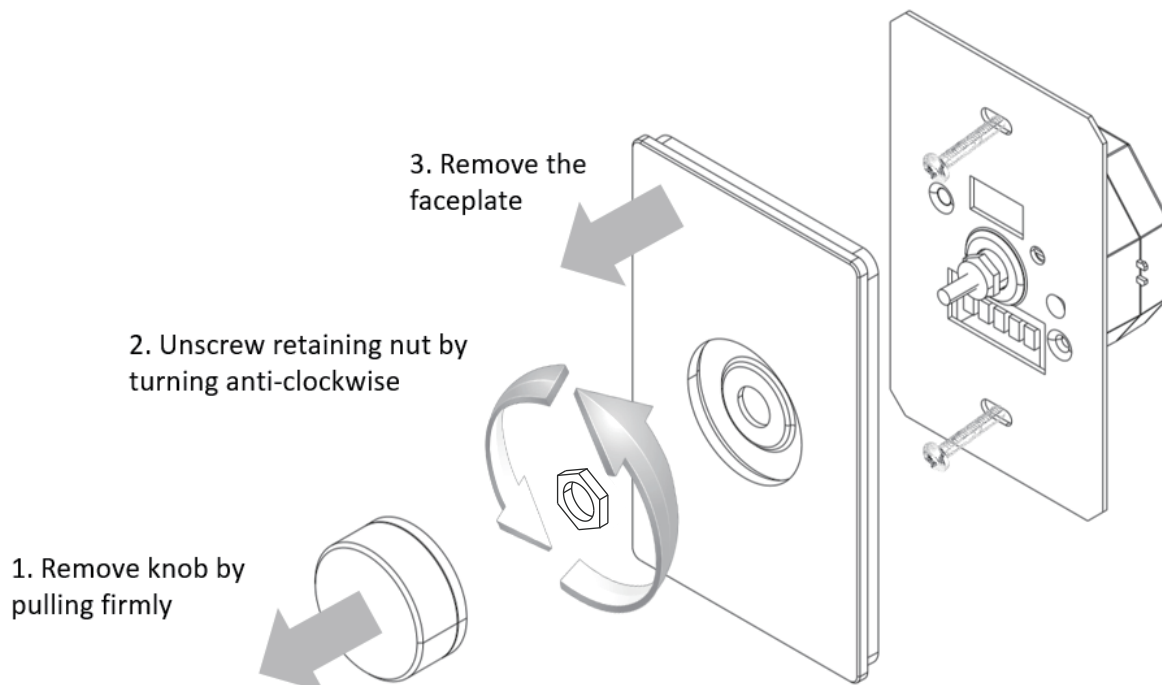
**DALI Connections**

## Installation

The device is wall mounted using a standard plaster bracket, wall box or other suitable standard electrical accessory.

5. Reassemble

4. Mount the rear assembly to a standard plaster bracket, wall box or other suitable electrical accessory



## Optional Settings

### Setting the minimum dimming level (DGDALIDM and DGDALIDM8)

By default, the minimum dimming level is set to 1%. If required, this minimum level can be adjusted as follows.

1. Use the dimmer knob to manually dim the connected DALI-2 & DALI lighting to the minimum required level
2. With the lighting at the minimum required level, press and hold the dimmer knob for 5 seconds
3. The connected DALI-2 & DALI lights will flash once and the minimum dimmed level is set.

### Resetting the minimum dimming level back to the default 1% minimum (DGDALIDM and DGDALIDM8)

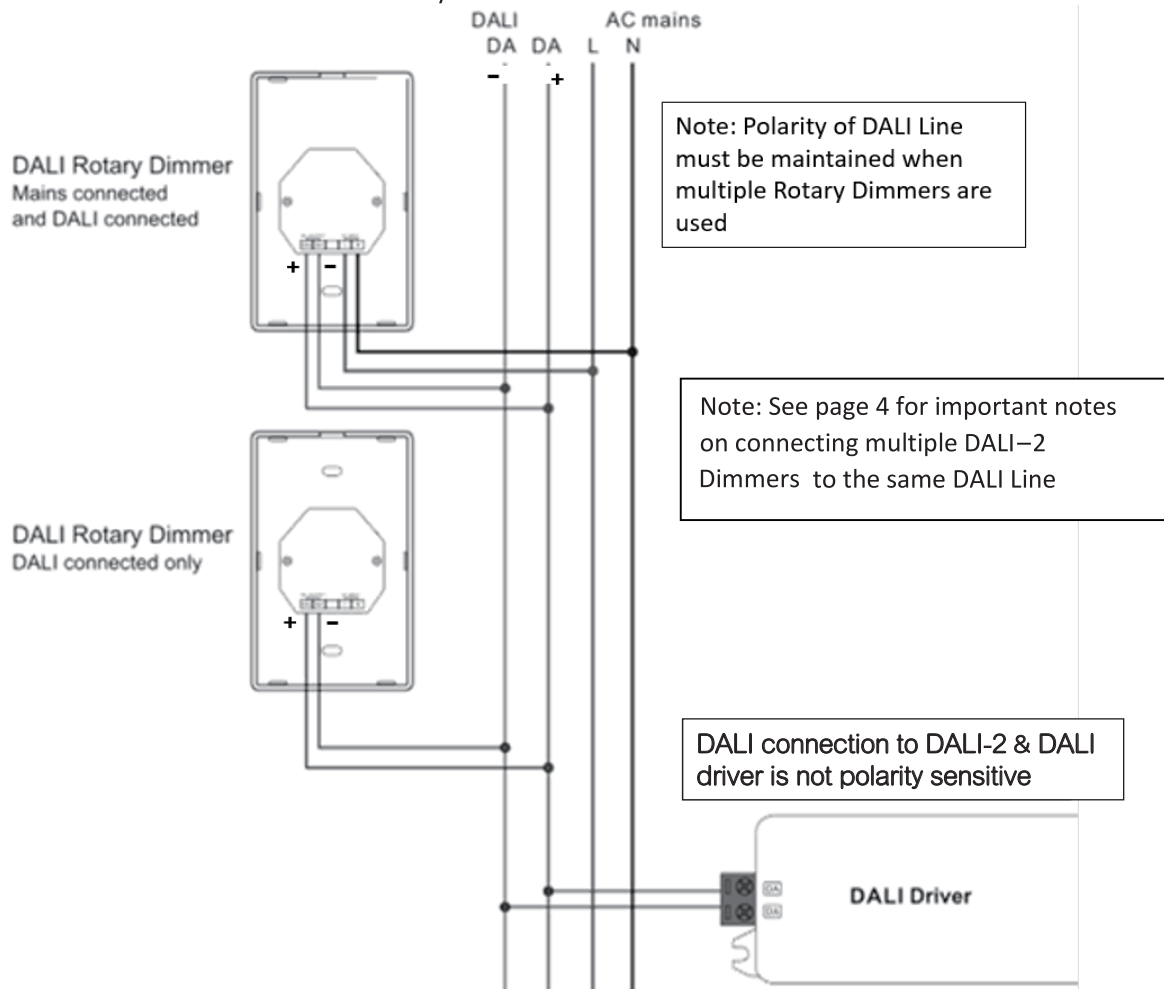
1. Press the dimmer knob to switch the connected DALI-2 & DALI lighting off
2. With the connected DALI-2 & DALI lighting off, press and hold the knob for 5 seconds
3. The connected DALI-2 & DALI lighting will flash once and the minimum dimmed level is reset to 1%.

### Setting the Colour temperature (DGDALIDM8 only, DALI Type 8 LED Colour Temperature Tc Driver / Luminaire required)

1. Ensure the connected DALI-2 & DALI Type 8 lighting is switched on
2. Double-click the dimmer knob
3. The connected DALI-2 & DALI lighting will flash twice
4. The dimmer is now in colour tuning mode
5. Turn the dial to increase or decrease the colour temperature
6. To return to dimming mode, double-click the dial
7. The connected DALI-2 & DALI lighting will flash twice and normal dimming mode is set.

## Connecting Multiple DALI-2 Dimmers

To provide multi-way control, up to 4 DALI-2 dimmers can be connected to a single DALI line. An example, providing two-way control is shown below. Noted that only one of the DALI-2 dimmers needs to be connected to mains.



## IMPORTANT NOTES FOR MULTI-WAY CONNECTED DALI–2 DIMMERS

- Do not connect more than two mains powered DALI–2 Dimmers to a DALI Line. **Connecting more than two mains powered units to a DALI line can permanently damage all DALI devices or affect DALI communications.**
- Combinations of mains and non-mains powered devices must only be connected as indicated in the ‘Allowed’ column below.

Number of DALI – 2 Dimmers connected to a DALI Line (4 max)	Number of Mains and DALI connected DALI – 2 Dimmers	Number of DALI only connected DALI–2 Dimmers	Allowed Yes/No
1	1	0	Yes
1	0	1	No
2	2	0	Yes
2	1	1	Yes
2	0	2	No
3	2	1	Yes
3	1	2	Yes
3	3	0	No
3	0	3	No
4	1	3	Yes
4	2	2	Yes
4	3	1	No
4	4	0	No
4	0	4	No

## Using 3<sup>rd</sup> Party DALI Power Supplies

If required, DALI–2 Rotary Dimmers will function with an external DALI power supply connected to the DALI Line. However, in this configuration **DO NOT connect any DALI–2 Rotary Dimmers to mains, only connect them to DALI.**

**IMPORTANT:** If an external DALI power supply is connected to the DALI Line, connecting the DALI–2 Rotary Dimmer to mains will exceed the maximum current allowed on a DALI line and can permanently damage DALI devices or affect DALI communications.

### Warranty

Warranty of 2 years against manufacturing defects or failure to perform to specifications for products installed by an authorised installer in accordance with the manufacturer’s installation instructions and which have not been subject to incorrect operation or maintenance, unauthorised modification or damage arising from any intervening cause. The warranty reference date commences from the date of purchase.

**Product of Signify Innovations Australia Pty Ltd**  
 ABN – 89 095 788 864  
 96-112 Gow Street  
 Padstow NSW 2211

**Contact**  
 1300 799 300

Diginet is a brand of Signify Innovations Australia Pty Ltd and Signify New Zealand Limited.

Issue: May 22, 2024