



GENERAL CHARACTERISTICS

Housing/cover: made of die-cast aluminium.

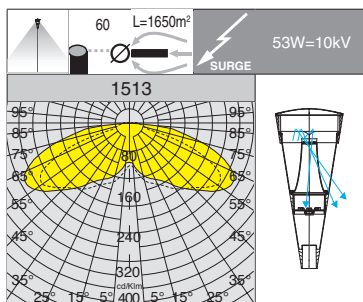
Diffuser: in transparent, vandal-resistant and V2 self-extinguishing polycarbonate, UV-stabilized.

Coating: the standard liquid immersion coating consists of a first metal surface pre-treatment stage, a successive epoxy cataphoresis corrosion and salt resistant coating, and a final layer of bi-component acrylic liquid UV-stabilised coating.

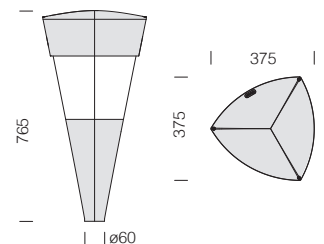


Upon request: coating compliant with UNI EN ISO 9227 Corrosion tests in artificial atmospheres for aggressive environments.

Standard supply: Automatic temperature control inside the device with automatic resetting. Safety diode to protect against voltage peaks compliant with EN 61547. With dedicated electronic device to protect the LED module. Complete with quick connection. Art. 1513 supplied with double insulation switch.



IP66IK08



Reflector art. 1513: made of specular aluminium

LED: Power factor ≥ 0.9 .
Luminous flux maintenance 80%:
50.000h (L80B20).

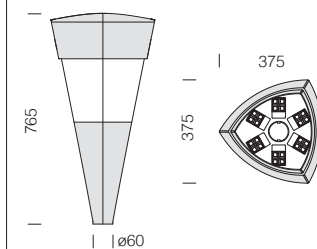
1513 Torcia - COB

		CLD		LUMEN OUTPUT (tq= 25 °C)	
wattage (1400mA)	colour	weight	code	W tot	K - ølm 1400mA - CRI
LED COB	grey 9007	7.40	423250-00	53	4000K - 5060lm - CRI \geq 80
	graphite		423251-00		
LED COB	grey 9007	7.40	423250-39	53	3000K - 4706lm - CRI \geq 80
	graphite		423251-39		

1513 Torcia - COB - anti-light pollution

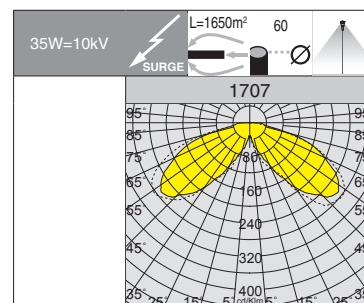
		CLD		LUMEN OUTPUT (tq= 25 °C)	
wattage (1400mA)	colour	weight	code	W tot	K - ølm 1400mA - CRI
LED COB	grey 9007	7.40	423250-0016	53	4000K - 4048lm - CRI \geq 80
	graphite		423251-0016		

IP66IK08



Optics: Optics made of PMMA with high temperature resistance and UV rays.

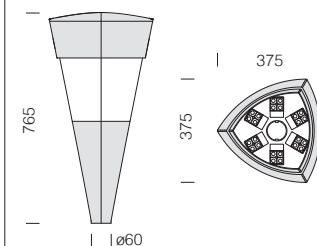
LED: Power factor ≥ 0.9 .
Luminous flux maintenance 80%:
80.000h (L80B20).



1707 Torcia					
		CLD PROG			LUMEN OUTPUT (tq= 25 °C)
wattage (240mA)	colour	weight	code	W tot	K - ølm 240mA - CRI
LED	grey 9007	7.40	423252-00	35	4000K - 4600lm - CRI>70
	graphite		423253-00		
LED	grey 9007	7.40	423252-39	35	3000K - 4278lm - CRI>70
	graphite		423253-39		
Integrated ADVANCED PROG functions (see page XVI-XX).					

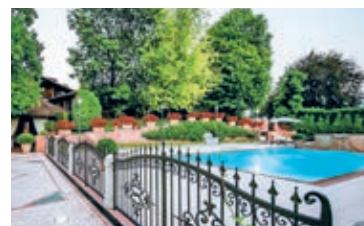
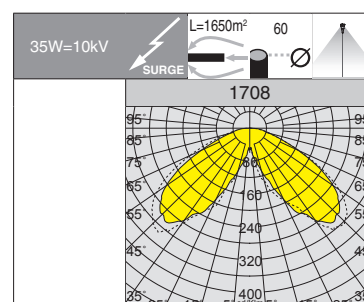
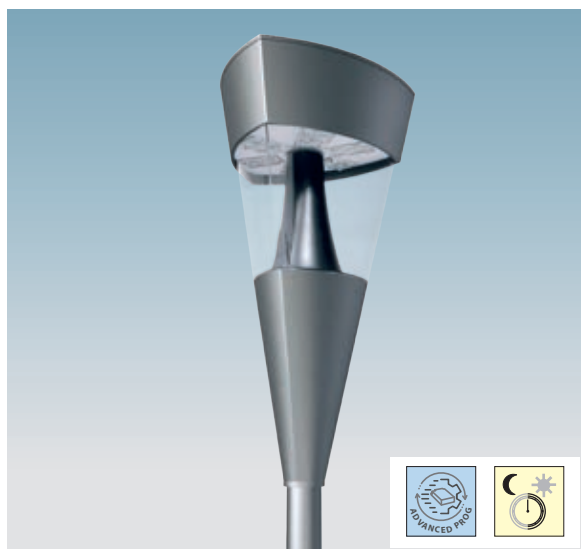


IP66IK08



Optics: Optics made of PMMA with high temperature resistance and UV rays.

LED: Power factor ≥ 0.9 .
Luminous flux maintenance 80%:
80.000h (L80B20).



1708 Torcia					
		CLD PROG			LUMEN OUTPUT (tq= 25 °C)
wattage (240mA)	colour	weight	code	W tot	K - ølm 240mA - CRI
LED	grey 9007	7.40	423255-00	35	4000K - 4200lm - CRI>70
	graphite <td>423256-00</td>		423256-00		
Integrated ADVANCED PROG functions (see page XVI-XX).					

