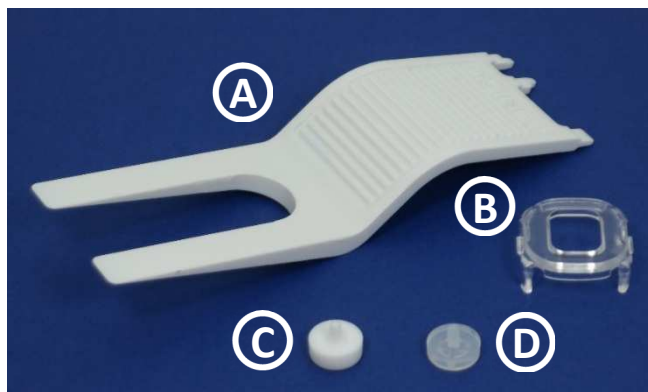


Adaptor kit for LEDsmart and RAPIX Push Buttons

This adaptor kit has been designed to adapt Diginet LEDsmart and RAPIX Push button Dimmers, Timers and Switches to suit Clipsal Saturn™ and Clipsal Saturn Zen™ wall plates.

(Clipsal Saturn™ and Clipsal Saturn Zen™ are products of Schneider Electric (Australia) Pty Ltd)

Kit contents



A – Bezel and Dial Removal Tool

B – Button Retaining Bezel

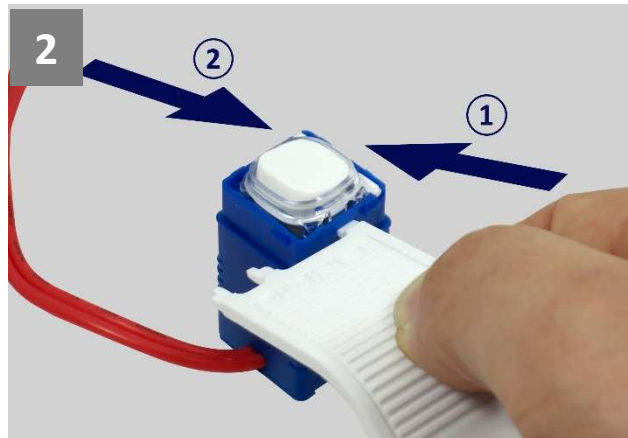
C – Button Adaptor (White)

D – Button Adaptor (Clear)

Installation



Use the Bezel and Dial Remove Tool (A) to engage with the slot on the side of the push button housing, as shown above.



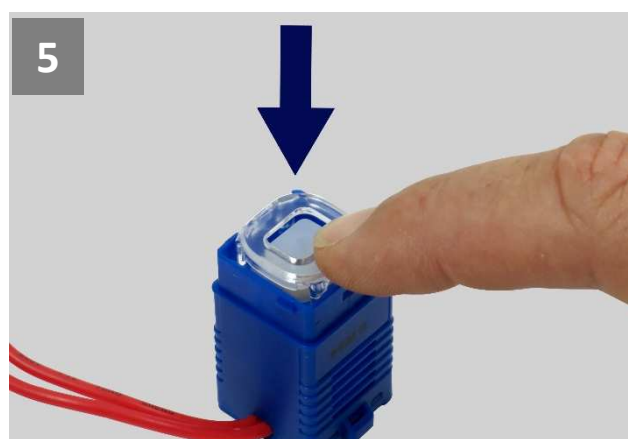
Push the tool into the slot until the clear bezel around the button releases from the housing. **Repeat** the process on the other side of the housing.



The clear bezel can now be lifted up to remove from the housing.



Rotate the button upwards and pull the button away from the housing.



Take a replacement Button Retaining Bezel (B) from the kit. Place the bezel into the housing, ensuring the four bezel legs line up with the bezel retaining holes in the housing. Push the bezel firmly into place



Take a Button Adaptor from the kit (C or D).

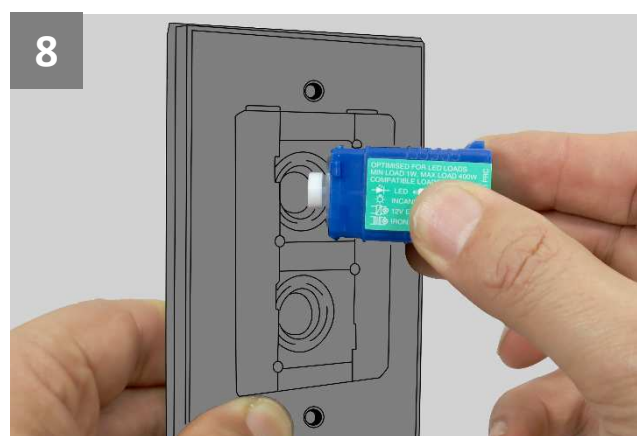
NOTE:

The **WHITE** button adaptor (C) is for a **Clipsal Saturn™** wall plate.
The **CLEAR** button adaptor (D) for a **Clipsal Saturn Zen™** wall plate.





7 Push the pin on the adaptor through the hole on the silicon button



8 The adapted LEDsmart or RAPIX unit can then be clipped into a wall plate

Gerard Lighting Pty Ltd reserves the right to alter the specifications, designs or other features of any items and to discontinue any items at any time without notice and without liability. While every effort is made to ensure that all information in this user and installation guide is correct, no warranty of accuracy is given and Diginet shall not be liable for any error.

© Copyright this installation guide is copyright to Gerard Lighting Pty Ltd. Except as permitted under relevant law, no part of this user and installation guide may be reproduced by any process without written permission of and acknowledgement to Gerard Lighting Pty Ltd.

Clipsal Saturn™ and Clipsal Saturn Zen™ are trademarks of Schneider Electric (Australia) Pty Ltd

DIGINET.NET.AU**Product of Gerard Lighting Pty Ltd**

ABN – 89 095 788 864

96-112 Gow Street

Padstow NSW 2211

Diginet is a brand of Gerard Lighting Pty Ltd

Contact

General Enquiries: 1300 95 DALI (3254) or sales@diginet.net.au

Technical Services: 1300 95 3244 or support@diginet.net.au

Fax: 1300 95 3257

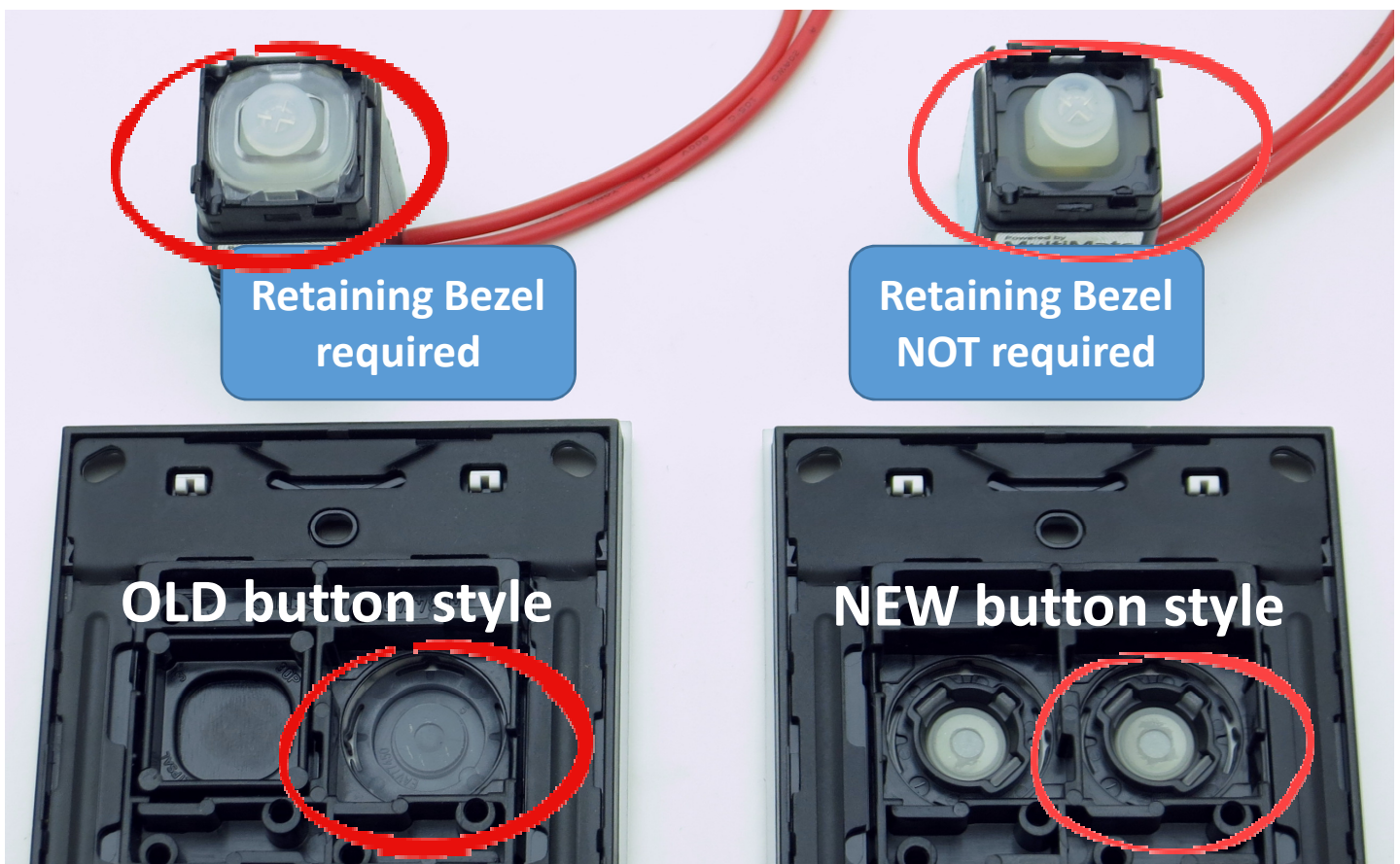
Adaptor kit for LEDsmart and RAPIX Push Buttons

Installation Guide Addendum

When using this Adaptor kit with Clipsal Saturn Zen™ wall plates, note that there are two different button designs used in Clipsal Saturn Zen™, as shown below.

The **OLD button design** requires both the Clear Button Adaptor and the Retaining Bezel supplied with this kit to be fitted (see the installation guide for more information).

The **NEW button design** does not require the Retaining Bezel, it only requires the Button Adaptor.



Clipsal Saturn Zen™ Wall Plates (rear)

Clipsal Saturn Zen™ is a trademark of Schneider Electric (Australia) Pty Ltd

© Copyright Gerard Lighting Pty Ltd 2018

Product of Gerard Lighting Pty Ltd

ABN – 89 095 788 864

96-112 Gow Street

Padstow NSW 2211

Diginet is a brand of Gerard Lighting Pty Ltd

Contact

General Enquiries: 1300 95 DALI (3254) or sales@diginet.net.au

Technical Services: 1300 95 3244 or support@diginet.net.au

Fax: 1300 95 3257