

D80 CLASSIFIED EMERGENCY LIGHT



PATHFINDER 2 LED EMERGENCY LIGHT COMPLETE WITH LITHIUM IRON PHOSPHATE BATTERY

An ideal replacement for conventional emergency luminaires
with maximum spacing requirements.



PATHFINDER 2 LED EMERGENCY LIGHT

COMPLETE WITH LITHIUM IRON PHOSPHATE BATTERY

FEATURES

- Compliant to AS/NZS 2293
- Recessed mount with an optional surface mount kit
- Available in white and black versions
- Replaceable Lithium Iron Phosphate (LiFePO₄) battery
- Flex and plug included for easy installation
- Polycarbonate enclosure
- DALI version available
- Manual test
- 4 years warranty including battery

BENEFITS

- Long life of 50,000 hours provides low maintenance costs
- High luminous efficacy to maximise spacing

SPECIFICATIONS

- Wattage: Maximum 6W
- Photometric Measurements: 470lm (emergency mode)
- Ingress Protection: IP20 rated
- Temperature ambience: Ta40°C
- Life: 50,000 hrs @ L70
- Weight: 0.3 Kg
- Materials: Polycarbonate
- Colour: White/Black
- Emergency Classification: D80
- Battery Specification:
 PFLED-RL2 & PFLED-RLBK2: LiFePO₄, 2 cell 6.4V 3300 mAh rechargeable battery pack.
 PFDLED-RL2 & PFDLED-RLBK2 : LiFePO₄, 3 cell 9.6V 1500 mAh rechargeable battery pack.

OPTIONAL ACCESSORIES

- Surface Mounted Kit (White): PFSKIT-L2
- Surface Mounted Kit (Black): PFSKIT-LBK2
- Vandal kit: FFLEDVK

REPLACEMENT BATTERY

- PFLED-RL2 & PFLED-RLBK2: BATPK3300/2L21
- PFDLED-RL2 & PFDLED-RLBK2 : BATPK1500/3L22

APPLICATIONS

All commercial and interior applications, apartments, shopping centers, hospitality, prisons and hospitals.



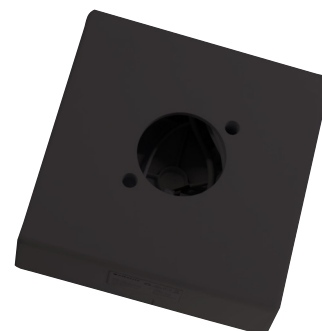
PFLED-RL2



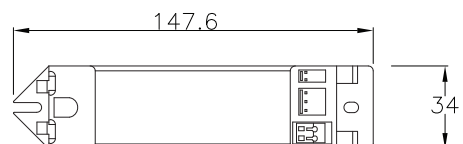
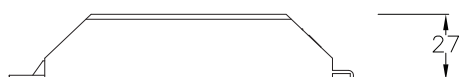
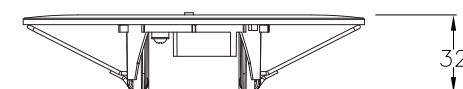
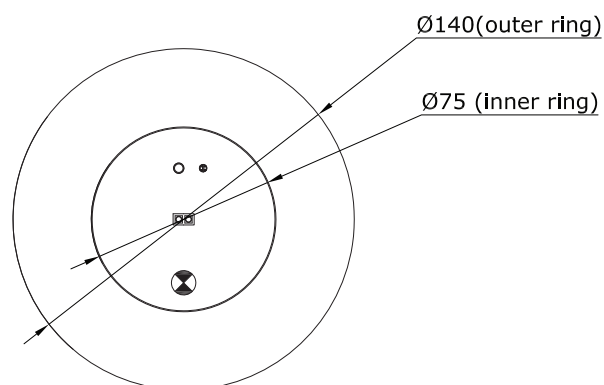
PFLED-RLBK2



PFSKIT-L2
(SURFACE MOUNT KIT)



PFSKIT-LBK2
(SURFACE MOUNT KIT)



PATHFINDER 2 LED EMERGENCY LIGHT

COMPLETE WITH LITHIUM IRON PHOSPHATE BATTERY

PFLED-RL2, PFLED-RLBK2: AS/NZS 2293.1:2018 CLASSIFICATION TABLE

ALLOWABLE LUMINAIRE MOUNTING HEIGHT (M)	LUMINAIRE MAXIMUM SPACING FOR EACH PLANE (M)		
	C0	C90/C270	C180
2.1	11.5	11.5	11.5
2.4	13.2	13.2	13.2
2.7	14.8	14.8	14.8
3	16.5	16.5	16.5
3.3	18.1	18.1	18.1
3.6	19.8	19.8	19.8
4	22	22	22
4.5	24.7	24.7	24.7
5	27.5	27.5	27.5
6	28.9	28.8	28.9
7	30	30	30
8	30.9	30.9	30.9
9	31.5	31.5	31.5
10	32.1	32.1	32.1
15	35.5	35.5	35.5
20	36.9	36.9	36.9

PRODUCT CODE	DESCRIPTION	WATTAGE (W)	DIMENSION (MM)	MASS (KG)
PFLED-RL2	Pathfinder 2 Recessed White	6 (Max)	Inner: ø75 x H 30 Outer: ø140 x H 30	0.3
PFLED-RLBK2	Pathfinder 2 Recessed Black	6 (Max)	Inner: ø75 x H 30 Outer: ø140 x H 30	0.3
PFSKIT-L2	Pathfinder 2 Surfacekit White			
PFSKIT-LBK2	Pathfinder 2 Surfacekit Black			
FFLEDVK	Recessed Vandal Kit			
BATPK3300/2L21	Battery replacement for PFLED-RL2 & PFLED-RLBK2			



*Rated LED design life where stated is based upon application of PIERLITE's operating and maintenance guidelines; see www.gerardlighting.com.au. Actual product life may vary dependent upon frequency of maintenance and product application. Due to continual product improvement, information is subject to change without notification. †Gerard Lighting Pty Ltd standard Terms and Conditions apply.



February 2019



D80 CLASSIFIED EMERGENCY LIGHT

4 YEAR
WARRANTY
EMERGENCY LIGHT
INCLUDING BATTERY

PATHFINDER 2 DALI LED EMERGENCY LIGHT COMPLETE WITH LITHIUM IRON PHOSPHATE BATTERY

An ideal replacement for conventional emergency luminaires
with maximum spacing requirements.



PATHFINDER 2 DALI LED EMERGENCY LIGHT

COMPLETE WITH LITHIUM IRON PHOSPHATE BATTERY

FEATURES

- Compliant to AS/NZS 2293
- Recessed mount with an optional surface mount kit
- Available in white and black versions
- Replaceable Lithium Iron Phosphate (LiFePO4) battery
- Flex and plug included for easy installation
- Polycarbonate enclosure
- Standard version available
- Manual test
- Function test (10 sec) with test switch press
- Self-test if not connected to DALI network with 'health' status reported by bicolour LED indicator
- 4 years warranty including battery

BENEFITS

- Long life of 50,000 hours provides low maintenance costs
- High luminous efficacy to maximise spacing

SPECIFICATIONS

- Wattage: Maximum 6W
- Photometric Measurements: 470lm (emergency mode)
- Ingress Protection: IP20 rated
- Temperature ambience: Ta40°C
- Life: 50,000 hrs @ L70
- Weight: 0.3 Kg
- Materials: Polycarbonate
- Colour: White/Black
- Emergency Classification: D80
- Battery Specification:
 PFLED-RL2 & PFLED-RLBK2: LiFePO4, 2 cell 6.4V 3300 mAh rechargeable battery pack.
 PFDLED-RL2 & PFDLED-RLBK2 : LiFePO4, 3 cell 9.6V 1500 mAh rechargeable battery pack.

OPTIONAL ACCESSORIES

- Surface Mounted Kit (White): PFSKIT-L2
- Surface Mounted Kit (Black): PFSKIT-LBK2
- Vandal kit: FFLEDVK

REPLACEMENT BATTERY

- PFDLED-RL2 & PFDLED-RLBK2 : BATPK1500/3L22

APPLICATIONS

All commercial and interior applications, apartments, shopping centers, hospitality, prisons and hospitals.



PFDLED-RL2



PFDLED-RLBK2



PFSKIT-L2
(SURFACE MOUNT KIT)



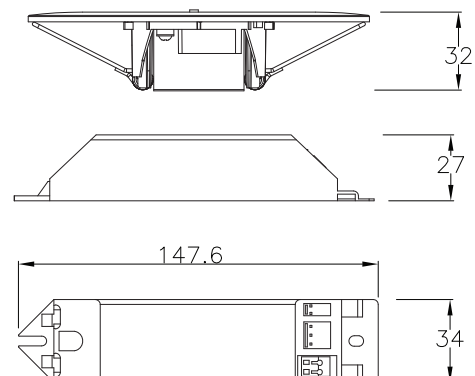
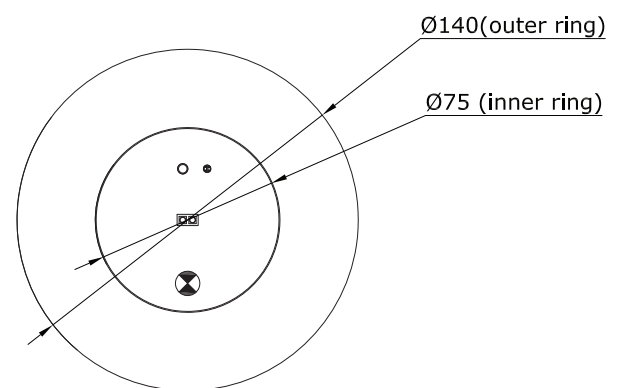
PFSKIT-LBK2
(SURFACE MOUNT KIT)



DALI CONNECTOR
INCLUDED



FFLEDVK
(VANDAL KIT)



PATHFINDER 2 DALI LED EMERGENCY LIGHT

COMPLETE WITH LITHIUM IRON PHOSPHATE BATTERY

PFDLED-RL2, PFDLED-RLBK2: AS/NZS 2293.1:2018 CLASSIFICATION TABLE

ALLOWABLE LUMINAIRE MOUNTING HEIGHT (M)	LUMINAIRE MAXIMUM SPACING FOR EACH PLANE (M)		
	C0	C90/C270	C180
2.1	11.5	11.5	11.5
2.4	13.2	13.2	13.2
2.7	14.8	14.8	14.8
3	16.5	16.5	16.5
3.3	18.1	18.1	18.1
3.6	19.8	19.8	19.8
4	22	22	22
4.5	24.7	24.7	24.7
5	27.5	27.5	27.5
6	28.9	28.8	28.9
7	30	30	30
8	30.9	30.9	30.9
9	31.5	31.5	31.5
10	32.1	32.1	32.1
15	35.5	35.5	35.5
20	36.9	36.9	36.9

PRODUCT CODE	DESCRIPTION	WATTAGE (W)	DIMENSION (MM)	MASS (KG)
PFDLED-RL2	Pathfinder 2 DALI Recessed White	6 (Max)	Inner: ø75 x H 30 Outer: ø140 x H 30	0.3
PFDLED-RLBK2	Pathfinder 2 DALI Recessed Black	6 (Max)	Inner: ø75 x H 30 Outer: ø140 x H 30	0.3
PFSKIT-L2	Pathfinder 2 Surfacekit White			
PFSKIT-LBK2	Pathfinder 2 Surfacekit Black			
FFLEDVK	Recessed Vandal Kit			
BATPK1500/3L22	Battery replacement for PFDLED-RL2 & PFDLED-RLBK2			



*Rated LED design life where stated is based upon application of PIERLITE's operating and maintenance guidelines; see www.gerardlighting.com.au. Actual product life may vary dependent upon frequency of maintenance and product application. Due to continual product improvement, information is subject to change without notification. †Gerard Lighting Pty Ltd standard Terms and Conditions apply.



February 2019