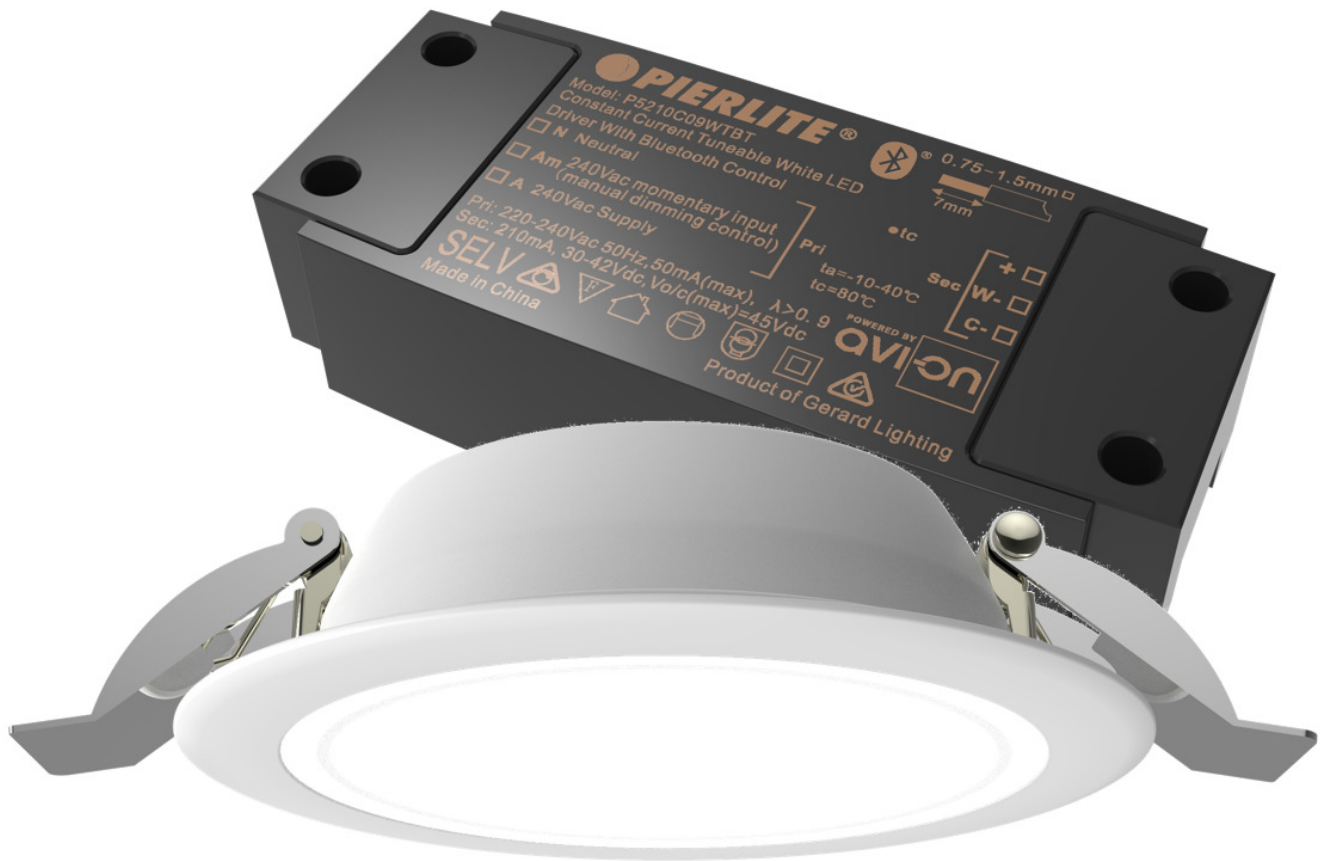


Pierlite Bluetooth® Downlight

Dimming, colour tuning, scheduling, group / scene control and remote access from a smart phone or tablet

Compatible with the Diginet 'Sitara' Lighting Control System



Introduction

Please read these installation instructions carefully before installing or maintaining this downlight. The product is designed for installation and maintenance in accordance with relevant Australian standards (AS3000) and local regulations (where applicable), by an authorised and licenced electrician.



The product must be maintained and operated in accordance with the manufacturer's instructions, failure to do so may damage the product and services. It is strongly recommended that this important note be communicated to the owner and or operator of the installation at the time of site commissioning. Good practice does not recommend the 24/7 use of products without the application of suitable switch cycle intervals. Furthermore, with the omission of nominated survival curves and or recommended operating hours, product design expectations provide for a continual daily usage of 6 hours for residential applications and a continual daily usage of 12 hours for commercial and industrial applications. All products must be thoroughly cleaned on a regular basis at intervals that reflect in the installation environment, ensuring the optical performance, together with the electrical, mechanical and structural integrity as designed, is maintained throughout the service life of the product.

There are no user serviceable parts inside this device. Do not attempt to disassemble or operate the device with any covers removed.

If you require information or assistance regarding the installation or operation of this product, please contact Gerard Lighting Technical Support.

Product summary

A high quality flush mounted, diffused, LED downlight with aluminium body. When connected to Bluetooth, this downlight can perform on/off, dimming, colour tuning, scheduling, group / scene control and remote access from a smart phone or tablet. The downlight can also be connected to a standard momentary (bell press) switch to allow on/off and dimming control from a wall switch as well as a smart phone or tablet - no dimmer required!

Product Features

- Colour Tuneable between 2700K and 6500K from a smart phone or tablet
- Scheduling/Grouping/Scenes from a smart phone or tablet
- On/Off/Dimming from both standard momentary wall switch and a smart phone or tablet
- IC-4 Compliant
- IP65 (from below)
- Bluetooth enabled driver
- Low profile (52mm) downlight head
- Aluminium construction
- Easy to install clips
- 90mm cut-out
- Complete with 1.2m flex and plug
- Lumen output: 800lm @ 6500K, 800lm @ 4000K, 750lm @ 2700K
- Over temperature protection
- Compatible with the *Diginet Sitara Lighting Control System*.

Application

The installation, application and orientation of the product is designed in accordance with the nominated product IP rating, class designation and these installation instructions. Installation environments and operating conditions beyond these instructions are not recommended.

Installation

Cut-out hole

The downlight requires a 90mm diameter hole for installation.

Installation requirements

This product is designed to allow solid form building insulation or 'matts' to abut the sides of the luminaire.

This product is designed to allow solid form building insulation or 'matts' to cover the top of luminaire and driver.

For maximum performance it is recommended not to cover the product with insulation.

This product can be dimmed via a smart phone or tablet using a Bluetooth connection and/or via a momentary switch wired to the driver or drivers (see pages 4 and 5). **A phase dimmer should not be used with this product.**

When mounting multiple fixtures to conductive structures, it is recommended that the structure is earthed.

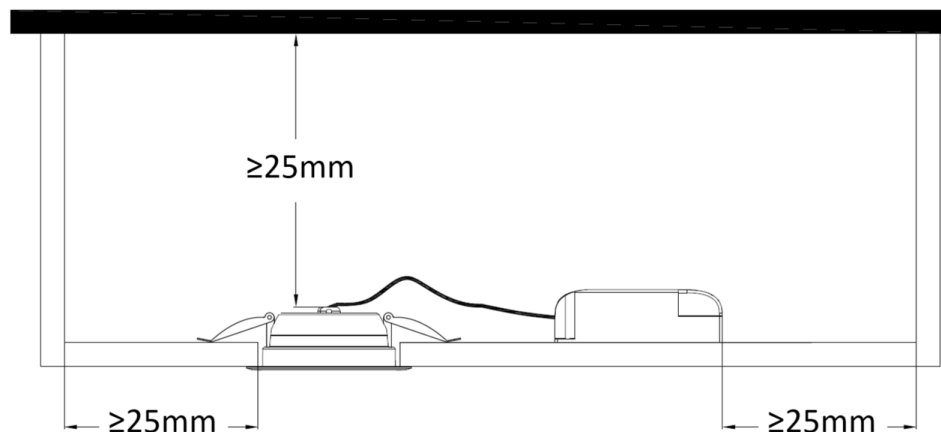
The driver mounting facilities only need be used if, in the application of the product, it is required by AS3000.

IP ratings stated are from below the ceiling unless stated otherwise. Installation of the product must be in a manner that maintains the integrity of the relevant IP rating



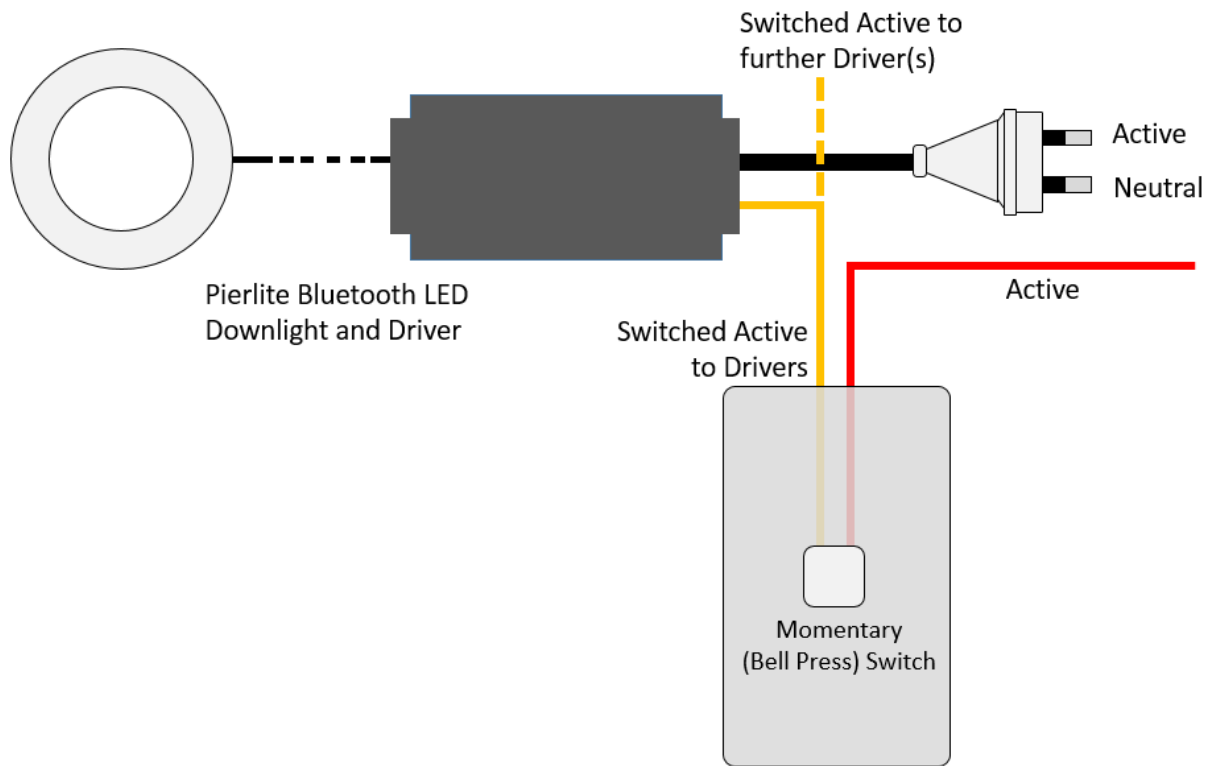
There is a risk of overheating or fire if the clearance distances nominated below are compromised.

Installation clearance to combustibile surface



Dimming control using a momentary switch

As well as smart phone or tablet control, an off-the-shelf momentary (or 'bell press') switch can be wired to a group of Pierlite Bluetooth Downlights to provide on/off and dimming control from a wall plate.



Any suitably rated momentary switch can be used. For example a Clipsal 30PBBP, Clipsal 30MBPR or Hager WBM15P.



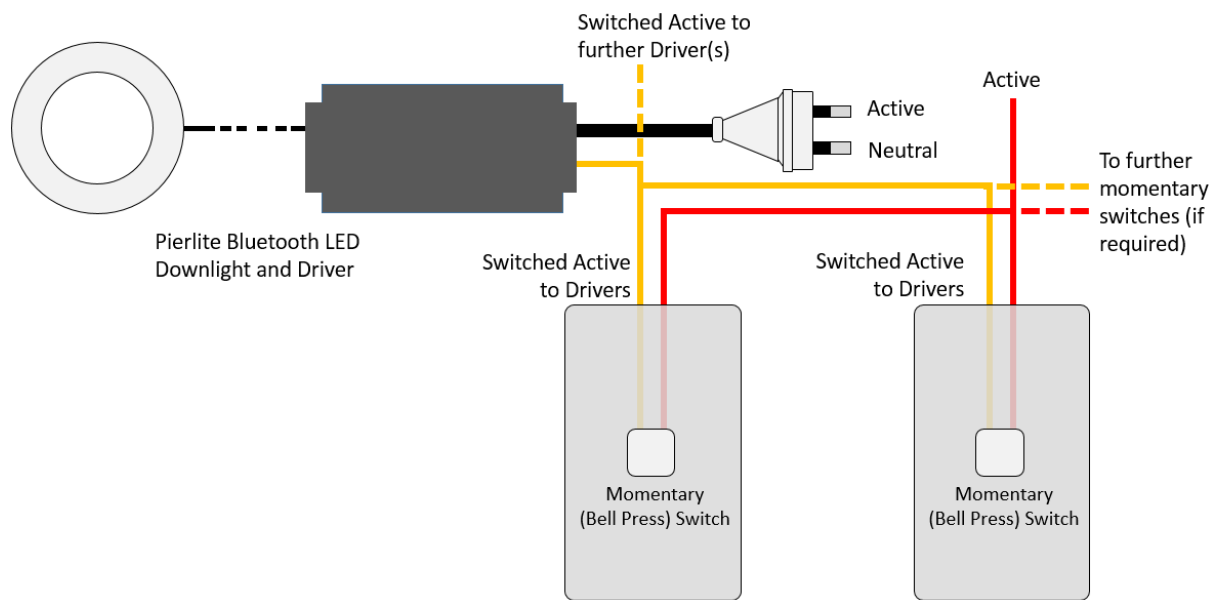
Phase control dimmers (leading edge, trailing edge, universal) are not required and are incompatible with this product. For wall switch dimming control, please use a momentary switch as described above.



The inclusion of a wall mounted push button switch is not mandatory. The device will still function via Bluetooth without the momentary switch.

Two-way (or multi-way) dimming control using momentary switches

To provide two-way or multi-way dimming, connect momentary switches in parallel between Active and the Switched Active to the driver(s), as shown below.



Any suitably rated momentary switches can be used. For example a Clipsal 30PBBP, Clipsal 30MBPR or Hager WBM15P.



Phase control dimmers (leading edge, trailing edge, universal) are not required and are incompatible with this product. For wall switch dimming control, please use a momentary switch as described above.



The inclusion of a wall mounted push button switch is not mandatory. The device will still function via Bluetooth without the momentary switch.

Connecting the downlight to Bluetooth®

The next two pages cover basic information on how to register the Pierlite Bluetooth Downlight and connect it to a suitable Bluetooth enabled smart phone or tablet. If further information is required, please refer to the on-line information at support.avi-on.com

Initial preparation

An internet connection (via either Wi-Fi or phone data) is needed to initially setup the Pierlite Bluetooth Downlight. After setup, the downlight will operate with Bluetooth and without an internet connection.

Before attempting to connect the Pierlite Bluetooth Downlight to a smart phone or tablet:-

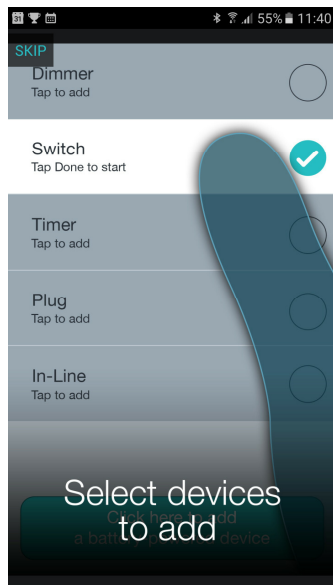
- Ensure Bluetooth on the smart phone or tablet is switched ON
- Ensure that you are within 10m range of the Pierlite Bluetooth Downlight being set up
- Ensure that the downlight is connected to mains (see page 4)
- Download and install the free Avi-on™ App. The App is freely available on the Apple App Store and Google Play Store. Search for 'Avi-on' (note the hyphen in 'Avi-on').

Logging into the App

- Open the Avi-on App on the smart phone or tablet
- Create an Avi-on account when prompted
- Log into the account.

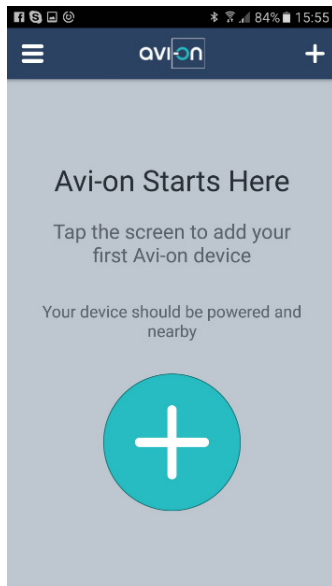
Connecting the Avi-on App to the Pierlite Bluetooth® Downlight

When logged in for the first time, you will see the following screen. At this point, you can take a tour of the App by 'swiping right' on the screen. To start adding devices, press the 'Skip' button (Android) or 'Dismiss' button (iOS).



The App screens shown in this guide are from the Android App. Screens will vary slightly on iOS devices. There may also be some variation depending on the Android/iOS App version used.

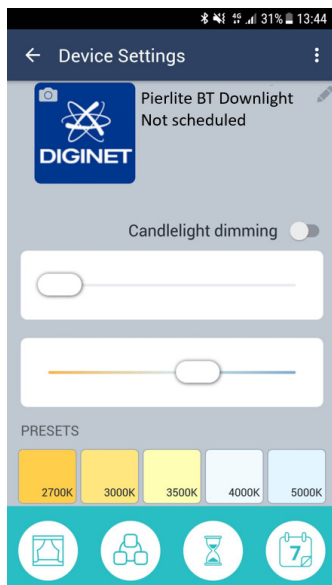
When prompted at the screen below, tap the large '+' button



The App will find all unclaimed devices in range. Choose the device to claim and tap 'Done'. You will then see the App registering the device.

The device is now 'Claimed', i.e. it is registered to your account and only smart phones or tablets logged into this account can view and control the device.

When claimed, you will automatically be taken to a screen where you can control the device. From this screen you can also edit the device name, the device picture, schedules, timers, groups and scenes.



Standards and compliance

The RCM marking of this product applies to AS/NZS CISPR15 (EMC) “Limits and methods of measurement of radio disturbance characteristics of electrical lighting and similar equipment”. This product is designed to conform to AS/NZS60598 “Luminaires, general requirements and tests”.

Product specifications

Product brand	Pierlite
Type of Protection	Class II Luminaire
IP Rating - for interior products, the IP rating nominated is “from below the ceiling” unless specifically nominated	IP20 from above, IP65 from below
Nominal design Voltage	240V
Circuit wattage	9W
Secondary current	210mA
Inrush current @ 240Vac	2.5A/96µS
Important – when installing any LED lighting equipment, the installer must consider the in-rush start current	
Secondary Voltage	30-42Vdc
Maximum Secondary Open Circuit Voltage	45Vdc
Power factor	>0.9
Nominal Freq. (Hz)	- 50 Hz
Rated Minimum / Maximum Ambient Temperature	-10°C / +40°C
Suitable for direct mounting on flammable surfaces	YES
Dimmable (if relevant refer brand web for approved list)	YES
Installation orientation	Ceiling Recessed
Designed application	Residential and apartment interior spaces
Rated average design life	35,000hrs
IC Classification AS/NZS 60598.2.2-2016	IC-4
CRI	>80
CCT	2700K to 6500K (variable by user)
Beam angle	100°
Lumen output	800lm @ 6500K 800lm @ 4000K 750lm @ 2700K



Bluetooth® Specifications

Protocol	Bluetooth with Mesh
Wireless Range	~30m typical indoor range (See important note below)
Wireless Frequency	2402MHz - 2480MHz
Security	128-bit AES with Counter Mode CBC-MAC and application layer user defined
Robustness	Adaptive frequency hopping, Lazy Acknowledgement, 24-bit CRC, 32-bit Message Integrity Check



The Bluetooth range achieved will vary depending on specific application factors, such as the building construction, unit location, location of unit relative to others and the total number of units installed

Smart phone or tablet Requirements

- Apple smart phone or tablet running operating system iOS 10 or later
- Android smart phone or tablet running operating system 4.4.2 or later
- Bluetooth 4.0 or higher.

Dimensions

Downlight

Overall diameter	105mm
Depth (with cable)	52mm
Cut-out diameter	90mm

Driver

Length	130mm
Width	55mm
Height	22mm

Storage

Prior to installation, products are to be stored in cool and dry conditions.

Warranty

Warranty Instructions

For the purpose of warranty claims (if any) the following instructions apply

Warranty components – THE PRODUCT, (identified as the THE PRODUCT only). Warranty period - The above components are provided with a warranty of THREE (3) year/s or 15,000 hours of operation (which ever arrives first) against manufacturing defects or failure to perform to specifications for products installed by an authorised installer in accordance with the manufacturer’s installation instructions and which have not been subject to incorrect operation or maintenance, unauthorised modification or damage arising from any intervening cause. Warranty reference - The warranty reference date commences from the date of purchase. Warranty point of contact – Gerard Lighting Pty Ltd, 96 Gow Street Padstow NSW 2211, phone T 02 9794 9300 contact – Gerard Lighting After Sales Support.

Warranty claim procedure

For the purpose of making a claim the customer must:

1. Contact the “point of contact” above and upon provision of proof of purchase the customer will receive a goods return advice (GRA) number.
2. At the customer’s expense, collect and return the goods to the “point of contact” with the issued GRA number.
3. Upon receipt of the goods, Gerard Lighting will review the claim and if found to be accepted, Gerard Lighting will return a replacement product to the customer to install at the customer’s expense. Alternatively if the claim is rejected, the customer may request the return of the goods at their expense.

Consumer Contracts

The benefits to the customer given by the Gerard Lighting warranty are in addition to other rights and remedies of the customer if the goods are the subject of a Consumer Contract under the Australian Consumer Law. In that event the following statement is required to be brought to the Consumer’s attention:-

Our goods come with guarantees that cannot be excluded under the Australian Consumer Law. You are entitled to a replacement or refund for a major failure and for compensation for any other reasonably foreseeable loss or damage. You are also entitled to have the goods repaired or replaced if the goods fail to be of acceptable quality and the failure does not amount to a major failure.

Limitation of Liability

If the goods are not purchased by the customer under a Consumer Contract within the Australian Consumer Law then but not otherwise:-

- (a) the Company is not liable in tort for any loss or damage suffered by the customer or by any third party; and
- (b) in no circumstances is Gerard Lighting liable to the customer or to any third party for any loss of profits, loss of anticipated savings, economic loss or interruption of business or for any indirect or consequential loss (Consequential Loss). Terms of Sale – these Warranty provisions are in substitution for any inconsistent provisions in the Gerard Lighting Terms and Conditions of Sale in so far as they apply to the Warranty components.

The page is intentionally blank

The installation instructions were correct at the time of print. To reflect changes in technology and Australian standards; Gerard lighting reserves the right to amend the instructions without notice. Updated guidelines can be found on the relevant brand web site. The identified trademarks and copyrights are the property of Gerard Lighting unless otherwise noted

Pierlite is a brand of Gerard Lighting

Avi-on is trademark of Avi-on Labs, Inc.

The Bluetooth word, mark and logos are registered trademarks owned by Bluetooth SIG, Inc.

Apple and iPhone are registered trademarks of Apple Inc.

iOS is a trademark or registered trademark of Cisco

Android is a trademark of Google, Inc.

© Copyright

This user and installation guide is copyright to Gerard Lighting. Except as permitted under relevant law, no part of this user and installation guide may be reproduced by any process without written permission of and acknowledgement to Gerard Lighting

December 2017

Product of Gerard Lighting Pty Ltd

ABN – 89 095 788 864

96-112 Gow Street

Padstow NSW 2211

Telephone: 02 9794 9300