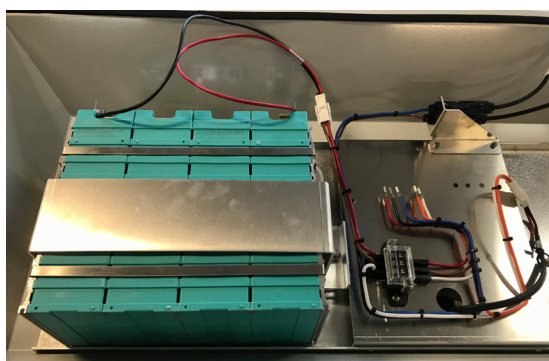
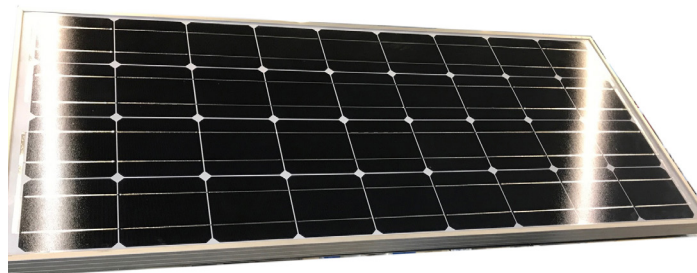


**SYLVANIA**

# Solar StreetLED

Integrated Solar Streetlight Solution



## DESCRIPTION

The Solar StreetLED Integrated Solar Streetlight solution features highly efficient 100W solar cells powering a 14W Sylvania StreetLED luminaire. Power storage is via equally high efficiency Li-ION batteries which are discretely concealed within the back of the solar cell. As such, issues such as tampering are limited and the need for external control boxes removed.

The Solar StreetLED offers 4 days autonomy ensuring that light performance is maintained during periods of overcast weather.

The StreetLED has proved to be a reliable and efficient luminaire that features all the benefits of Australian design and engineering with a long-life LED module, self-cleaning visor (SCO version), tamper proof clips and easy access in the event that maintenance is ever required.

## PERFORMANCE SUMMARY

- 100W Solar panel.
- 20° tilt angle for panel.
- 1.5mtr outreach arm
- LED design life of 88,000 hours @ L90 (Luminaire).
- 40°C ambient operating temperature.
- Controllable light distribution available with use of glare control visors
- Self cleaning visor as standard visor, Aeroscreen visor also available
- Mounting: spigot mount for luminaire, system mounts on top of standard 100mm NB pole
- 4000K standard colour temperature
- Can be safely used up to Wind Region C @ 4.5mtr mounting height

\* Luminaire only

## SPECIFICATIONS

### Electrical Characteristics: StreetLED Luminaire:

- Input Voltage: 12V
- System watts: 17W

### Lighting Technical Characteristics: StreetLED Luminaire

- CCT: 4000K
- CRI: > 70
- Optical chamber sealed to IP66
- 88 000 hours LED lamp life @L90
- 2100 lumen output at initial

### Mechanical Characteristics:

- All-in-one - Solar panel, long life battery and controller. No need for inverter
- Luminaire body made from die-cast aluminium
- Weight: ~ 19kgs Panel including bracket
- Weight of luminaire: 5kgs nom.
- Luminaire and solar panel powdercoated RAL 9006 grey

### Solar Panel

- 100W
- Hi efficiency Monocrystalline panel
- Aluminium body
- Sealed to IP65

### Battery

- 100AmpH. LiPo (4x 3.2v cells). Fitted with Battery Management Systems (BMS)
- Stainless steel strapping
- Brass terminal posts
- Strong polycarbonate cover
- Autonomy: 4 days

### Control Characteristics:

- Victron MPPT 75/10
- 12V DC nominal voltage
- No inverter

### Environmental & Standards:

- Ambient Operating Temps: to 40° C

## PHOTOMETRY

Please contact your Roadway & Infrastructure Lighting representative for photometric information specific to your project.

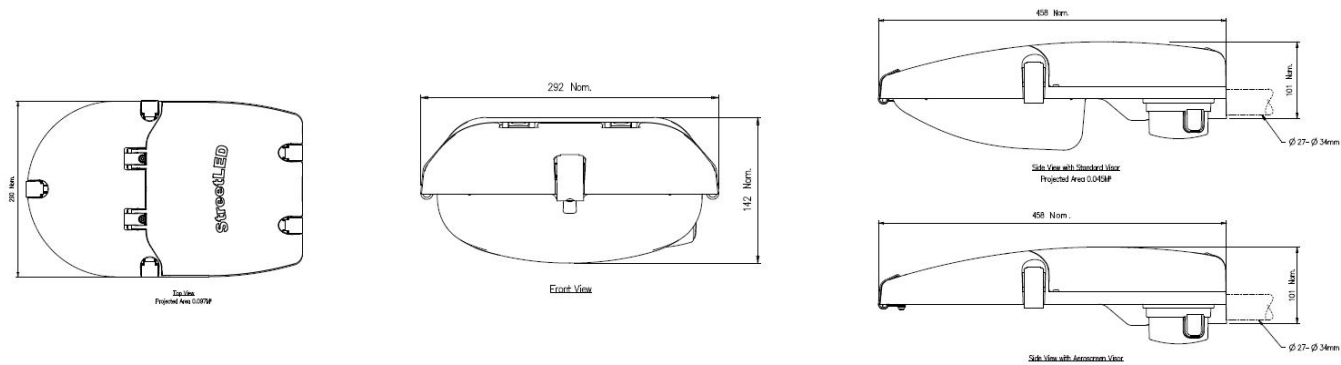
ORDER CODES

Order Code	Description	Wattage	CCT	Lumen
JLB99Z60L17SOL	STREETLED2 14W 4K 12V SOLAR COMPLETE WITH PANEL AND OUTREACH BRACKET KIT	17W	4000K	2100
JLB99Z62L17SOL	STREETLED2 14W 4K 12V SOLAR COMPLETE WITH PANEL KIT EXCLUDING BRACKET	17W	4000K	2100

Note: The above codes are for standard products only. Please refer to your local representative for more options.

DIMENSIONS

StreetLEd Luminaire



Solar Panel

