

**INTRODUCTION**

Designed in Australia, this electronic timer will automatically switch lighting off after the timeout period programmed into the device by the installer.

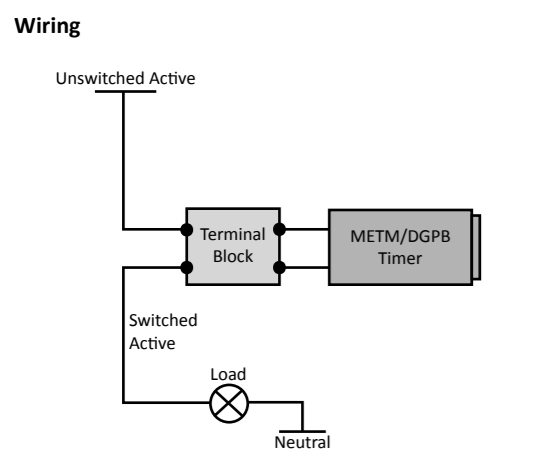
As part of the LEDsmart™ range, this timer enables dimmers, switches and timers to be combined onto the same wall plate, providing the user with a consistent interface.

**FEATURES**

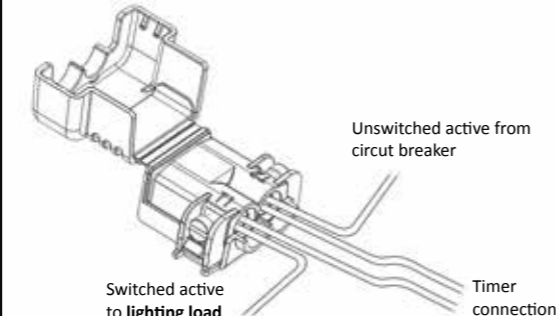
- Programmable between 1 minute and 30 minutes, in 1 minute steps
- Override feature to stop the lights turning off automatically
- Advanced 'warning' feature to dim lighting to 50% level for 5 minutes after time out
- Mode to convert from Short Interval timer to Long Interval timer.
- Programmable maximum level and off state indicator
- Simple 3-step timer interval setting
- White LED, illuminated bezel
- Flush and rocker style button options
- Quiet, soft press button – no harsh click
- Settable off-state indicator
- 1W minimum load
- Terminal block included for AS3000 compliance
- Easy-fit terminal block

**WIRING DIAGRAMS**

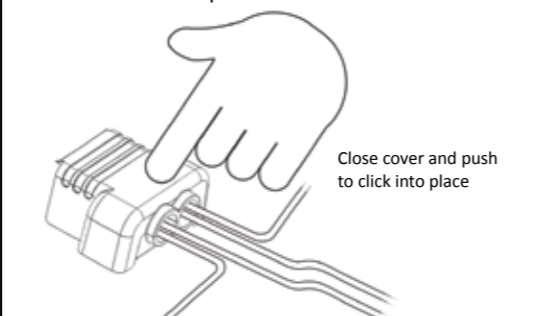
**STOP**  
 This product must be installed by a suitably qualified installer who must work in accordance with standard safety procedures for mains-powered electrical equipment.



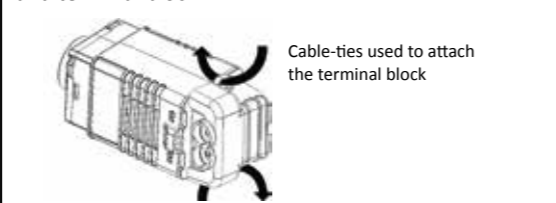
The terminal block included with the timer should be used to carry out the electrical connections, as shown below.



Once the connections have been made, the terminal cover should be snapped closed to ensure the screw terminals are not exposed.



The terminal block can then be cable-tied to the rear of the timer housing utilising the loop holes on the case and terminal block.



**TURNING THE TIMER ON/OFF**

Tap the push button to turn the load on and start the timer. The timer allows a duration of 1 to 30 minutes in increments of 1 minute. Out of the box (and factory defaults), the minutes timer is set to 15 minutes. When the load is on, tap to turn the load OFF.

**TIMER INDICATOR**

When a timer is running, the indicator will blink to off every 2 seconds. When the timer is 5 minutes or less from timing out, the indicator blinks once a second.

**TIMER OVERRIDE**

To turn the lights on and override the timer, press and hold the push button for ½ second or more. The lights will turn on, but the timer function is overridden and the lights will stay on until they are manually turned off. This can be done when the lights are OFF or ON. In both cases the load is set ON and the timer function is cancelled.

**ADVANCED TIMER**

The advanced timer feature provides an advanced warning to the user that the lights will shortly turn off automatically.

When the advanced timer is enabled, at time out the lights are dimmed to 50% over a 4 second period and are held at this 50% level for 5 minutes. After this 5 minutes, the lights are turned off automatically.

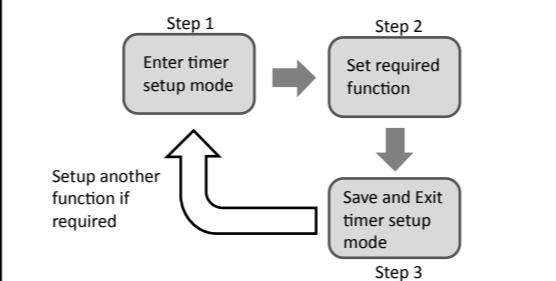
- During this 5 minute period:-
- The indicator blinks will blink at a faster rate
  - A tap of the push button will restore the load to 100% ON and the timer will restart
  - A long press of the push button will turn the load OFF.

The advanced timer mode can be selected in setup Part D.

**TIMER SETUP**

The timer has a number of useful functions which can easily be set by entering setup mode and following the easy steps in this guide.

All setup functions follow the same simple 3-step procedure, as shown in the diagram below.



**TIMER SETUP FUNCTIONS**

All setup functions are covered in this Installation Guide. See below for the relevant part of the guide.

Function	See Part
Entering <b>Setup Mode</b>	A
Setting <b>Timeout Period</b>	B
Setting <b>Maximum Brightness</b>	C
Setting <b>Advanced Features</b>	D
Setting <b>Off State LED</b> feature	E
Converting from <b>Minute to Hour Timer</b>	F
Factory Defaults <b>Reset</b>	G

**i** Once in Setup Mode, options are selected by a series of 'clicks' of the push button. Each 'click' should be approximately 1 second after the previous click.

**A ENTERING SETUP MODE**

If the timer has been powered up for **LESS THAN 30 MINUTES** see **A1** below.

If the timer has been powered up for **MORE THAN 30 MINUTES** see **A2** below.

**A-1** Timer has been powered up via mains 240Vac for **LESS THAN 30 MINUTES**

1. Push and hold the button for **10 seconds**  
*Note: connected lights will turn on or off, this is normal*
2. The white LED Indicators will blink ON/OFF with 1 second intervals. This indicates that **the timer is now in Setup Mode**
3. The timer is ready for the settings to be adjusted as required. Go to the relevant setup function instructions

**A-2** Timer has been powered up via mains 240Vac for **MORE THAN 30 MINUTES**

1. Push and hold the button for **30 seconds**  
*Note: This resets the Setup Entry time back to 10 seconds (for the next 30 minutes)*  
*Note: Connected lights will dim up or down, this is normal*
2. The white LED Indicators will blink ON/OFF with 1 second intervals. This indicates that **the timer is now in Setup Mode**
3. The timer is ready for the settings to be adjusted as required. Go to the relevant setup function instructions

**B SETTING TIME OUT INTERVAL**

The Minutes timer allows a duration of 1 to 30 minutes in increments of 1 minute. Out of the box (factory defaults), the time out interval is set to 15 minutes. To change the time out interval from the default 15 minutes, follow the steps below.

1. Enter into the timer **Setup Mode** – See **PART A**
  2. Click the push button **2 times**  
*Note: To cancel/exit do nothing for 10 seconds*
  3. The LED Indicator will **blink 2 times**
  4. To set the time out interval, push and hold the button and count the number of blinks. **Each blink of the indicator adds 1 minute to the minute timer.**
  5. When the number of blinks counted equals the number of minutes required, **release** the button.
- The time out interval is saved and setup will exit automatically.

**Note**

- The indicator will blink when the timer is turned on to indicate it is in time out mode.
- Trying to select a time interval of 0 will result in setting 1 minute

Please turn over for **Setup PARTS C to G** and **Timer Specifications**

This product is covered by a two-year warranty against manufacturing defects. This warranty is provided in addition to consumer guarantees covered by Australian Consumer Law.

## C SETTING MAXIMUM BRIGHTNESS

The maximum brightness level provided by the timer can be set to suit customer requirements.

Note that when lamps are near to full brightness, it is difficult to see changes in dimming level. Therefore, when setting up maximum brightness, it is recommended that the lamp is slowly dimmed up to a point where no further changes in brightness can be seen, and the maximum level set at this point.

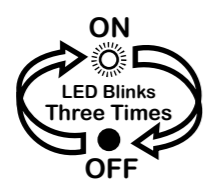
1. Enter into the timer **Setup Mode** - See **PART A**



2. Click the push button **3 times**



3. The LED indicator will **blink 3 times**



*Note: To cancel/exit do nothing for 10 seconds*

4. Push the button to achieve the required maximum brightness level



*Note: To cancel/exit do nothing for 10 seconds*

5. Click once to save & exit



## D SETTING ADVANCED TIMER MODE

The advanced timer mode provides an optional advanced warning to the user that the lights will shortly turn off automatically.

When the advance timer is enabled, at time out the lights are dimmed to 50% over a 4 second period and are held at this 50% level for 5 minutes. After this 5 minutes, the lights are turned off automatically.

By default, Advanced Timer Mode is **disabled**.

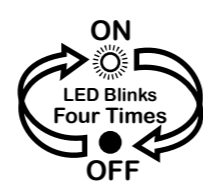
1. Enter into the timer **Setup Mode** - See **PART A**



2. Click the push button **4 times**



3. The LED Indicator will **blink 4 times**



*Note: To cancel/exit do nothing for 10 seconds*

4. **To enable the advanced timer mode**  
Push and hold the button until the lamps(s) turn ON



**To disable the advanced timer mode**  
Push and hold the button until the lamps(s) turn OFF (default)

5. Click once to save and exit



Note that during this 5 minute warning period:-

- The LED indicators will blink at a faster rate
- A tap of the push button will restore the load to 100% ON and the timer will restart
- A long press of the push button will turn the load OFF.

## E SETTING OFF STATE INDICATION

When the timer is switched off, the white LED indicators in the timer can be set to glow or turn off.

By Default, the white LED indicators are set to glow when the timer is turned off.

To set the LED indicators to turn off when the timer is off, follow the steps below.

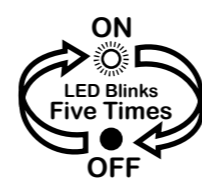
1. Enter into the timer **Setup Mode** - See **PART A**



2. Click the push button **5 times**



3. The LED indicator will **blink 5 times**



*Note: To cancel/exit do nothing for 10 seconds*

4. **To set Indicator to glow on when timer is off**  
Push the button until the lamp(s) turns ON



**To set Indicator to turn off when timer is off**  
Push the button until the lamp(s) turns OFF

5. Click once to save & exit



## F CONVERT MINUTE TO HOUR TIMER

If required, this minute timer can be converted to a standard LEDsmart hour timer, with a time out settable between ¼ hour and 7½ hours, in ¼ hour increments.

To convert to a hour timer, follow the steps below.

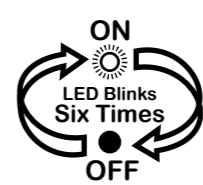
1. Enter into the timer **Setup Mode** - See **PART A**



2. Click the push button **6 times**



3. The LED indicator will **blink 6 times**



*Note: To cancel/exit do nothing for 10 seconds*

4. **To enable hour timer mode**  
Push and hold the button until the lamps(s) turn OFF



**To disable hour timer mode**  
(Set minute timer mode)  
Push and hold the button until the lamps(s) turn ON (default)

5. Click once to save & exit



## G RESETTING TO FACTORY DEFAULTS

1. Enter into the timer **Setup Mode** - See **PART A**



2. Click the push button **10 times**



3. The timer will automatically exit Setup Mode once reset

### SPECIFICATIONS

Nominal Line Voltage	220-240Vac
Line Voltage Frequency	50Hz Nominal (47 – 53Hz)
Default time out	15 minutes
Rated Load	Refer Compatible Loads
Minimum Load	1W

### COMPATIBLE LOAD TYPES

Load Symbol	Load Type	Max. Load	Notes
	Dimmable LED Lamps	400W	The LED driver must be dimmable. Maximum permitted number of drivers is 400W divided by driver nameplate power rating. Due to variety of LED lamp designs, maximum number of LED lamps is also dependent on power-factor result when connected to timer
	Electronic Transformers	400W	
	Standard iron-core transformers	250W	Due to variety of transformer designs, max LV lighting load is also dependent on transformer efficiency
	Toroidal iron-core transformers	300W	
	Incandescent	350W	
	Dimmable CFLs	400W	Due to the variety of CFL designs, the maximum number is make/model dependent

### INCOMPATIBLE LOAD TYPES

Ceiling Sweep Fans and Exhaust fans

### MULTI-GANG DE-RATING

In applications where multiple timers are installed in a multi-gang plate, a de-rating factor is applied to the maximum load as follows

Number of timer per plate	De-rating factor
1	No de-rating
2	0.85
3	0.7
4	0.55
5	0.4
6	0.25

**De-rating Example**  
Two timers (and associated switches) installed in a wall plate. The maximum LED load which can be connected to each timer = 400W x 0.85 = 340W per timer