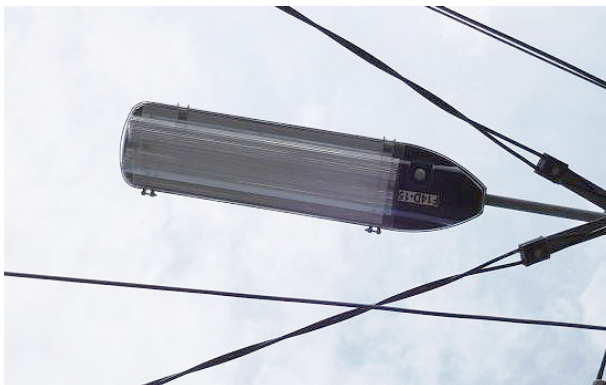




## DESCRIPTION

The Greenstreet LED Roadway luminaire utilises innovative, energy saving LED technology combined with a highly efficient optical system to deliver a fixture capable of delivering high colour rendering while withstanding the tough Australian conditions.

The Pierlite Greenstreet LED features a die-cast aluminium body with an acrylic profile lens retained with stainless steel clips. Integral electronic control gear and LED lamp system with IP65 protection makes the Greenstreet LED perfect for public roadlighting, footpaths, cycleways, carparks, marinas, industrial and civic areas.



## PERFORMANCE SUMMARY

- Smooth refractor lens system in UV-stabilised acrylic
- High colour rendering LED system provides a visually safe environment
- Precision pressure die-cast aluminium housing with durable powder coat paint finish
- The gear & optical chamber is isolated from the connection box for optimum performance
- Four heavy duty stainless steel clips provide positive lens closure
- Standard body colour, powder coat RAL 830I (Grey);
- Continuous silicone gasket around the lens provides secure IP65 weather protection for the optical chamber
- IP24 for the cable termination
- Suits dia. 34mm x 80mm long spigot mount
- 3 year warranty

## Info Section

### SPECIFICATIONS

#### Electrical Characteristics:

- Input Voltage: 216-260V – 50/60Hz
- Power Factor: > 0.9
- System watts: 26W

#### Optical Characteristics:

- UV stabilised acrylic visor
- CCT: 4000K standard
- CRI: > 70

#### Mechanical Characteristics:

- Powder coat Precision pressure die-cast aluminium body (marine grade)
- Weight: 4.0kg
- IP66 optical chamber
- Easy to replace visor hinged with quick access clips
- Suits 34mm x 80mm long spigot mount
- Hinged driver compartment cover with quick access clips.

#### Control Characteristics:

- IP24 connection protection for the cable termination

#### Environmental & Standards:

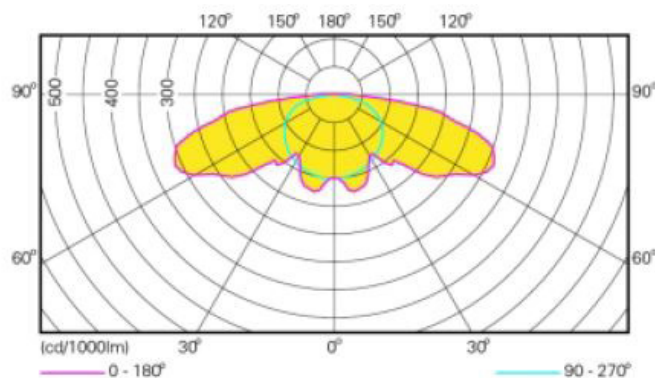
- Ambient Operation Temps: - 10° C to 40° C
- Operating Humidity Range: 10% - 95% Relative humidity
- IK 08 Impact rating
- EMC compliant

#### Options

- a variety of RAL colours are available as an option

### PHOTOMETRY

Please contact your Roadway & Infrastructure Lighting representative for photometric information specific to your project.



## ORDER CODES

Order Code	Description	Dimensions (l x w x d mm)	Weight
GSLED26B	Greenstreet 26W LED	768 x 199	4kg
GSLED26P	Greenstreet 26W LED PE Cell	768 x 199	4kg

## DIMENSIONS

