

Concord

FEELUX

DC FLX Collection **2015**



GERARD
LIGHTING



FEELUX



More Slim !

FEELED **FLX Stix** NDV series



Round diffuser / Square diffuser_ Spot free LED

Change your Light, Change your Life!

LED for Display, Cabinet, Furniture & Cove



MonoRail HO
Magnetic Power Track LED Linear Lighting

06

MonoRail
Display & Cove system for long runs!

10

MonoRail Spot
Slide and Swivel Mini LED Spotlight

18

FLX Stix NDV
Little light, Big punch!

26

FLX Stix HDV
Little light, Bigger punch!

32

FLX Stix DDV
Dynamic white LED

38

FLX Stix RDV
Color changing LED

46

FLX Spot DVS
Super Slim LED Recessed Spotlight

54

FLX Spot DVS Swivel
Super Slim Swivel LED Spotlight

58



*Display & Cove system for
long runs!*

MonoRail/MonoRail HO

FEELUX



MonoRail HO

LED for Display, Cabinet, Furniture & Cove

Magnetic Power Track LED Linear Lighting



Product Features

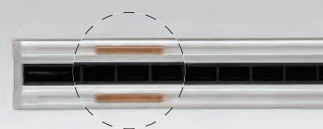
- High output linear lighting with magnetic power track
- Power is supplied through magnet
- Stronger magnet, better adhesion
- To be used with constant voltage DC 24V driver
- Dimmable with available accessories

Specification

- Voltage : DC 24V
- Operating temperature : 0~45° C
- Lamp life : 50,000hr / 70%
- Available color : 2700K, 3000K, 3500K, 4000K, 6000K
- Color rendering : Ra > 85
- Energy efficiency : 100lm/W
- Degree of protection : IP20



Powered through magnet



MonoRail HO

Magnetic Power Track LED Linear Lighting



MonoRail HO 3W Length (139.2mm)



MonoRail HO 5W Length (273.7mm)



MonoRail HO (Power supply track)

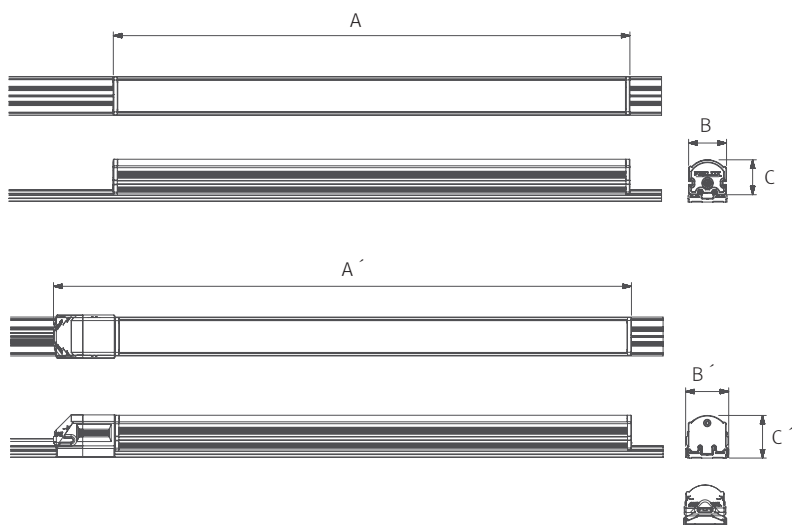
Max. connection

– LED Driver

LED Driver Model Name	Max. units for LED Driver	
	24V/75W	24V/200W
MNH3 40K-24V	30	80
MNH5 40K-24V	15	40

Dimension

Fixture



Model name	Power Input (V)	Lamp Power(W)	A(mm)	A' (mm)	B(mm)	B' (mm)	C(mm)	C' (mm)
MNH3 40K-24V	DC24	2.5	139.2	171.7	20.1	22.8	18.5	22.6
MNH5 40K-24V	DC24	5	273.7	306.2	20.1	22.8	18.5	22.6

Accessories



(a) Power Rail (Power supply track) : MNH-Rail (1.2m)



(b) Power supply cable to the Rail

MNHPC : 2500mm



(c) LED Driver with 6way distributor

Part No	FLC15-24V/T	FLC30-24V/T	FLC75-24V/T
Capacity	15W 24V	30W 24V	75W 24V



(d) LED Driver : FLC200-24V/T (200W 24V)



(e) Dimming Interface (1-10V)

FDC-V10 (Max.48W)

FDC-L10 (Max.100W)



(f) Dimming Interface(0-10/1-10,DMX512)

FDA-L2M0 (200W)

FDA-L5M (200W)



(g) Door and motion detection sensor (DC) : FLS-M24V



(h) Human-body detection sensor (DC) : FLS-P24V



(i) End cap

MNH-CAP

FEELUX

MonoRail

LED for Display, Cabinet, Furniture & Cove

Display & Cove system for long runs!





Product Features

- Super Slim linear with power track
- Greatly extends the length of a run with a single power point
- Fixtures snaps onto power track with no breaks in light output
- To be used with constant voltage DC 24V driver
- Dimmable with available accessories

Specification

- Voltage : DC 24V
- Operating temperature : 0~45° C
- Lamp life : 40,000hr / 70%
- Available color : 2700K, 3000K, 3500K, 4000K, 6000K
- Color rendering : Ra > 85
- Energy efficiency : 75lm/W
- Degree of protection : IP20





MonoRail

Display & Cove System for Long runs!



MonoRail 1W Length (95mm)



MonoRail 4W Length (286mm)

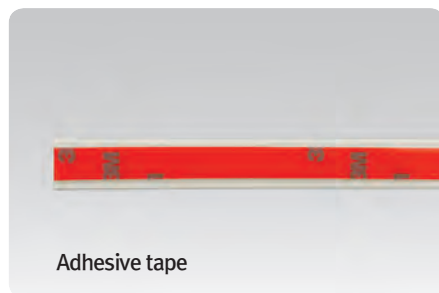
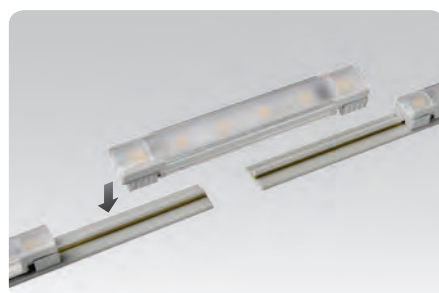
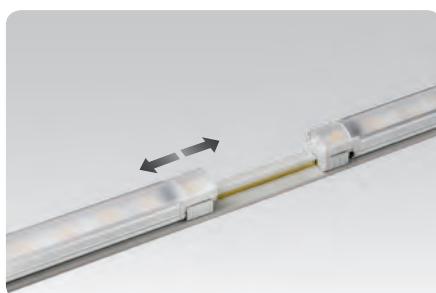
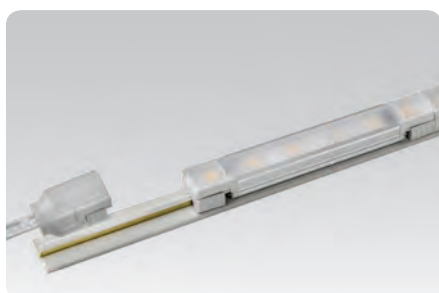


MonoRail 8W Length (572mm)

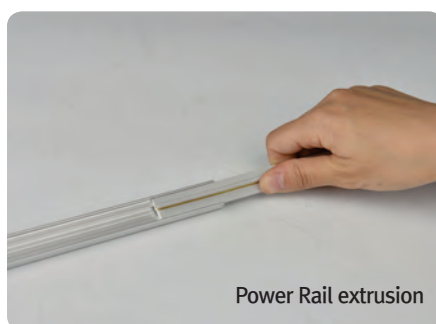
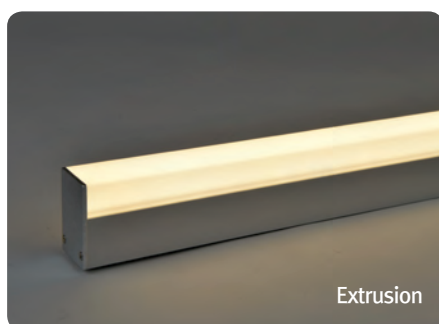


Power Rail (power supply track)

Easy connection



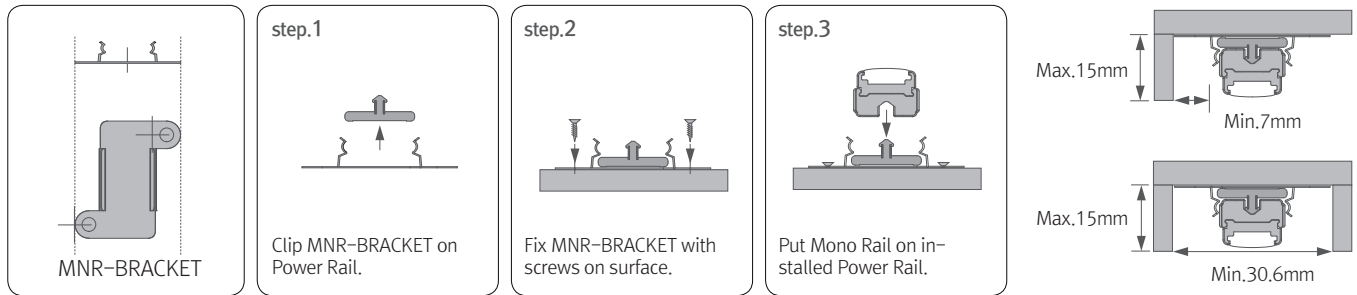
Various option



Power Rail – Power supply track for DIVA 2 Series



Installation



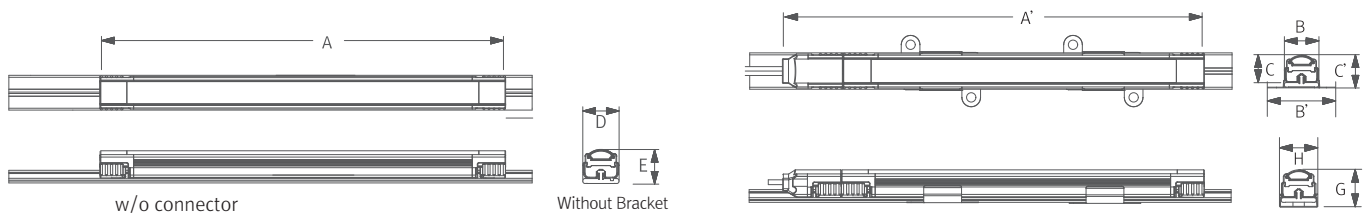
Max. connection

- MonoRail :180W in one row (Single powerfeed)
- LED Driver

LED Driver Model Name	Max. units for LED Driver	
	24V/75W	24V/200W
MNR1 40K-24V	57	153
MNR4 40K-24V	18	50
MNR8 40K-24V	9	25

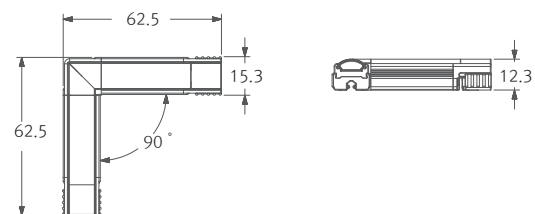
Dimension

Fixture

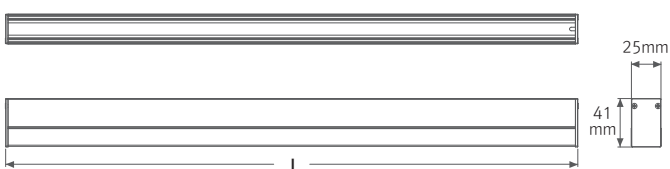


Model Name	Power Input (V)	Lamp Power (W)	A (mm)	A' (mm)	B (mm)	B' (mm)	C (mm)	C' (mm)	D (mm)	E (mm)	G (mm)	H (mm)
MNR1 40K-24V	DC 24	1.3	95	121	15.3	30.6	12.3	14.9	15.6	14.6	17	16.6
MNR4 40K-24V	DC 24	4	286	312	15.3	30.6	12.3	14.9	15.6	14.6	17	16.6
MNR8 40K-24V	DC 24	8	572	598	15.3	30.6	12.3	14.9	15.6	14.6	17	16.6

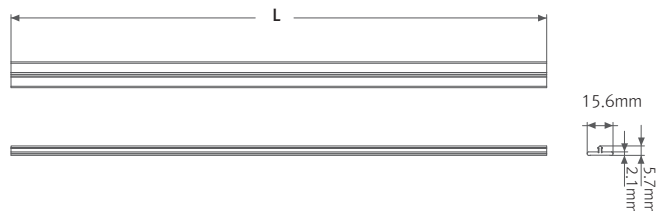
90 ° connector



Extrusion



Power Rail Extrusion





(a) Power Rail (Power supply track) : MNR-Rail (20m)

Power supply track in Roll without adhesive
Standard color : White, Optional color : Black, Gray



(b) Power Rail (Power supply track) : MNR-Rail (1.2m)

Power supply track with adhesive tape
Standard color : White, Optional color : Black, Gray



(c) Adhesive tape

Adhesive tape for Power supply track (16.5 m)



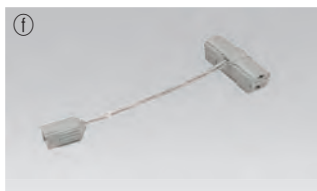
(d) Power supply cable to the Power Rail

MNRPC : 2500mm



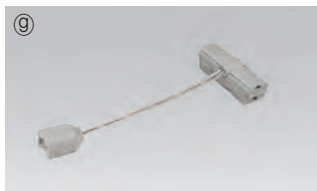
(e) Connecting cable between Power Rails

MNRPTC	MNRPTC1	MNRPTC2	MNRPTC4	MNRPTC6
150mm(6inch)	300mm(1feet)	600mm(1feet)	1200mm(4feet)	1800mm(6feet)



(f) Connecting cable between Power Rail and FLX Stix NDV : MNRPTC-NDV

MNRPTC-NDV1	MNRPTC-NDV2
300mm(1feet)	600mm (2feet)



(g) Connecting cable between Power Rail and FLX Stix HDV&DDV : MNRPTC-HDV

MNRPTC-HDV1	MNRPTC-HDV2
300mm(1feet)	600mm (2feet)

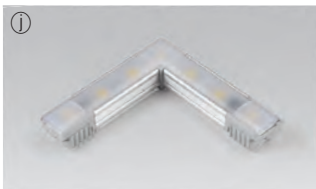


(h) Connecting cable between Power Rail and FLX Spot DVS : MNRPTC-DVS

MNRPTC-DVS1	MNRPTC-DVS2
300mm(1feet)	600mm (2feet)



(i) Sidefeed for seamless extension(1W) : MNR1 40K-24V-S



① 90° connector : MNR1 40K-24V-90

MonoRail90° connector (1W)



Ⓚ LED Driver : FLC75-24V/T (75W 24V)

LED Driver With 6way distributor, with power cord(1800mm)



① LED Driver : FLC200-24V/T (200W 24V)



Ⓜ MonoRail bracket : MNR-BRACKET (standard)



Ⓝ MonoRail bracket : MNR-BRACKET1 (optional)



Ⓞ Dimming Interface (1-10V)

FDC-V10 (Max.48W)

FDC-L10 (Max.100W)



Ⓟ Dimming Interface(0-10/1-10,DMX512)

FDA-L2M0 (200W, 2CH)

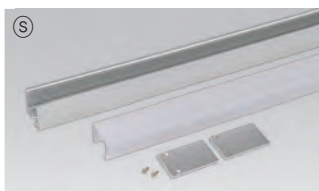
FDA-L5M (200W, 5CH)



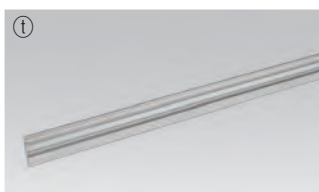
ⓖ Door and motion detection sensor (DC) : FLS-M24V



ⓗ Human-body detection sensor (DC) : FLS-P24V



⑤ Extrusion (1.2m)



① Power Rail extrusion (1.2m)



② End cap : MNR-CAP



MonoRail Spot

LED for Display, Cabinet, Furniture & Cove

Slide and Swivel Mini LED Spotlight





Product Features

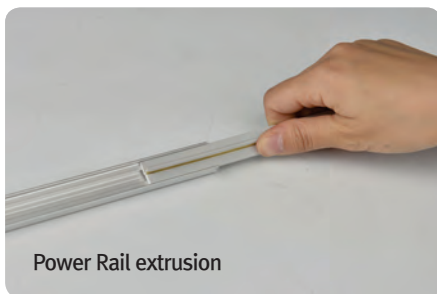
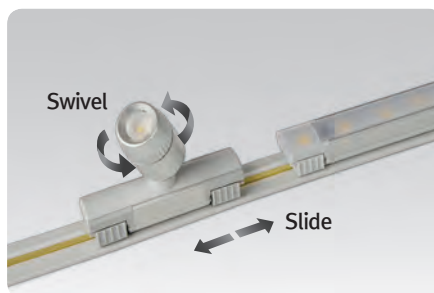
- Compatible and linkable with MonoRail system
- Slide and swivel mini LED spotlight
- Suitable for furniture and showcase application
- Simple Plug & Play connection to the power track
- Available in silver, black
- To be used with constant voltage DC 24V driver
- Dimmable with available accessories

Specification

- Voltage : DC 24V
- Operating temperature : 0~45° C
- Lamp life : 40,000hr / 70%
- Available color : 2700K, 3000K, 4000K, 6000K
- Color rendering : Ra > 85
- Energy efficiency : 65lm/W
- Degree of protection : IP20
- Beam angle : 30°
- Total energy consumption of 1.3W
- Available in silver, black



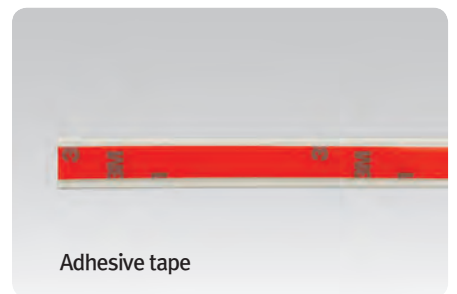
Easy connection



Power Rail extrusion

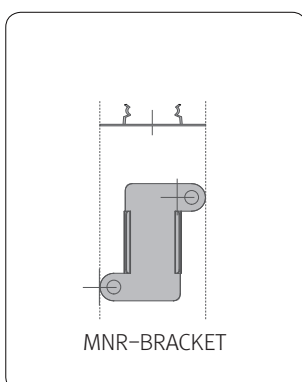


Mounting bracket



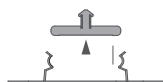
Adhesive tape

Installation



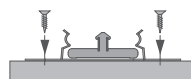
MNR-BRACKET

step.1



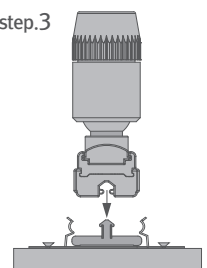
Clip MNR-BRACKET on Power Rail.

step.2



Fix MNR-BRACKET with screws on surface.

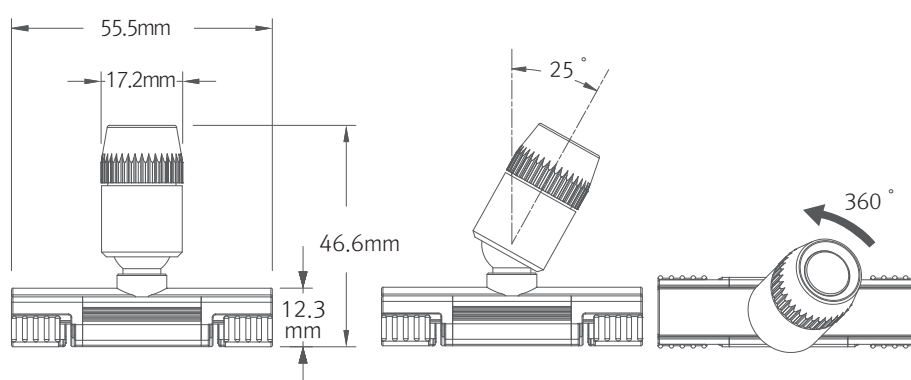
step.3



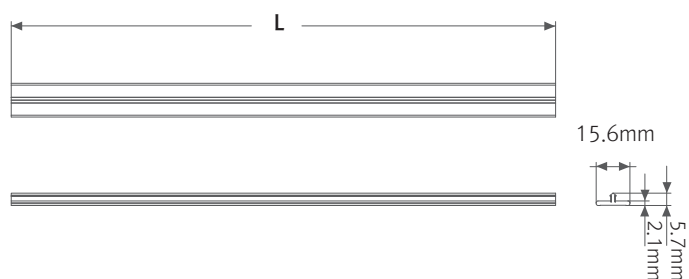
Put MonoRail Spot on installed Power Rail.

Dimension

Fixture



Power Rail Extrusion



Max. connection

- MonoRail Spot :180W in one row (Single powerfeed)
- LED Driver

LED Driver Model Name	Max. units for LED Driver			
	24V/15W	24V/30W	24V/75W	24V/200W
MRS1 40K-24V-SV	11	23	57	153

Accessories



(a) MonoRail Spot

Silver	Black
MRS1 40K-24V-SV	MRS1 40K-24V-BK



(b) Power Rail (Power supply track) : MNR-Rail (20m)

Power supply track in Roll without adhesive
Standard color : White, Optional color : Black, Gray



(c) Power Rail (Power supply track) : MNR-Rail (1.2m)

Power supply track with adhesive tape
Standard color : White, Optional color : Black, Gray



(d) Adhesive tape

Adhesive tape for Power supply track (16.5 meters)



(e) Power supply cable to the Power Rail

MNRPC : 2500mm



(f) LED Driver with 6way distributor, with power cord (1800mm)

Part NO	FLC15-24V/T	FLC30-24V/T	FLC75-24V/T
Capacity	24V/15W	24V/30W	24V/75W



(g) LED Driver : FLC200-24V/T (200W 24V)



(h) Mono rail bracket : MNR-BRACKET (standard)



(i) Mono rail bracket : MNR-BRACKET1 (optional)



① Dimming Interface (1-10V)

FDC-V10 (Max.48W)
FDC-L10 (Max.100W)



Ⓚ Dimming Interface (0-10/1-10, DMX512)

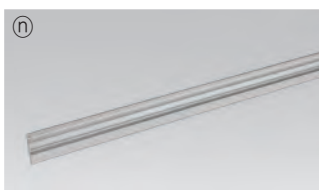
FDA-L2M0 (200W)
FDA-L5M (200W)



① Door and motion detection sensor (DC) : FLS-M24V



Ⓜ Human-body detection sensor (DC) : FLS-P24V



① Power Rail extrusion



Ⓞ End cap : MNR-CAP

* More detail information about accessories, please refer to MonoRail brochure



More slim, Better design!!

LED for Display, Cabinet, Furniture & Cove

FLX Stix Series

FEELUX



FEELUX

FLX Stix NDV

LED for Display, Cabinet, Furniture & Cove

Little light, Big punch!!





Product Features

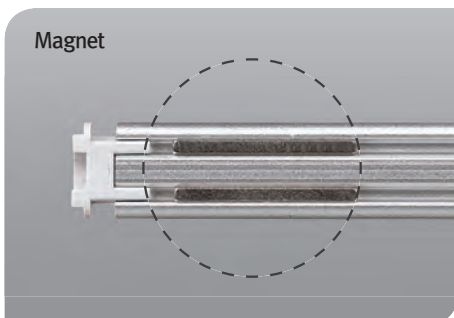
- Super Slim linear LED with standard output
- Quick connection system between fixtures
- Many lengths available
- Various mounting methods including magnetic
- To be used with constant voltage DC 24V driver
- Dimmable with available accessories

Specification

- Voltage : DC 24V
- Operating temperature : 0~45° C
- Lamp life : 40,000hr/70%
- Available color : 2700K, 3000K, 3500K, 4000K, 6000K
- Color rendering : Ra > 85
- Energy efficiency : 75lm/W
- Degree of protection IP20



Magnet



Round diffuser
Spot free LED



Square diffuser
Spot free LED





FLX Stix NDV

Standard Output



FLX Stix NDV 1W length (100 mm)



FLX Stix NDV 2 3W length (192 mm)



FLX Stix NDV 4W length (285 mm)



FLX Stix NDV 7W length (565 mm)



FLX Stix NDV 11W length (845 mm)



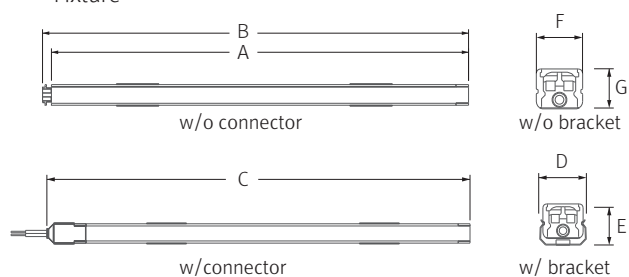
FLX Stix NDV 15W length (1123mm)

Various options

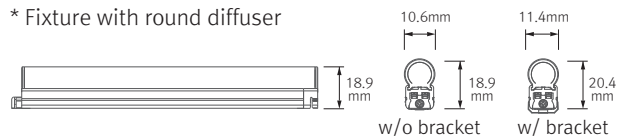


Dimension

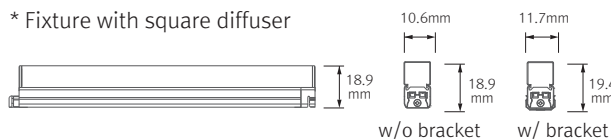
* Fixture



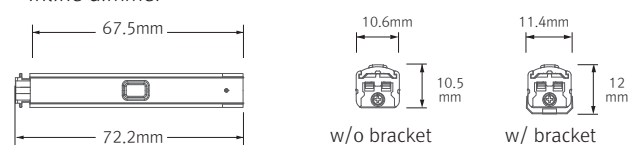
* Fixture with round diffuser



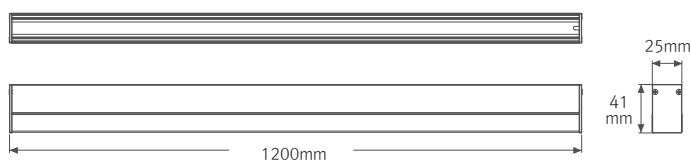
* Fixture with square diffuser



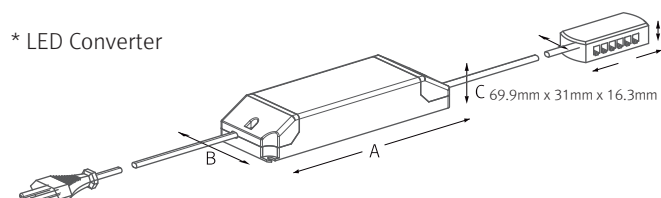
* Inline dimmer



* Extrusion

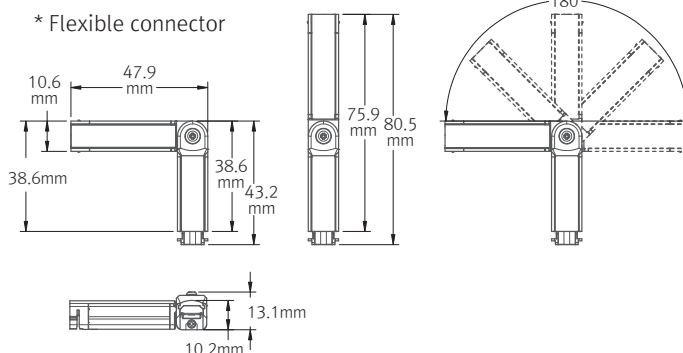


* LED Converter



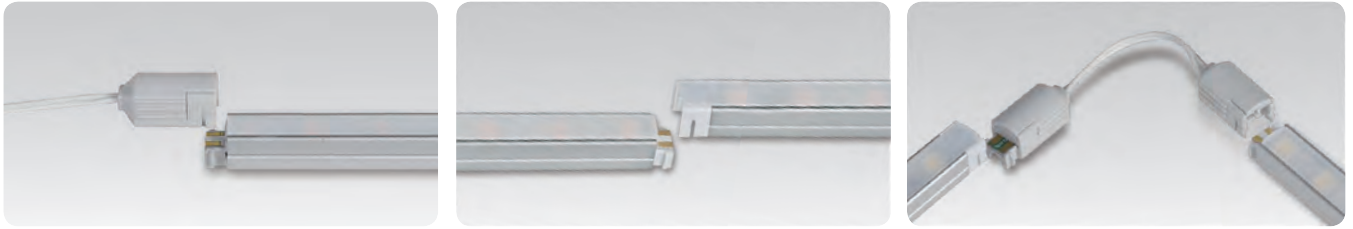
Model Name	Power Input (V)	Lamp Power (W)	A (mm)	B (mm)	C (mm)	D (mm)	E (mm)	F (mm)	G (mm)
NDV1 40K-24V	DC 24	1.2	95	100	117	12	11	10.6	9
NDV3 40K-24V	DC 24	2.4	188	192	210	12	11	10.6	9
NDV4 40K-24V	DC 24	3.5	280	285	302	12	11	10.6	9
NDV7 40K-24V	DC 24	7	560	565	582	12	11	10.6	9
NDV11 40K-24V	DC 24	10.5	840	845	862	12	11	10.6	9
NDV15 40K-24V	DC 24	14	1118	1123	1140	12	11	10.6	9

* Flexible connector

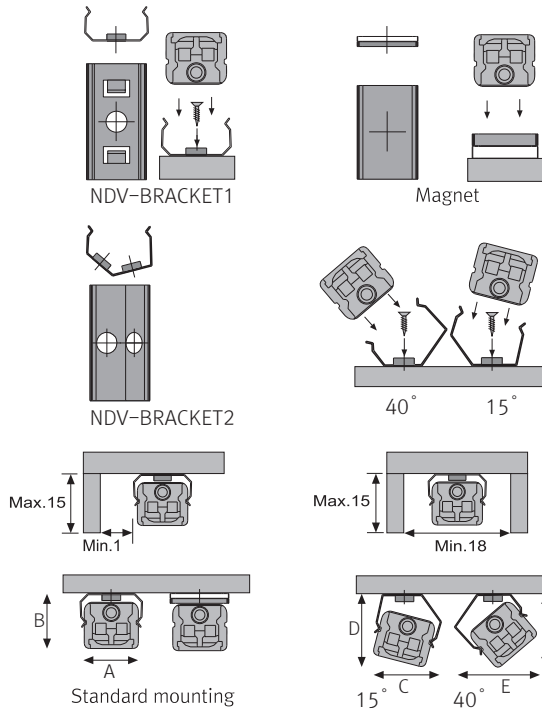


Modle name	A (mm)	B (mm)	C (mm)
FLC15-24V/T	121	45	16
FLC30-24V/T	150	41	31
FLC75-24V/T	180	60	32
FLC200-24V/T	250	65	38

Easy connection



Installation



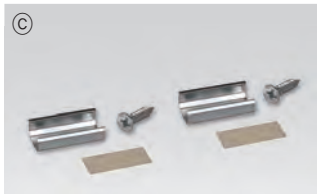
Max. connection

- FLX Stix NDV : 55Watt in one row (single power feed)
- LED Driver

LED Driver Model Name	Max. units for LED Driver			
	24V/15W	24V/30W	24V/75W	24V/200W
NDV1 40K-24V	12	25	62	160
NDV3 40K-24V	5	10	25	66
NDV4 40K-24V	4	7	18	50
NDV7 40K-24V	2	4	10	28
NDV11 40K-24V	1	2	6	18
NDV15 40K-24V	1	2	5	13

	A(mm)	B(mm)	C(mm)	D(mm)	E(mm)	F(mm)
Flat type	11.9	11.2	13.5	13.5	14.5	13
Round type	11.9	19.8	15.7	15.7	18.8	20.3
Square type	11.9	19.6	15.5	15.8	18.8	20.3

Accessories



① Connecting cables (Between FLX Stix NDV & FLX Stix NDV)

NDVPTC	NDVPTC1	NDVPTC2	NDVPTC4	NDVPTC6
150mm(6inch)	300mm(1feet)	600mm(2feet)	1200mm(4feet)	1800mm(6feet)

② Power feed : NDVPC

Power feed (Between DIVA2 & 6-way distributor)

③ Mounting bracket : NDV-BRACKET 1

Included in fixture

④ Angle bracket (15° & 40°) : NDV-BRACKET 2

⑤ Sidefeed for seamless extension (3W) : NDV3 40K-24V-S

The dimension is the same as NDV3 40K-24V
Powered only through cable, no power supply on the connector

⑥ Connector : NDV1 40K-24V-FLEX

FLX Stix NDV Flexible connector(1W)

⑦ End cap : NDV-CAP

Included in fixture

⑧ LED Driver with 6way distributor, with power cord (1800mm)

Part No	FLC15-24V/T	FLC30-24V/T	FLC75-24V/T
Capacity	15W 24V	30W 24V	75W 24V



① LED Driver : FLC200-24V/T (200W 24V)



② Dimming Interface (1-10V)

FDC-V10 (Max.48W)

FDC-L10 (Max.100W)



③ Dimming Interface(0-10/1-10,DMX512)

FDA-L2M0 (200W, 2CH)

FDA-L5M (200W , 5CH)

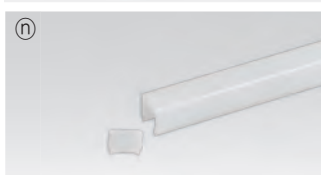


④ Inline dimmer : NDVDIM (Max 55W in a row)



⑤ Round diffuser

NDV1CVRM	NDV3CVRM	NDV4CVRM	NDV7CVRM	NDV11CVRM	NDV15CVRM
1W	3W	4W	7W	11W	15W



⑥ Square diffuser

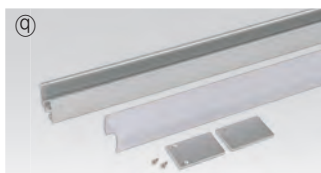
NDV1CVSM	NDV3CVSM	NDV4CVSM	NDV7CVSM	NDV11CVSM	NDV15CVSM
1W	3W	4W	7W	11W	15W



⑦ Door and motion detection sensor (DC) : FLS-M24V



⑧ Human-body detection sensor (DC) : FLS-P24V



⑨ Extrusion (1.2m)



⑩ Connecting bracket : NDV-BRACKET3

Included in fixture



⑪ Power bracket : NDV-BRACKET4

Provided with power feed (NDVPC)

FEELUX

FLX Stix HDV HO

LED for Display, Cabinet, Furniture & Cove

Little light, Bigger punch!



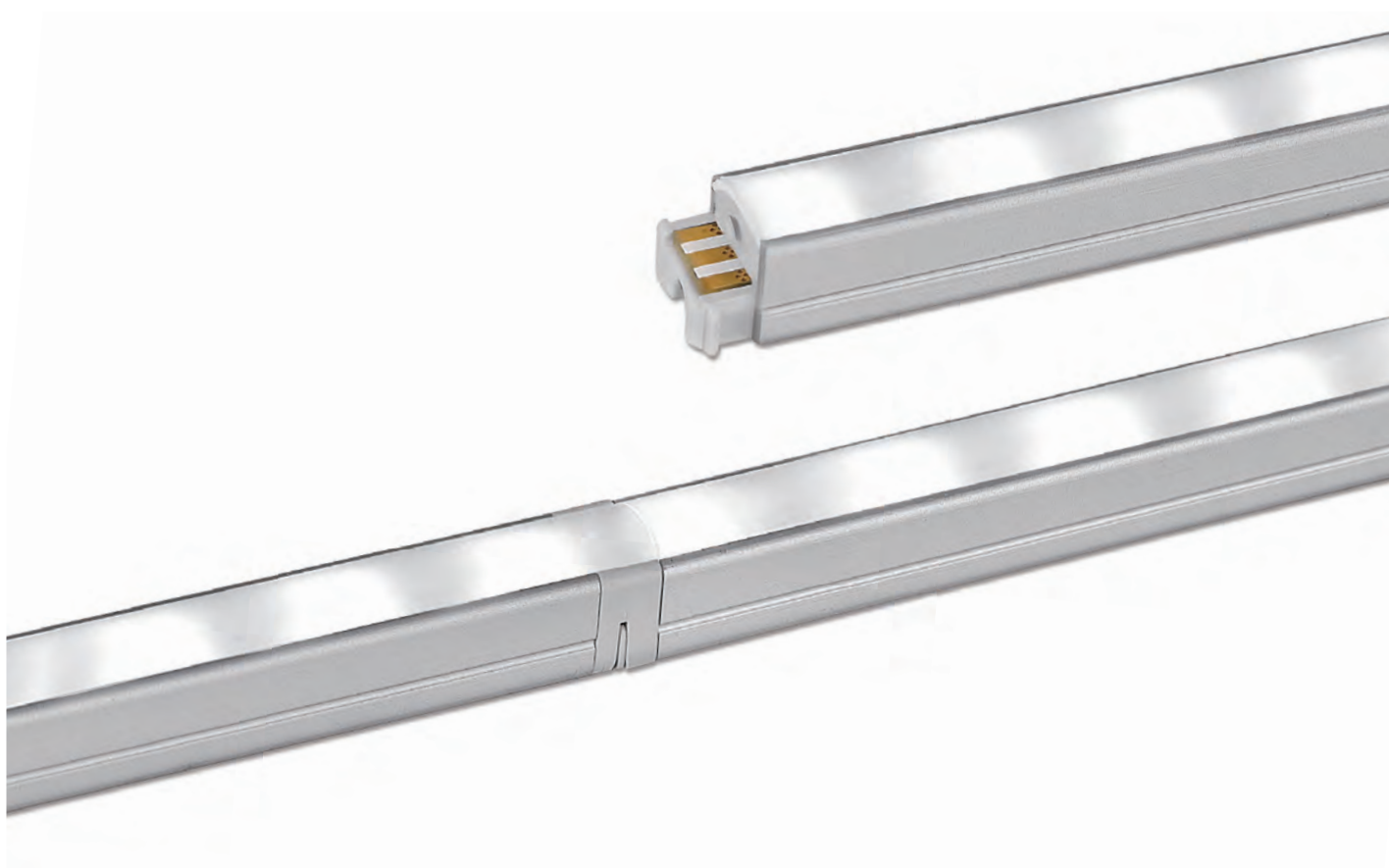


Product Features

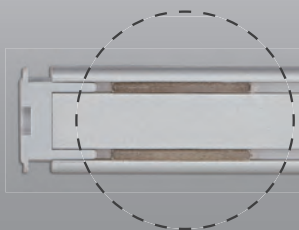
- Super Slim linear LED with high output
- Quick connection system between fixtures
- Many lengths available
- Various mounting methods including magnetic
- To be used with constant voltage DC 24V driver
- Dimmable with available accessories

Specification

- Voltage : DC 24V
- Operating temperature : 0~45° C
- Lamp life : 40,000hr/70%
- Available color : 2700K, 3000K, 3500K, 4000K, 6000K
- Color rendering : Ra > 85
- Energy efficiency : 85 lm/W
- Degree of protection IP20



Magnet



Round diffuser
Spot free LED



Square diffuser
Spot free LED





FLX Stix HDV

High Output



FLX Stix HDV 3W Length (145 mm)



FLX Stix HDV 6W Length (285 mm)



FLX Stix HDV 12W Length (565 mm)

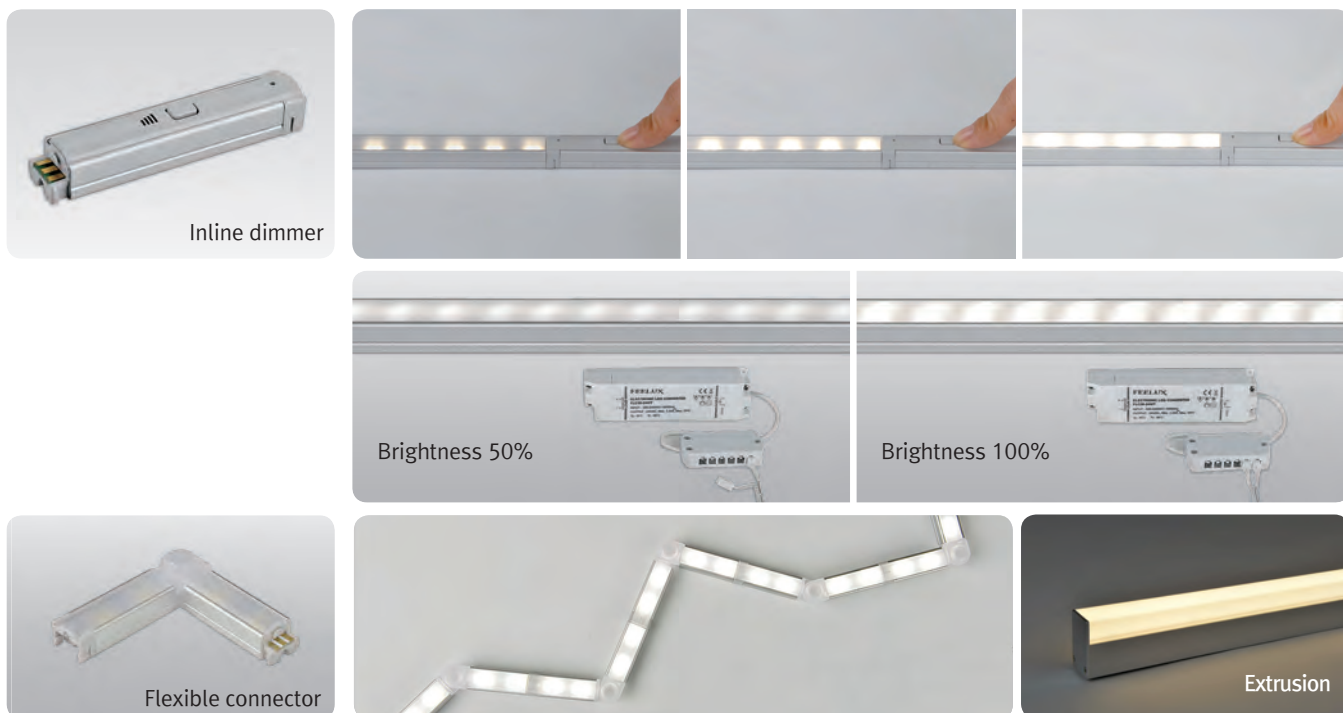


FLX Stix HDV 18W Length (845 mm)



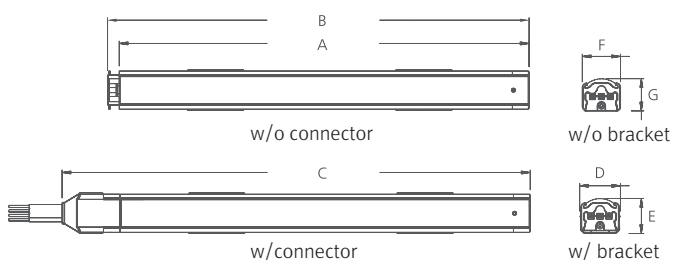
FLX Stix HDV 24W Length (1123mm)

Various options



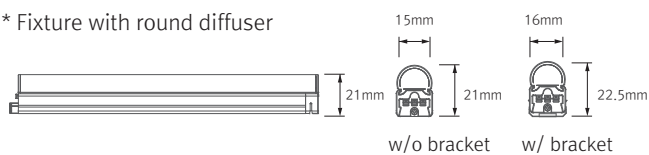
Dimension

* Fixture

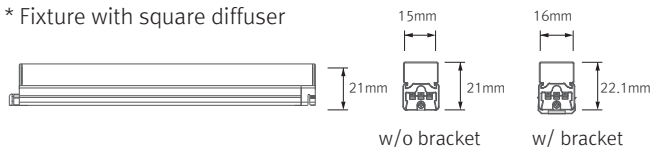


Model Name	Power Input (V)	Lamp Power (W)	A (mm)	B (mm)	C (mm)	D (mm)	E (mm)	F (mm)	G (mm)
HDV3 40K-24V	DC 24	2.9	140	145	162	16	14	15	12.5
HDV6 40K-24V	DC 24	5.8	280	285	302	16	14	15	12.5
HDV12 40K-24V	DC 24	11.6	560	565	582	16	14	15	12.5
HDV18 40K-24V	DC 24	17.4	840	845	862	16	14	15	12.5
HDV24 40K-24V	DC 24	23.2	1118	1123	1140	16	14	15	12.5

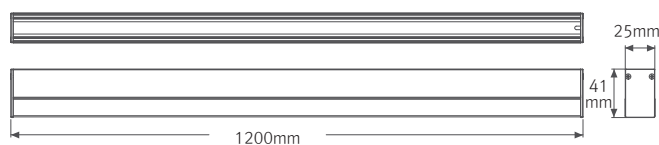
* Fixture with round diffuser



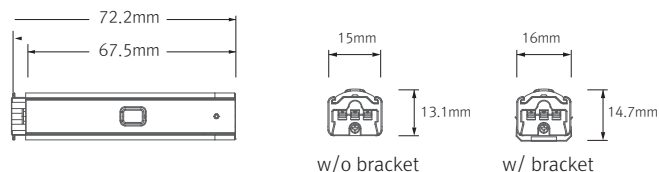
* Fixture with square diffuser



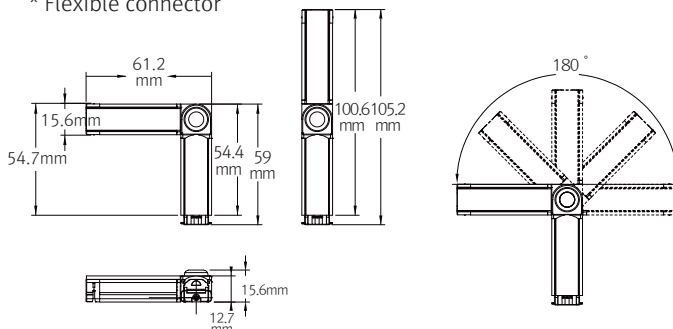
* Extrusion



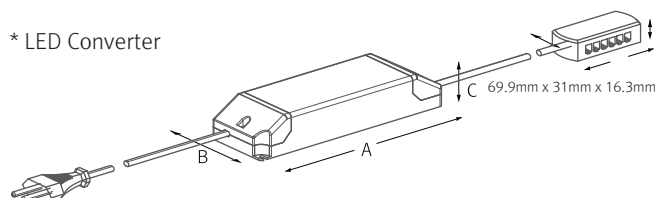
* Inline dimmer



* Flexible connector

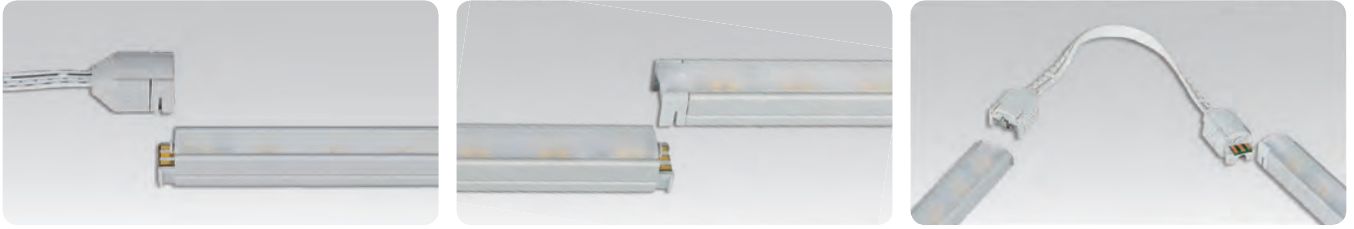


* LED Converter

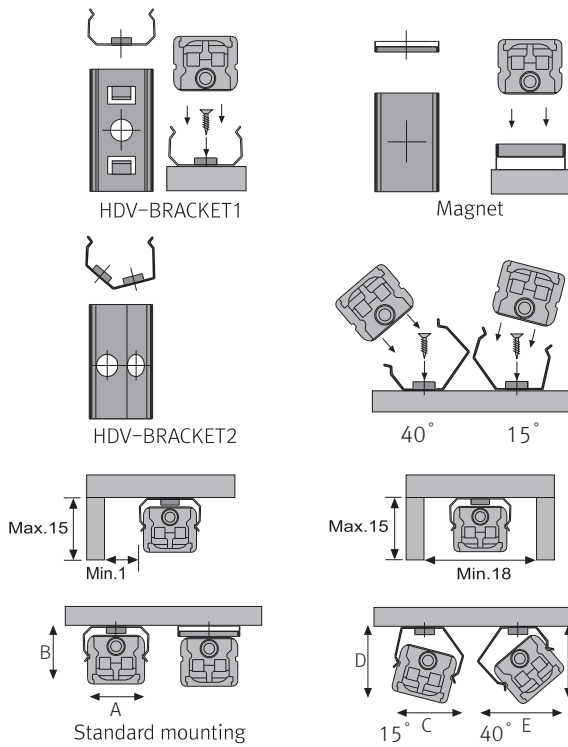


Mode name	A (mm)	B (mm)	C (mm)
FLC15-24V/T	121	45	16
FLC30-24V/T	150	41	31
FLC75-24V/T	180	60	32
FLC200-24V/T	250	65	38

Easy connection



Installation



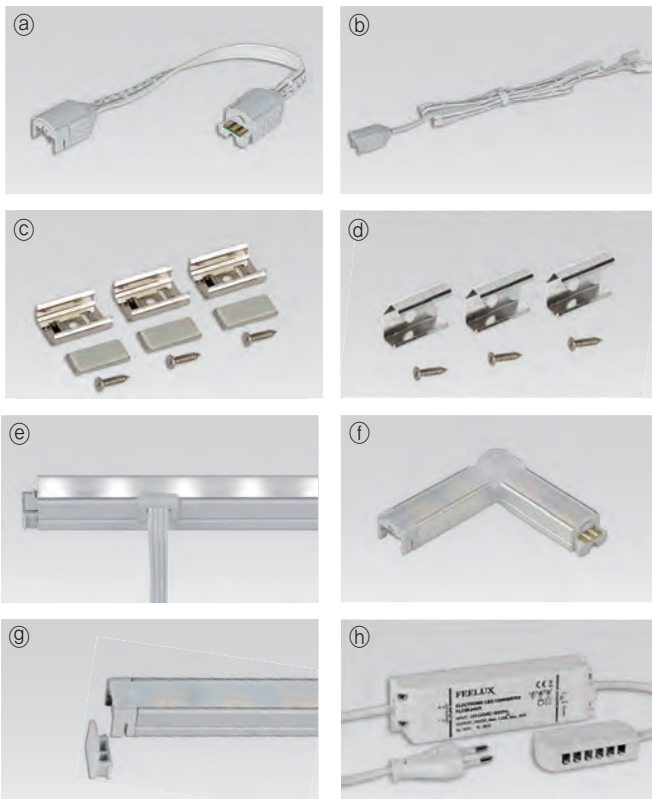
Max. connection

- FLX Stix HDV : 75Watt in one row (single power feed)
- LED Driver

LED Driver Model Name	Max. units for LED Driver			
	24V/15W	24V/30W	24V/75W	24V/200W
HDV3 40K-24V	5	10	25	66
HDV6 40K-24V	2	5	12	33
HDV12 40K-24V	1	2	6	16
HDV18 40K-24V	-	1	4	11
HDV24 40K-24V	-	1	3	8

	A(mm)	B(mm)	C(mm)	D(mm)	E(mm)	F(mm)
Flat type	16.8	14.2	17.5	16.5	19.1	17.5
Round type	16.8	22.1	18.8	24.4	23.4	22.9
Square type	16.8	22.6	21.3	26.2	25.7	25.7

Accessories



⑧ Connecting cables (Between FLX Stix HDV & FLX Stix HDV)

HDVPTC	HDVPTC1	HDVPTC2	HDVPTC4	HDVPTC6
150mm(6inch)	300mm(1feet)	600mm(2feet)	1200mm(4feet)	1800mm(6feet)

⑨ Power feed : HDVPC

Power feed 2500mm (Between FLX Stix HDV & 6-way distributor)

⑩ Mounting bracket : HDV-BRACKET1

Included in fixture

⑪ Angle bracket (15° & 40°) : HDV-BRACKET2

⑫ Sidefeed for seamless extension (3W) : HDV3 40K-24V-S

The dimension is the same as HDV3 40K-24V
Powered only through cable, no power supply on the connector

⑬ Connector : HDV3 40K-24V-FLEX

FLX Stix HDV Flexible connector(3W)

⑭ End cap : HDV-CAP

Included in fixture

⑮ LED Driver with 6way distributor, with power cord (1800mm)

Part No	FLC15-24V/T	FLC30-24V/T	FLC75-24V/T
Capacity	15W 24V	30W 24V	75W 24V



① LED Driver : FLC200-24V/T (200W 24V)



① Dimming Interface (1-10V)

FDC-V10 (Max.48W)
FDC-L10 (Max.100W)

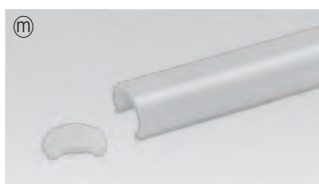


① Dimming Interface(0-10/1-10,DMX512)

FDA-L2M0 (200W, 2CH)
FDA-L5M (200W , 5CH)



① Inline dimmer : HDVDIM (Max 75W in a row)



① Round diffuser

HDV3CVRM	HDV6CVRM	HDV12CVRM	HDV18CVRM	HDV24CVRM
3W	6W	12W	18W	24W



① Square diffuser

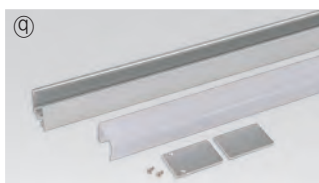
HDV3CVSM	HDV6CVSM	HDV12CVSM	HDV18CVSM	HDV24CVSM
3W	6W	12W	18W	24W



① Door and motion detection sensor (DC) : FLS-M24V



① Human-body detection sensor (DC) : FLS-P24V



① Extrusion (1.2m)



① Connecting bracket : HDV-BRACKET3

Included in fixture

FLX Stix DDV

LED for Display, Cabinet, Furniture & Cove

Dynamic white LED



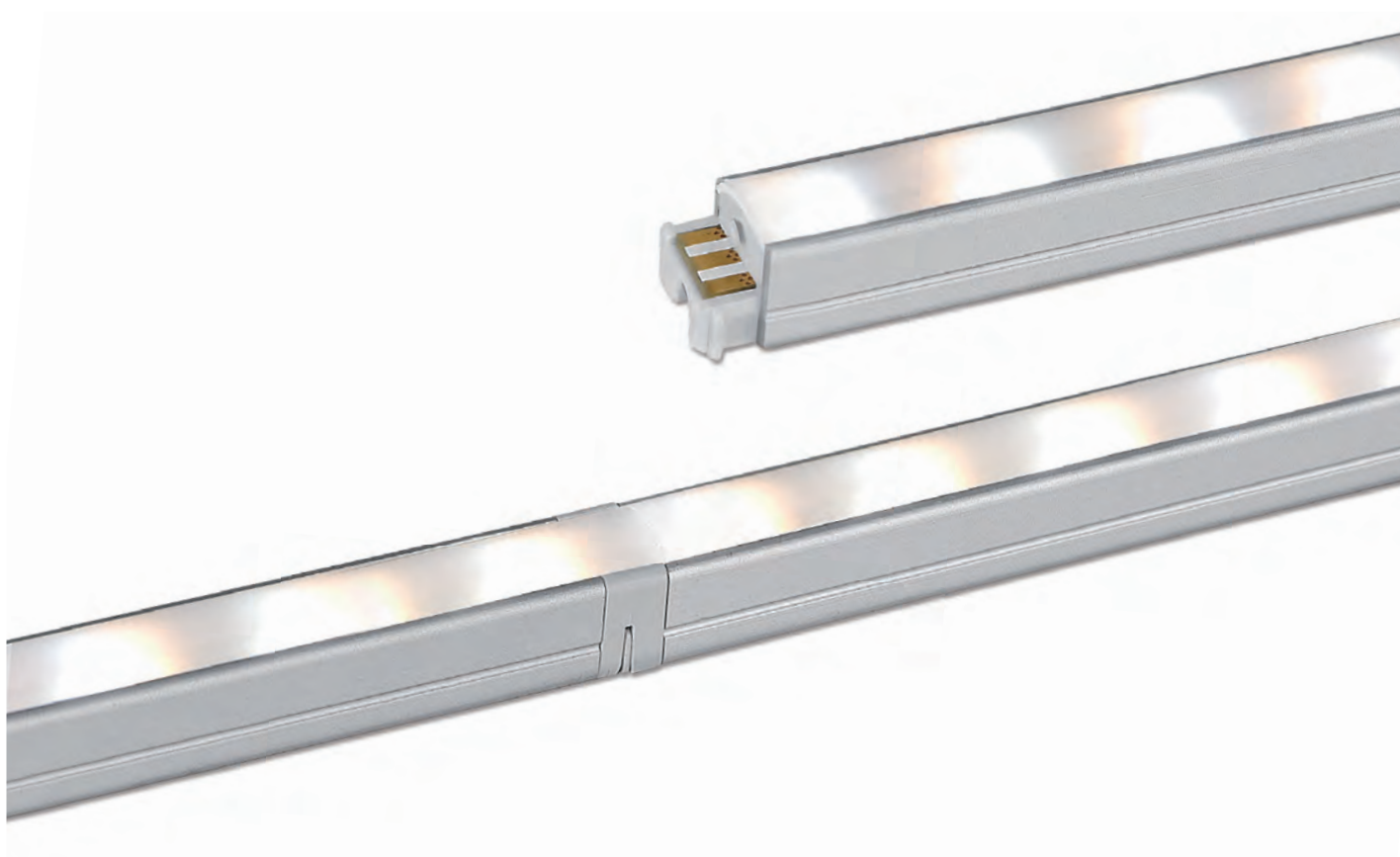


Product Features

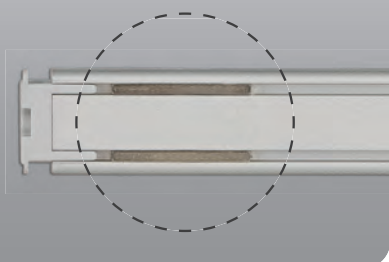
- Super Slim linear LED with white color changing output
- Quick connection system between fixtures
- Many lengths available
- Various mounting methods including magnetic
- To be used with constant voltage DC 24V driver
- Dimmable with available accessories

Specification

- Voltage : DC 24V
- Operating temperature : 0~45° C
- Lamp life : 40,000hr/70%
- Available color : 2700K ~ 6000K
- Color rendering : Ra > 85
- Energy efficiency : 75 lm/W
- Degree of protection IP20



Magnet



Round diffuser
Spot free LED



Square diffuser
Spot free LED





FLX Stix DDV Dynamic White



FLX Stix DDV 3W Length (145 mm)



FLX Stix DDV 6W Length (285 mm)



FLX Stix DDV 12W Length (565 mm)

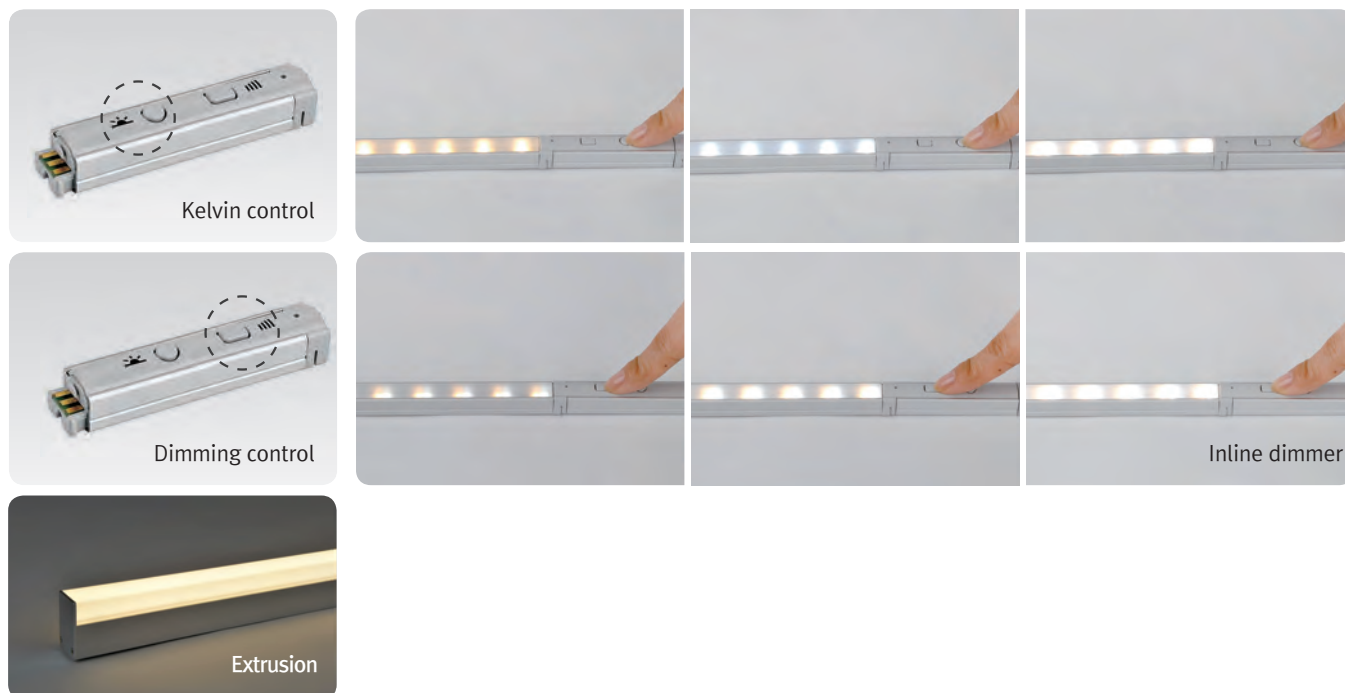


FLX Stix DDV 18W Length (845 mm)



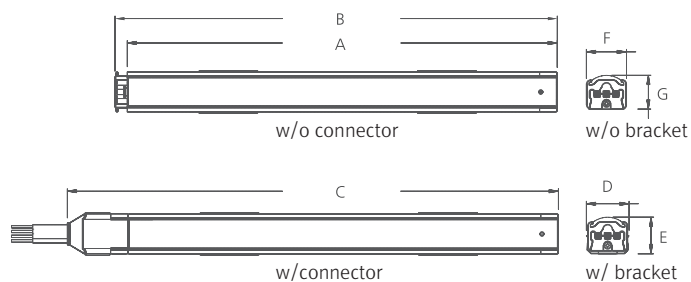
FLX Stix DDV 24W Length (1123mm)

Various options



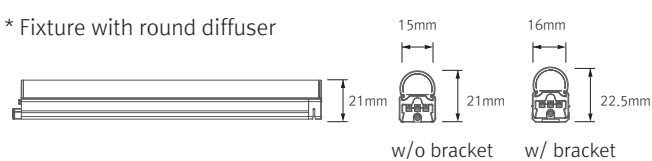
Dimension

* Fixture

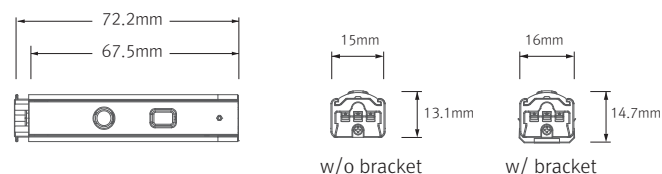


Model Name	Power Input (V)	Lamp Power (W)	A (mm)	B (mm)	C (mm)	D (mm)	E (mm)	F (mm)	G (mm)
DDV3 WC-24V	DC 24	2.9	140	145	162	16	14	15	12.5
DDV6 WC-24V	DC 24	5.8	280	285	302	16	14	15	12.5
DDV12 WC-24V	DC 24	11.6	560	565	582	16	14	15	12.5
DDV18 WC-24V	DC 24	17.4	840	845	862	16	14	15	12.5
DDV24 WC-24V	DC 24	23.2	1118	1123	1140	16	14	15	12.5

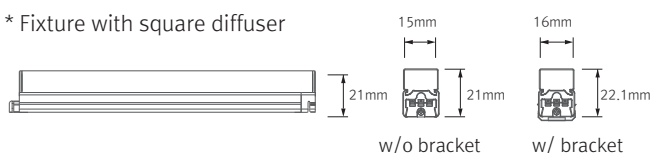
* Fixture with round diffuser



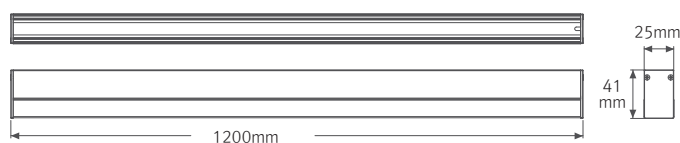
* Inline dimmer



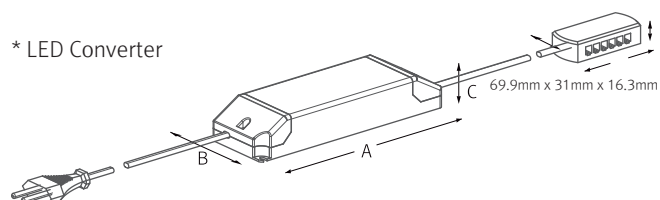
* Fixture with square diffuser



* Extrusion



* LED Converter

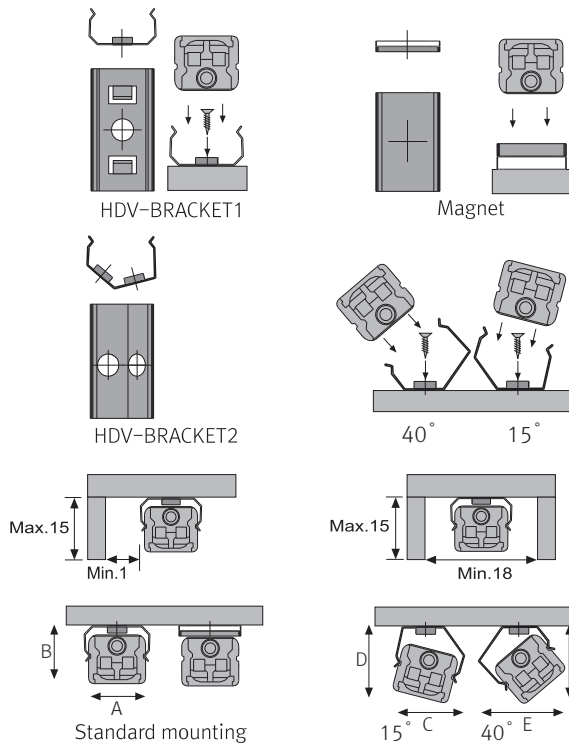


Mode name	A (mm)	B (mm)	C (mm)
FLC15-24V/T	121	45	16
FLC30-24V/T	150	41	31
FLC75-24V/T	180	60	32
FLC200-24V/T	250	65	38

Easy connection



Installation



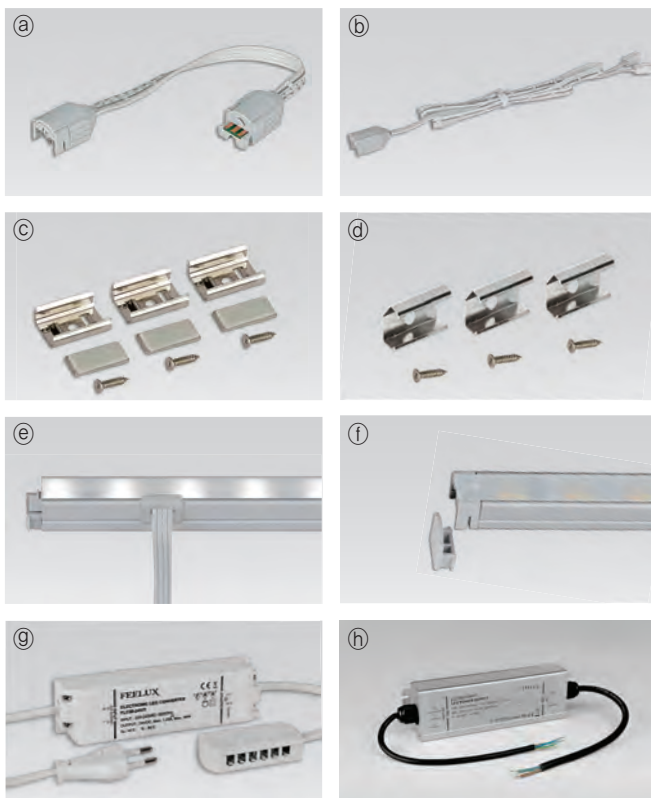
Max. connection

- FLX Stix DDV : 75Watt in one row (single power feed)
- LED Driver

LED Driver Model Name	Max. units for LED Driver			
	24V/15W	24V/30W	24V/75W	24V/200W
DDV3 WC-24V	5	10	25	66
DDV6 WC-24V	2	5	12	33
DDV12 WC-24V	1	2	6	16
DDV18 WC-24V	-	1	4	11
DDV24 WC-24V	-	1	3	8

	A(mm)	B(mm)	C(mm)	D(mm)	E(mm)	F(mm)
Flat type	16.8	14.2	17.5	16.5	19.1	17.5
Round type	16.8	22.1	18.8	24.4	23.4	22.9
Square type	16.8	22.6	21.3	26.2	25.7	25.7

Accessories



Ⓐ Connecting cables (Between FLX Stix DDV & FLX Stix DDV)

HDVPTC	HDVPTC1	HDVPTC2	HDVPTC4	HDVPTC6
150mm(6inch)	300mm(1feet)	600mm(2feet)	1200mm(4feet)	1800mm(6feet)

Ⓑ Power feed : HDVPC

Power feed 2500mm (Between FLX Stix DDV & 6-way distributor)

Ⓒ Mounting bracket : HDV-BRACKET1

Included in fixture

Ⓓ Angle bracket (15° & 40°) : HDV-BRACKET2

Ⓔ Sidefeed for seamless extension (3W) : DDV3 WC-24V-S

The dimension is the same as DDV3 WC-24
Powered only through cable, no power supply on the connector

Ⓕ End cap : HDV - CAP

Included in fixture

Ⓖ LED Driver with 6way distributor, with power cord(1800mm)

Part No	FLC15-24V/T	FLC30-24V/T	FLC75-24V/T
Capacity	15W 24V	30W 24V	75W 24V

Ⓗ LED Driver : FLC200-24V/T (200W 24V)



① Dimming Interface (1-10V)

FDC-V10 (Max.48W)
FDC-L10 (Max.100W)

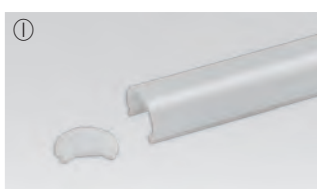


① Dimming Interface(0-10/1-10,DMX512)

FDA-L2M0 (200W, 2CH)
FDA-L5M (200W , 5CH)

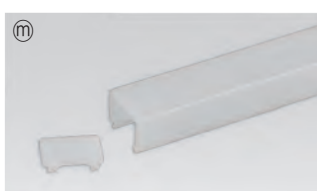


Ⓚ Inline Dimmer : DDVDIM (Max 75W in a row)



① Round diffuser

HDV3CVRM	HDV6CVRM	HDV12CVRM	HDV18CVRM	HDV24CVRM
3W	6W	12W	18W	24W



Ⓜ Square diffuser

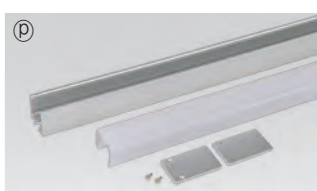
HDV3CVSM	HDV6CVSM	HDV12CVSM	HDV18CVSM	HDV24CVSM
3W	6W	12W	18W	24W



Ⓝ Door and motion detection sensor (DC) : FLS-M24V



Ⓞ Human-body detection sensor (DC) : FLS-P24V



Ⓟ Extrusion (1.2m)



Ⓠ Connecting bracket : HDV-BRACKET3

Included in fixture



Make your own rainbow!

Color changing LED

FLX Stix RDV

FEELUX



FLX Stix RDV

LED for Display, Cabinet, Furniture & Cove

Color changing LED!



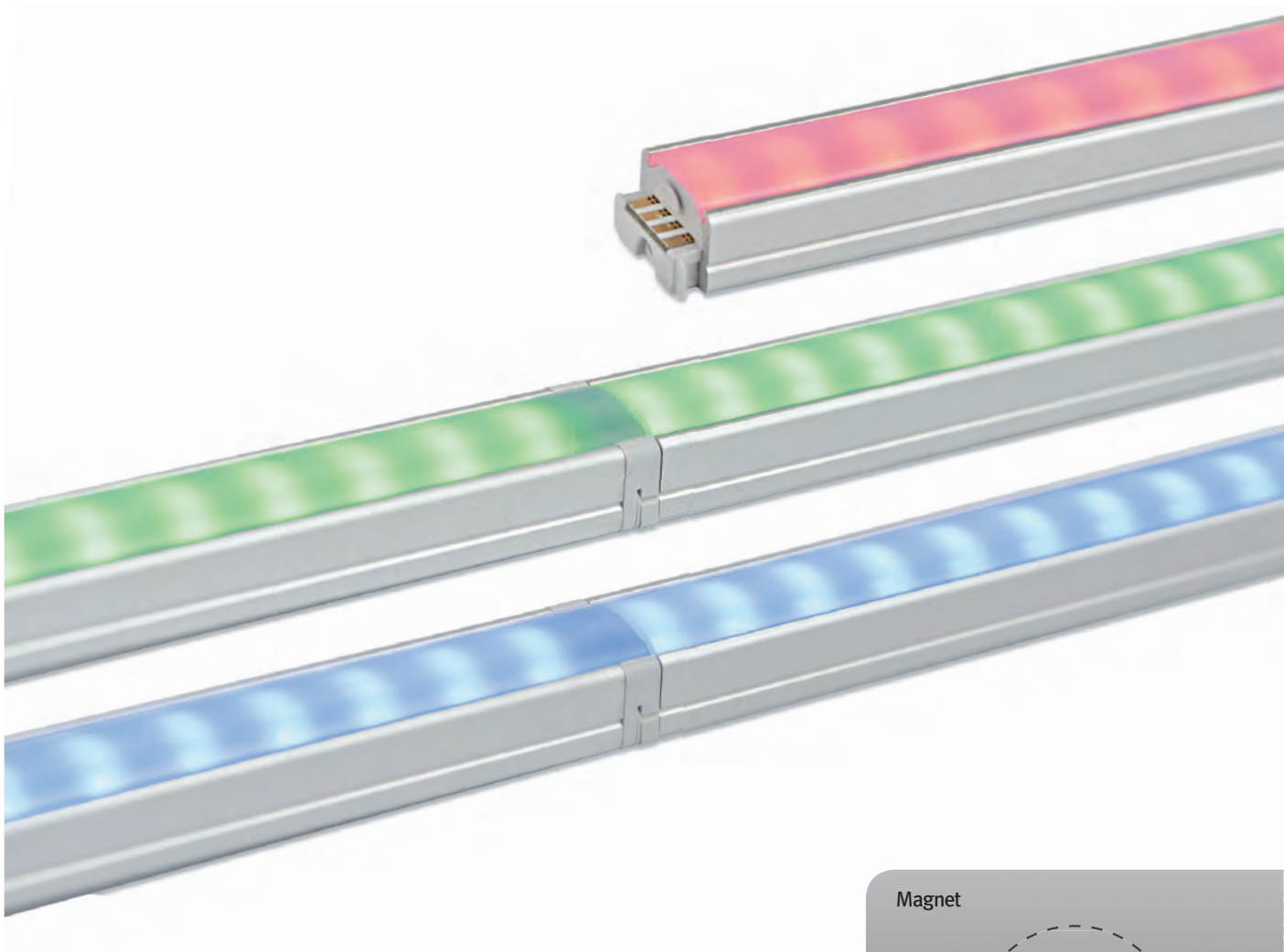


Product Features

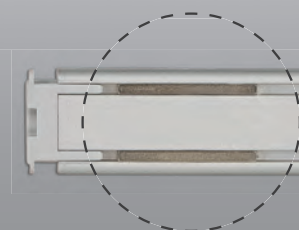
- Super Slim linear LED with RGB color changing output
- Quick connection system between fixtures
- Many lengths available
- Various mounting methods including magnetic
- To be used with constant voltage DC 24V driver
- Dimmable with available accessories

Specification

- Voltage : DC 24V
- Operating temperature : 0~45° C
- Lamp life : 40,000hr
- RGB color changing
- Degree of protection IP20



Magnet





FLX Stix RDV

Color changing



FLX Stix RDV 6W Length (285 mm)

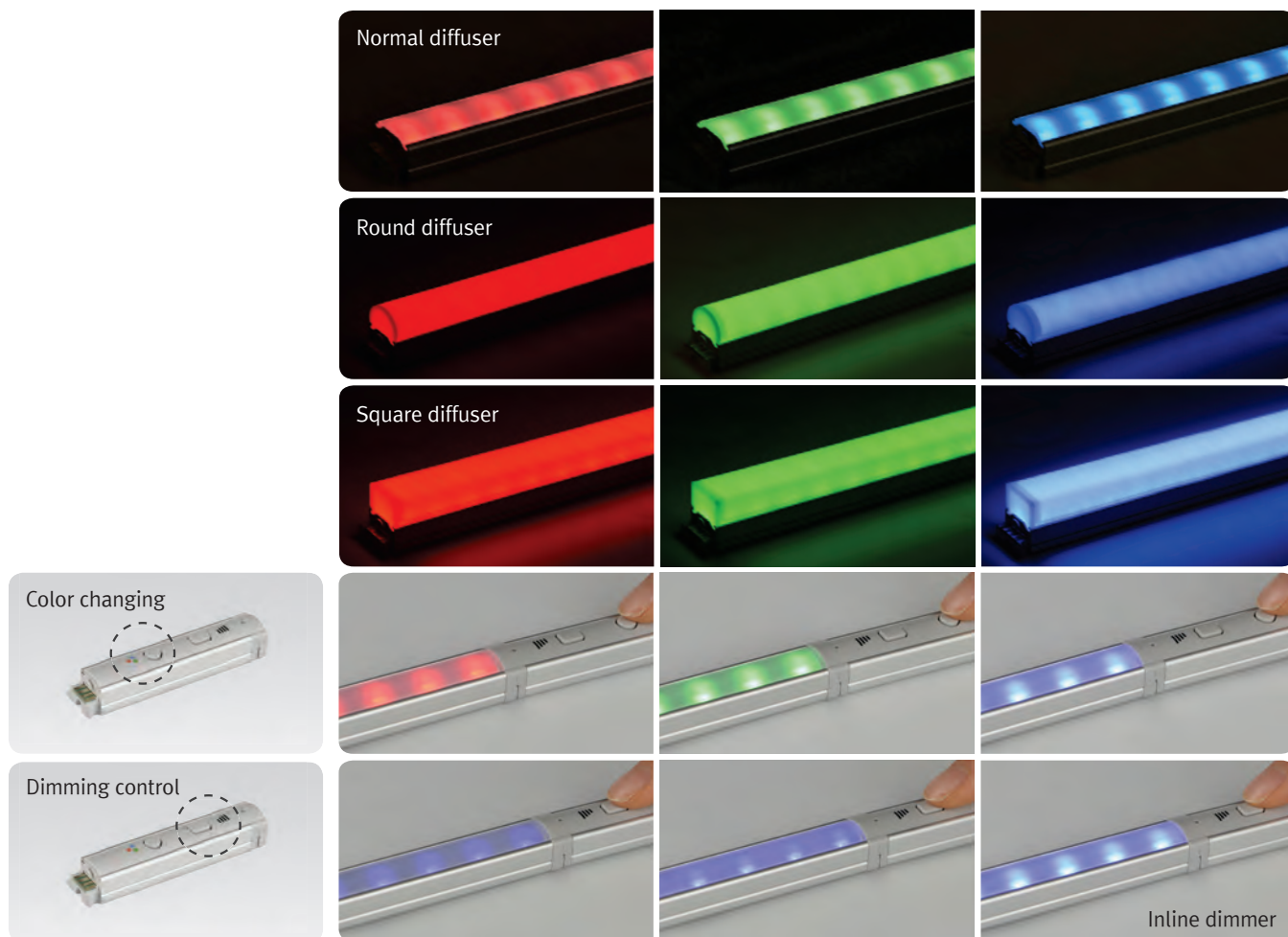


FLX Stix RDV 12W Length (565 mm)



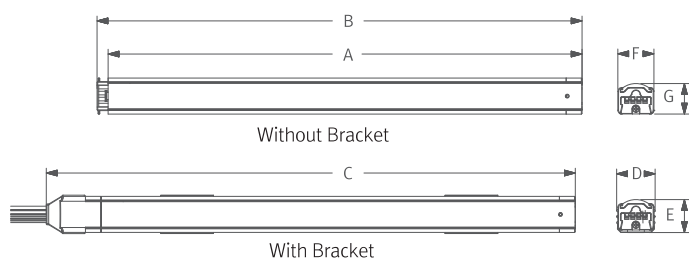
FLX Stix RDV 18W Length (845 mm)

Color changing



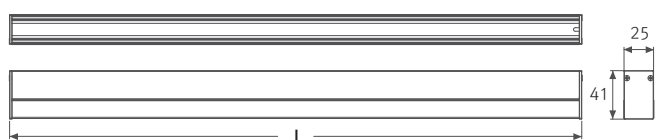
Dimension

* Fixture

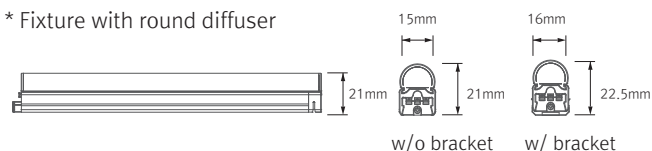


Model Name	Power Input (V)	Lamp Power (W)	A (mm)	B (mm)	C (mm)	D (mm)	E (mm)	F (mm)	G (mm)
RDV6 RGB-24V	DC 24	6.2	280	285	302	16	14	15	12.5
RDV12 RGB-24V	DC 24	12.4	560	565	582	16	14	15	12.5
RDV18 RGB-24V	DC 24	18.6	840	845	862	16	14	15	12.5

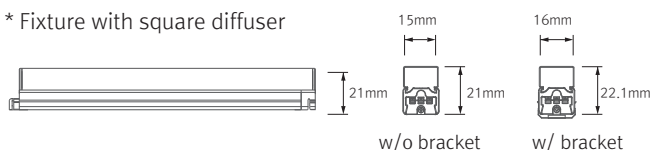
* Extrusion



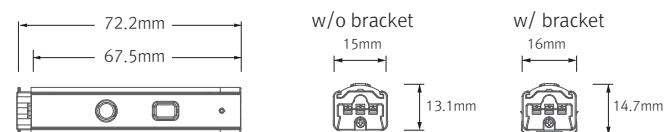
* Fixture with round diffuser



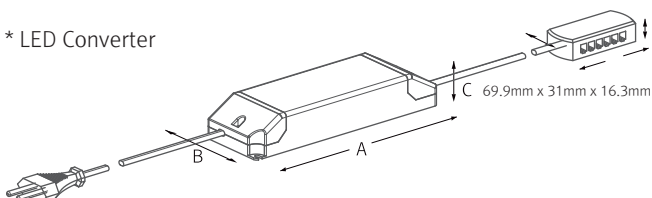
* Fixture with square diffuser



* Inline dimmer



* LED Converter

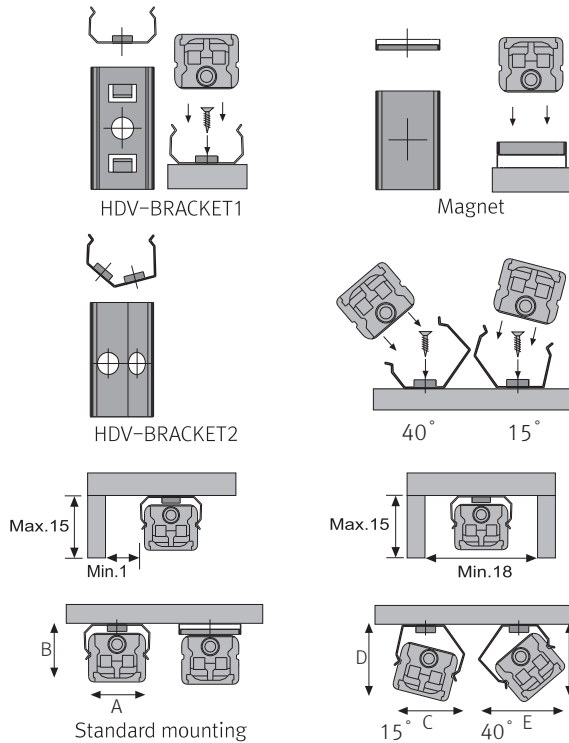


Model name	A (mm)	B (mm)	C (mm)
FLC15-24V/T	121	45	16
FLC30-24V/T	150	41	31
FLC75-24V/T	180	60	32
FLC200-24V/T	250	65	38

Easy connection



Installation



Max. connection

- FLX Stix RDV : 75Watt in one row (single power feed)
- LED Driver

LED Driver Model Name	Max. units for LED Driver			
	24V/15W	24V/30W	24V/75W	24V/200W
RDV6 RGB-24V	2	5	12	33
RDV12 RGB-24V	1	2	6	16
RDV18 RGB-24V	-	1	4	11

	A(mm)	B(mm)	C(mm)	D(mm)	E(mm)	F(mm)
Flat type	16.8	14.2	17.5	16.5	19.1	17.5
Round type	16.8	22.1	18.8	24.4	23.4	22.9
Square type	16.8	22.6	21.3	26.2	25.7	25.7

Accessories



① Connecting cables (Between FLX Stix RDV & FLX Stix RDV)

RDVPTC	RDVPTC1	RDVPTC2	RDVPTC4	RDVPTC6
150mm(6inch)	300mm(1feet)	600mm(2feet)	1200mm(4feet)	1800mm(6feet)



② Power feed : RDVPC

Power feed 2500mm (Between DIVA2 RGB & 6-way distributor)



③ Mounting bracket : HDV-BRACKET1

Included in fixture



④ Angle bracket (15° & 40°) : HDV-BRACKET2



e Sidefeed for seamless extension (6W) : RDV6 RGB-24V-S

The dimension is the same as RDV6RGB24M
Powered only through cable, no power supply on the connector



f End cap : HDV – CAP

Included in fixture



g LED Driver with 6way distributor, with power cord(1800mm)

Part No	FLC15-24V/T	FLC30-24V/T	FLC75-24V/T
Capacity	15W 24V	30W 24V	75W 24V



h LED Driver : FLC200-24V/T (200W 24V)



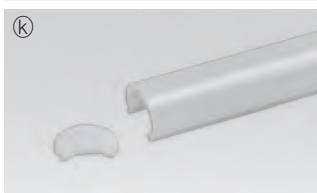
i Dimming Interface(0-10/1-10,DMX512)

FDA-L2M0 (200W, 2CH)

FDA-L5M (200W , 5CH)

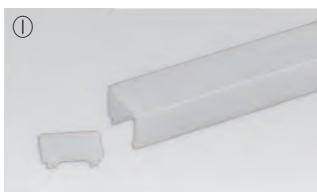


j Inline dimmer :RDVDIM(Max 75W in a row)



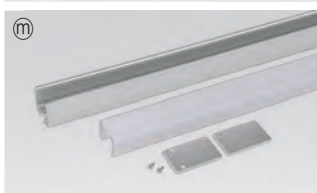
k Round diffuser

HDV6CVRM	HDV12CVRM	HDV18CVRM
6W	12W	18W



l Square diffuser

HDV6CVSM	HDV12CVSM	HDV18CVSM
6W	12W	18W



m Extrusion (1.2m)



n Connecting bracket : HDV-BRACKET3

Included in fixture



Super slim! Super light!

Super Slim LED Recessed Spotlight

FLX Spot DVS

FEELUX



FEELUX

FLX Spot DVS

LED for Kitchen cabinet, Displays & Furniture

Super Slim LED Recessed Spotlight





Product Features

- Linkable together with FLX DC Collection
- Single 4W diode eliminates multiple shadows
- Virtually no heat emission and no UV radiation
- Available in silver, gold, white, black
- To be used with constant voltage DC 24V driver
- Dimmable with available accessories

Specification

- Voltage : DC 24V
- Operating temperature : 0~45° C
- Lamp life : 40,000hr/70%
- Available color : 3000K, 4000K, 6000K
- Color rendering : Ra>85
- Energy efficiency : 80 lm/W
- Degree of protection : IP20
- Beam Angle : 60°
- Total energy consumption of 4.3W



Various color

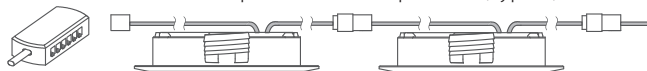
Single diode without multiple shadow





Installation

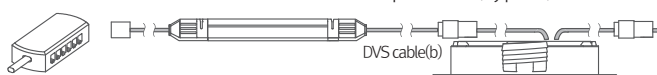
Linkable between FLX Spot DVS & FLX Spot DVS (Type A)



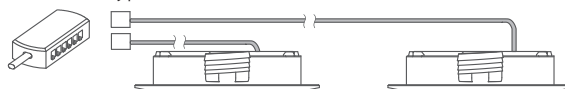
Linkable between FLX Spot DVS & FLX Stix NDV (Type A)



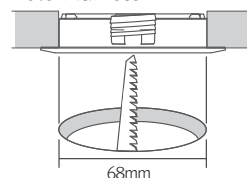
Linkable between FLX Stix NDV & FLX Spot DVS (Type A)



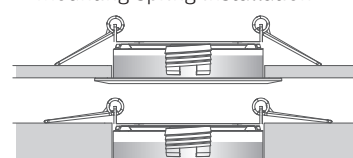
End Unit (Type B)



Hole Diameter

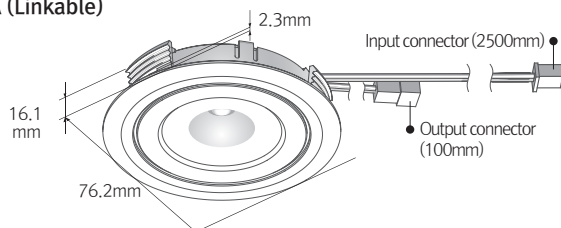


Mounting spring installation

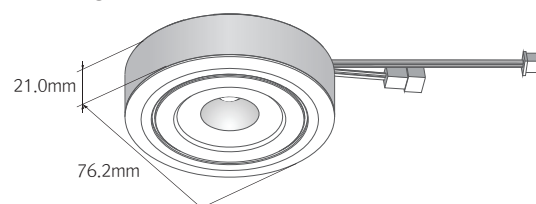


Dimension

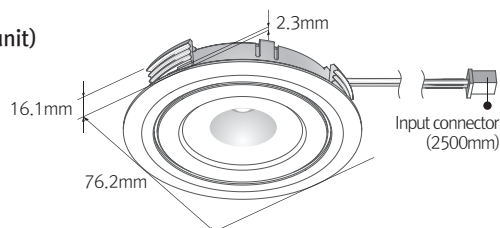
Type A (Linkable)



Surface mount ring



Type B (End unit)



Max. connection of linked fixtures

- FLX Stix DVS : Max 7pcs in a row
- LED Driver

Model Name	Max. units for Led driver			
	24V/15W	24V/30W	24V/75W	24V/200W
DVS4A40K-24V-WT	4	7	18	50
DVS4B40K-24V-WT	4	7	18	50

Accessories



Ⓐ FLX Spot DVS linkable type

White	Black	Gold	Silver
DVS4A 40K-24V-WT	DVS4A 40K-24V-BK	DVS4A 40K-24V-GD	DVS4A 40K-24V-SV

Ⓑ FLX Spot DVS end unit type

White	Black	Gold	Silver
DVS4B 40K-24V-WT	DVS4B 40K-24V-BK	DVS4B 40K-24V-GD	DVS4B 40K-24V-SV

Ⓒ Extension cable (Between FLX Spot DVS & FLX Spot DVS or 6 way distributor)

DVS cable(A) : 2,500mm

Ⓓ Connecting cable (Between FLX Spot DVS & FLX Spot DVS)

DVS cable(B) : 1,000mm



e Connecting cable(Between FLX Stix NDV & FLX Spot DVS)

NDVPC : 2500mm



f LED Driver with 6way distributor

Part No	FLC15-24V/T	FLC30-24V/T	FLC75-24V/ T
Capacity	15W 24V	30W 24V	75W 24V



g LED Driver : FLC200-24V/T (200W 24V)



h Dimming Interface (1-10V)

FDC-V10 (Max.48W)

FDC-L10 (Max.100W)



i Dimming Interface(0-10/1-10,DMX512)

FDA-L2M0 (200W, 2CH)

FDA-L5M (200W , 5CH)



j Mounting spring: DVS spring



k Mounting Spring(Back cover spring)

DVS BC SPRING



l Surface mount ring

White	Black	Gold	Silver
DVS MR-WT	DVS MR-BK	DVS MR-GD	DVS MR-SV



m Deco Ring

White	Black	Gold	Silver
DVS DR-WT	DVS DR-BK	DVS DR-GD	DVS DR-SV



n Door and motion detection sensor (DC) : FLS-M24V



o Human-body detection sensor (DC) : FLS-P24V

FEELUX

FLX Spot DVS Swivel

LED for Kitchen cabinet, Displays & Furniture

Super Slim Swivel LED Spotlight



Product Features

- Linkable together with FLX DC Collection
- Single 4W diode eliminates multiple shadows
- Virtually no heat emission and no UV radiation
- Available in silver, gold, white, black
- To be used with constant voltage DC 24V driver
- Dimmable with available accessories

Specification

- Voltage : DC 24V
- Operating temperature : 0~45° C
- Lamp life : 40,000hr/70%
- Available color : 3000K, 4000K, 6000K
- Color rendering : Ra>85
- Energy efficiency : 80 lm/W
- Degree of protection : IP20
- Beam Angle : 60°
- Total energy consumption of 4.3W



Various color

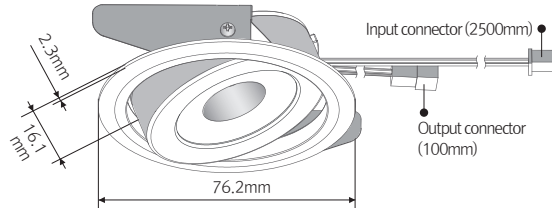


Swivels and tilts 20 °

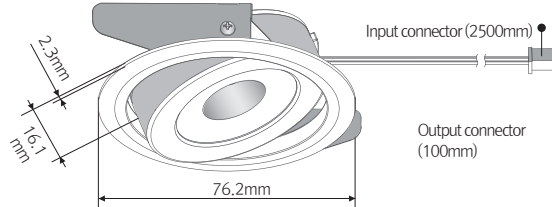


Dimension

Type A (Linkable)



Type B (End unit)



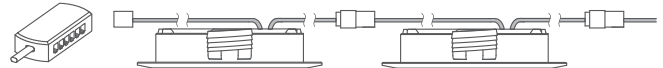
Max. connection of linked fixtures

- FLX Spot DVS Swivel : Max 7pcs in a row
- LED Driver

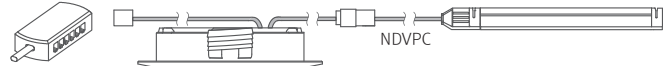
Model Name	Max. units for Led driver			
	24V/15W	24V/30W	24V/75W	24V/200W
DVS4A 40K-24V-SW-WT	4	7	18	50
DVS4B 40K-24V-SW-WT	4	7	18	50

Installation

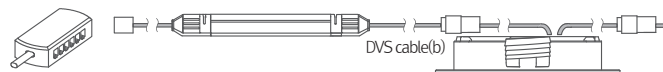
Linkable between FLX Spot DVS Swivel & FLX Spot DVS Swivel (Type A)



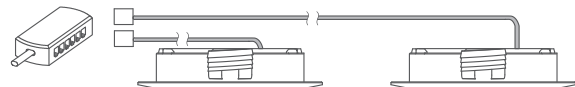
Linkable between FLX Spot DVS Swivel & FLX Stix NDV (Type A)



Linkable between FLX Stix NDV & FLX Spot DVS Swivel (Type A)



End Unit (Type B)





(a) FLX Spot DVS Swivel linkable type

White	Black	Bronze	Silver
DVS4A 40K-24V-SW-WT	DVS4A 40K-24V-SW-BK	DVS4A 40K-24V-SW-BZ	DVS4A 40K-24V-SW-SV



(b) FLX Spot DVS Swivel end unit type

White	Black	Bronze	Silver
DVS4B 40K-24V-SW-WT	DVS4B 40K-24V-SW-BK	DVS4B 40K-24V-SW-BZ	DVS4B 40K-24V-SW-SV



(c) Extension cable (Between FLX Spot DVS & FLX Spot DVS or 6 way distributor)
DVS cable(A) : 2,500mm



(d) Connecting cable (Between FLX Spot DVS & FLX Stix NDV)
DVS cable(B) : 1,000mm



(e) Connecting cable (Between FLX Stix NDV & FLX Spot DVS)
NDVPC : 2500mm



(f) LED Driver with 6way distributor

Part No	FLC15-24V/T	FLC30-24V/T	FLC75-24V/ T
Capacity	15W 24V	30W 24V	75W 24V



(g) LED Driver : FLC200-24V/T (200W 24V)



(h) Dimming Interface (1-10V)

FDC-V10 (Max.48W)
FDC-L10 (Max.100W)



(i) Dimming Interface (0-10/1-10, DMX512)

FDA-L2M0 (200W, 2CH)
FDA-L5M (200W, 5CH)



(j) Door and motion detection sensor (DC) : FLS-M24V



(k) Human-body detection sensor (DC) : FLS-P24V





FEELED LED Lighting

<u>MonoRail HO</u>	06	■
<u>MonoRail</u>	10	■
<u>MonoRail Spot</u>	18	■
<u>FLX Stix NDV</u>	26	■
<u>FLX Stix HDV</u>	32	■
<u>FLX Stix DDV</u>	38	■
<u>FLX Stix RDV</u>	46	■
<u>FLX Spot DVS</u>	54	■
<u>FLX Spot DVS Swivel</u>	58	■



FEELUX



FEELED **FLX Stix** series

NEW SOUTH WALES Gerard Lighting Head Office
96-112 Gow Street
Padstow
NSW 2211

Tel: +61 02 9794 9393

GERARD
LIGHTING

QUEENSLAND

107.3B Building 2-6 Leonardo Drive
Brisbane Airport
QLD 4007

Tel: +61 07 3621 9200

NORTH QUEENSLAND

27 Corporate Crescent
Garbutt
QLD 4814

Tel: +61 07 4779 0111

SOUTH AUSTRALIA

142-144 Fullarton Road
Rose Park
SA 5067

Tel: +61 08 8122 2360

WESTERN AUSTRALIA

77 Truganina Road
Malaga
WA 6090

Tel: +61 08 9209 7100

NORTHERN TERRITORY

20 Bishop Street
Wollner
NT 0820

Tel: +61 08 8122 2360

TASMANIA

Tel: +61 1300 799 300

VICTORIA

87 Moreland Street
Footscray
VIC 3011

Tel: +61 03 8394 3100

AUSTRALIAN CAPITAL TERRITORY

Unit 18 Fusion Business Park
27 Yallourn Street, Fyshwick
ACT 2609

Tel: +61 1300 799 300



FEELUX



W: www.concordlighting.com.au • T: 1300 799 300 • F: 1300 789 300