

# NXS Stainless Steel

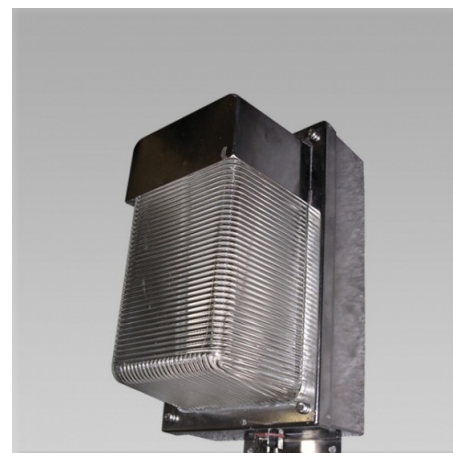
Corrosion resistant wall mount stainless steel bulkhead for extreme industrial and mining applications.

## Specification

- Marine grade 316 stainless steel body and visor with passivated finish
- Heavy duty borosilicate glass lens with internal prisms for optimum light distribution
- Smooth exterior for easy cleaning
- Trim secured to body by four stainless steel screws
- One piece, easy to replace silicone rubber gasket for all models
- All models with durable integral magnetic control gear
- 1 x 20mm cable entries for easy wiring access

## Product Codes

Code	Version	Dim (mm)	Mass (kg)
NXSS226C	2 x 26W PLC Wall Mt SS	297 x 190 x 178	5.9
NXSS70HPSI	70W HPS-I Wall Mt SS	297 x 190 x 178	5.9
NXSS70SCOM	70W HPS Mining Wall Mt SS	297 x 190 x 178	5.9
NXSS70HPS	70W HPS Wall Mt SS	297 x 190 x 178	5.9
NXSS70MH	70W HQI-E Wall Mt SS	297 x 190 x 178	6.0
NXSS80MV	80W MV Wall Mt SS	297 x 190 x 178	5.9



## Quick Specification

Pierlite NXS heavy duty die-cast LM6 aluminium body with prismatic borosilicate lens and integral HID or CFL lamp & gear.

## Design Application

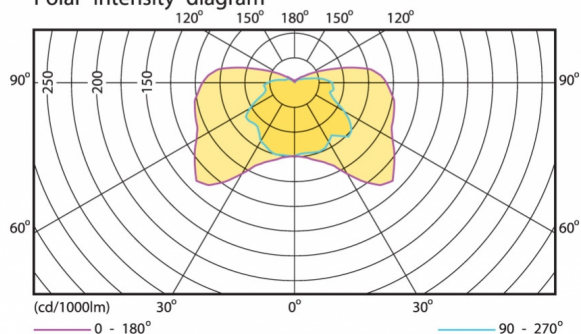
Ideal for extreme adverse conditions especially where corrosive chemicals are present or near salt water environments.

## Performance

NXS70HPS Ceiling  
L.O.R. = 0.68

1 x SHP 70W/CO-E base@C270  
1 x 5800 lm

Polar intensity diagram

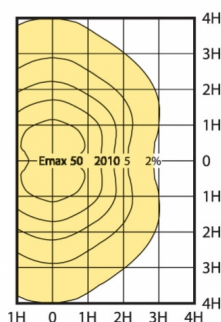


0°  
max I60 = 661 cd  
max I80 = 102 cd / 1000 lm  
max I90 = 93 cd / 1000 lm

PH649A

Horizontal Illuminance

H (m)	E <sub>max</sub> (lux)
3.0	48
3.5	35
4.0	27



IP66



Max Dim (mm)  
297 x 190 x 178

PDF Prepared: 23.01.2017 09:01am, Last page update: Oct 2013



**PIERLITE**  
professional lighting solutions