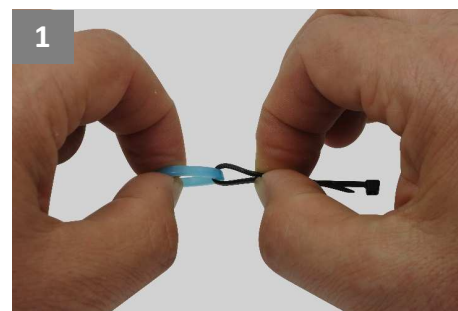
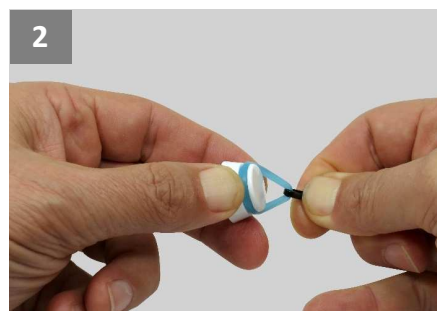


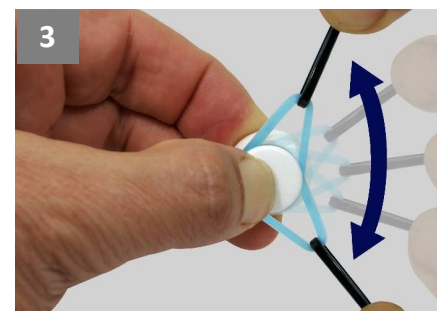
Fitting a coloured Dial Ring



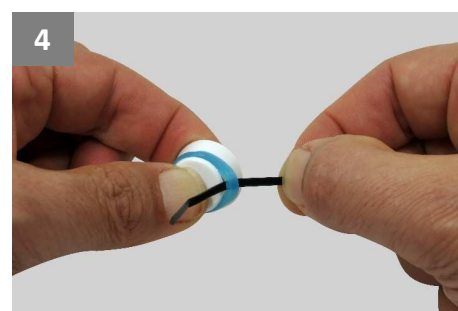
1 Loop a cable tie through the coloured Dial Ring and firmly hold the cable tie between thumb and forefinger.



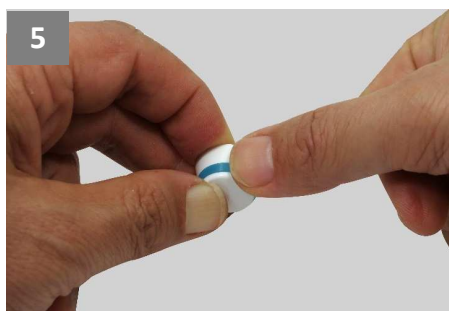
2 Loop the Dial Ring over the Dial and push it into the groove on one side. **NOTE:** the Dial Ring has a bevelled edge and the smaller diameter should face towards to top of the Dial.



3 Using the cable tie, stretch the Dial Ring and rotate it 90 degrees through the groove a few times to ensure it is fully engaged in the groove.



4 Release and remove the cable tie.



5 Run a thumb around the face of the Dial Ring so that it sits properly in the groove

Gerard Lighting Pty Ltd reserves the right to alter the specifications, designs or other features of any items and to discontinue any items at any time without notice and without liability. While every effort is made to ensure that all information in this user and installation guide is correct, no warranty of accuracy is given and Diginet shall not be liable for any error.

© Copyright This user and installation guide is copyright to Gerard Lighting Pty Ltd. Except as permitted under relevant law, no part of this user and installation guide may be reproduced by any process without written permission of and acknowledgement to Gerard Lighting Pty Ltd.

Clipsal Saturn™ and Clipsal Saturn Zen™ are trademarks of Schneider Electric (Australia) Pty Ltd

DIGINET.NET.AU

Product of Gerard Lighting Pty Ltd

ABN – 89 095 788 864
96-112 Gow Street
Padstow NSW 2211
Diginet is a brand of Gerard Lighting Pty Ltd

Contact

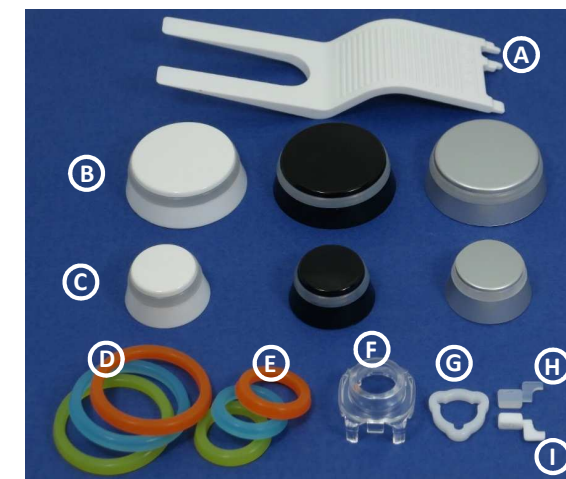
General Enquiries: 1300 95 DALI (3254) or sales@diginet.net.au
Technical Services: 1300 95 3244 or support@diginet.net.au
Fax: 1300 95 3257

Adaptor kit for LEDsmart and RAPIX Rotary dimmers/switches

This kit has been designed to adapt Diginet LEDsmart and RAPIX Rotary dimmers/switches to suit Clipsal Saturn™ and Clipsal Saturn Zen™ wall plates.

(Clipsal Saturn™ and Clipsal Saturn Zen™ are products of Schneider Electric (Australia) Pty Ltd)

Kit contents

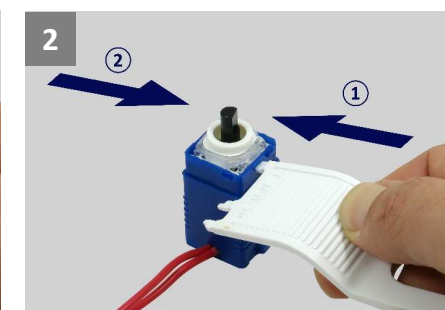


- A - Bezel and Dial Removal Tool
- B - Large Dial pack
- C - Small Dial pack
- D - Light Ring: Large (Blue, Green, Orange)
- E - Light Ring: Small (Blue, Green, Orange)
- F - Rotary Retaining Bezel
- G - Dial Clamp Ring
- H - Rotary Adaptor (Clear)
- I - Rotary Adaptor (White)

Installation



1 Use the Bezel and Dial Remove Tool (A) to engage with the slot on the side of the push button housing, as shown above.



2 Push the tool into the slot until the clear bezel around the button releases from the housing. **Repeat** the process on the other side of the housing.



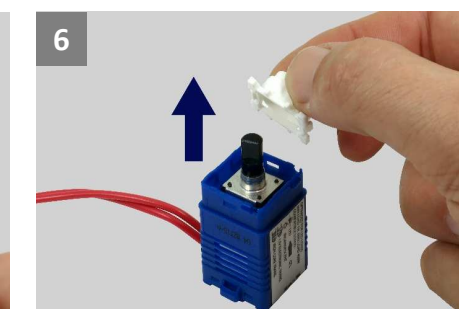
3 The clear bezel can now be lifted to remove from the housing.



4 Use the Bezel and Dial Removal tool to engage with the two holes in the white Rotary Retaining Ring, as shown above.



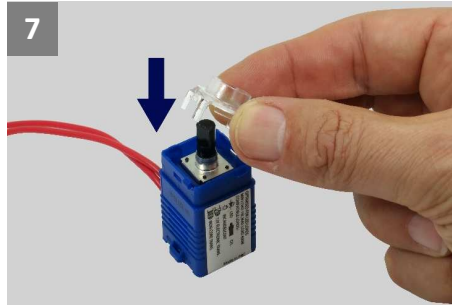
5 Firmly push the tool into the two holes, then rotate the tool away from the housing to release the Rotary Retaining Ring. **Repeat** the process on the other side of the housing.



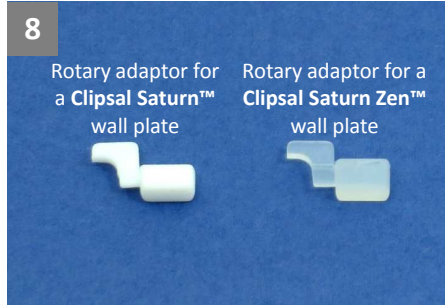
6 The white Rotary Retaining Ring can now be lifted to remove from the housing.

Please Turn Over ➡

Continued from previous page



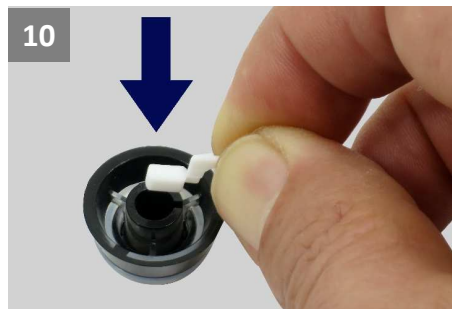
Take a replacement Rotary Retaining Bezel (F) from the kit. Place the bezel into the housing, ensuring the four bezel legs line up with the bezel retaining holes in the housing. Push the bezel firmly into place



Take a silicon Rotary Adaptor from the kit (H or I).
NOTE:
The **WHITE** Rotary Adaptor (I) is for a **Clipsal Saturn™** wall plate.
The **CLEAR** Rotary Adaptor (H) for a **Clipsal Saturn Zen™** wall plate.



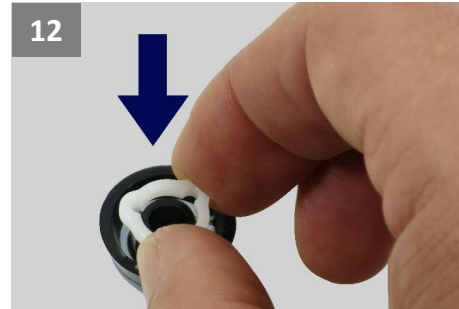
Chose a dial from the kit with the appropriate size and colour for the application. Locate the slot in the rotary shaft sleeve.



Insert the silicon Rotary Adaptor into the shaft sleeve, ensuring the vertical tab is inserted into the slot.



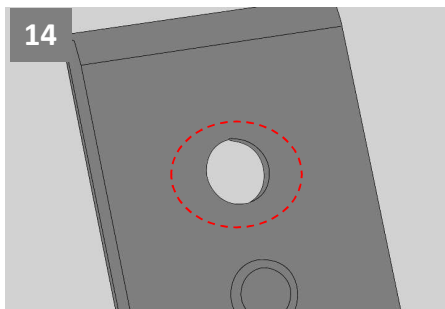
The picture above shows the silicon Rotary Adaptor installed correctly in the sleeve, with the vertical tab located in the slot.



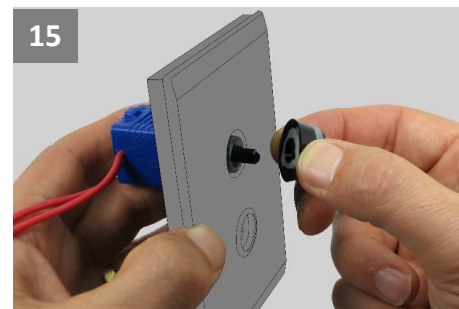
Take a Dial Clamp Ring (G) from the kit and push it firmly onto the outside of the shaft sleeve.



The picture shows a Dial Clamp Ring installed correctly.



Remove the encapsulated button and bezel from the Clipsal Saturn™ or Clipsal Saturn Zen™ wall plate as per the manufacturers instructions.



The adapted LEDsmart or RAPIX dimmer/switch can now be mounted the wall plate and the Rotary Dial pushed firmly onto the dimmer shaft.
NOTE: The dimmer shaft is 'D' shaped and needs to be keyed into the Dial Sleeve.

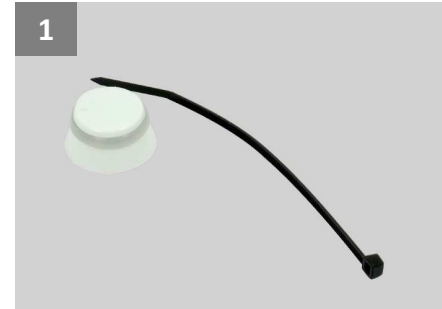
Replacing the Dial Ring



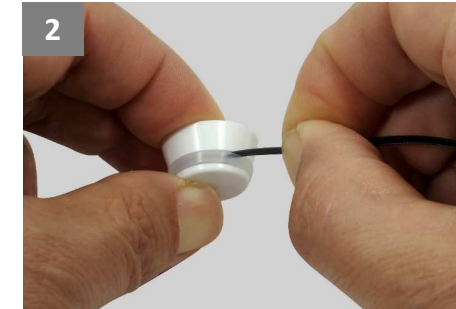
The silicon Dial Ring on a LEDsmart or RAPIX Rotary is supplied with a clear finish. This allows the white LED indicator to provide a white glow around the dial.

However, the clear Dial Ring can be replaced with a green, orange or blue version supplied in the kit. This changes the appearance of the dial and the colour of the LED indicator from white to the colour of the replacement Dial Ring.

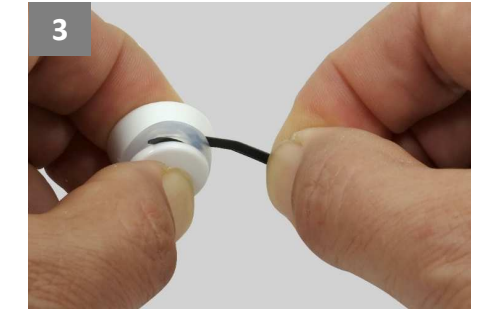
Removing the Dial Ring



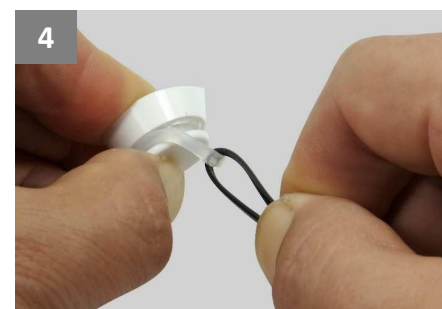
To replace the silicon Dial Ring, use a small standard cable-tie, such as the one supplied with the LEDsmart Rotary dimmer.



Insert the point of the cable-tie between the inner edge of the Dial Ring and the groove it is located in.



Push the cable tie along the edge of the groove, rotating the dial towards the cable-tie at the same time. Continue to push the cable-tie along the groove until the point pops through the front edge of the Dial Ring groove.



Hold both ends of the cable-tie and pull the Dial Ring off the dial.