

## Section

ECLATEC

# Pixel S LED

Category P LED Luminaire



## DESCRIPTION

The Pixel LED-S Series provides the latest LED lighting technology in an aesthetically pleasing luminaire which offers excellent spill light, glare control and produces no upward light. A highly efficient lens design provides a symmetrical streetlight distribution which is suitable for Pedestrian Areas, Car Parks, Cycleways and Precinct lighting applications.

Based upon the high reliability of LEDs, the robust construction of the luminaire housing, an IP66 rating and with the elimination of lamp replacements, significantly reduces maintenance requirements, providing unprecedented cost savings.

The sleek die-cast aluminium body is provided with a hinged cover which is secured via a latch to provide tool free access to the luminaire for ease of installation and maintenance. Available with 24 LEDs or 48 LEDs, offers flexibility to optimise the lighting scheme for your desired application.

## PERFORMANCE SUMMARY

- 24 x LEDs, total power consumption 33W
- 48 x LEDs, total power consumption 60W
- Colour Temperature: 4,200K
- Colour Rendering Index: >70
- Upward Light Output Ratio: <3%
- Integral electronic control gear

## Section

### SPECIFICATIONS

#### Electrical Characteristics:

- Input Voltage: 216-260V – 50/60Hz
- Power Factor: > 0.9
- System watts: 33W-60W

#### Optical Characteristics:

- CCT: 4200K
- CRI: > 70
- Module of 24 or 45 LEDs
- IP 66 LED module
- Toughened glass visor with silicone foam gasket

#### Mechanical Characteristics:

- Die-cast aluminium body and frame
- Maximum Weight: 6.6kg
- IP66 optical chamber
- Hinged access cover with quick release latch
- Stainless steel toggle latches and fasteners
- Side entry mounting
- IP66 optical / control gear chamber
- Black polyester powdercoat finish as standard

#### Control Characteristics:

- IP66 Control chamber

#### Environmental & Standards:

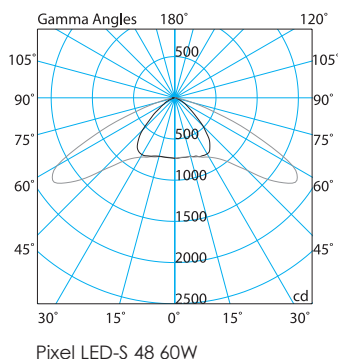
- Ambient Operation Temps: - 10° C to 40° C
- Operating Humidity Range: 10% - 95% Relative humidity
- IK 09 Impact rating
- EMC compliant

#### Options

- Double insulation
- Mounting bracket
- Polyester powdercoat finish in various RAL colours

### PHOTOMETRY

Please contact your Roadway & Infrastructure Lighting representative for photometric information specific to your project.



## Section

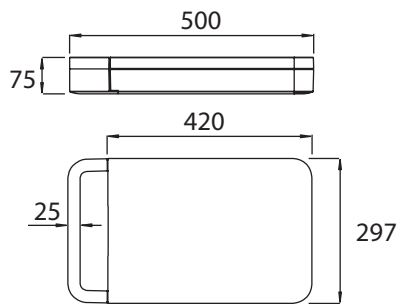
### ORDER CODES

Description	Type	Weight (kg)	Order Code
Pixel LED-S 24 33W	LED 24	6.6	EJS9901L33
Pixel LED-S 48 60W	LED 48	6.6	EJS9901L60
Pixel Top Fixation PM 2° D60mm LAR	-	-	EJPM02601LAR
Pixel Top Fixation PM 5° D60mm LAR	-	-	EJPM05601LAR
Pixel Top Fixation PM 10° D60mm LAR	-	-	EJPM10601LAR
Pixel Top Fixation PM 7° D60mm LL54	-	-	EJPM07601LL54

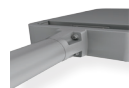
Note: Do not forget to choose top fixation adaptor for LAR mounting type.

Note: The above codes are for standard products only. Please refer to your local Roadway representative for more options.

### DIMENSIONS



LAR Fixation



LL Fixation



Top Fixation for LAR