

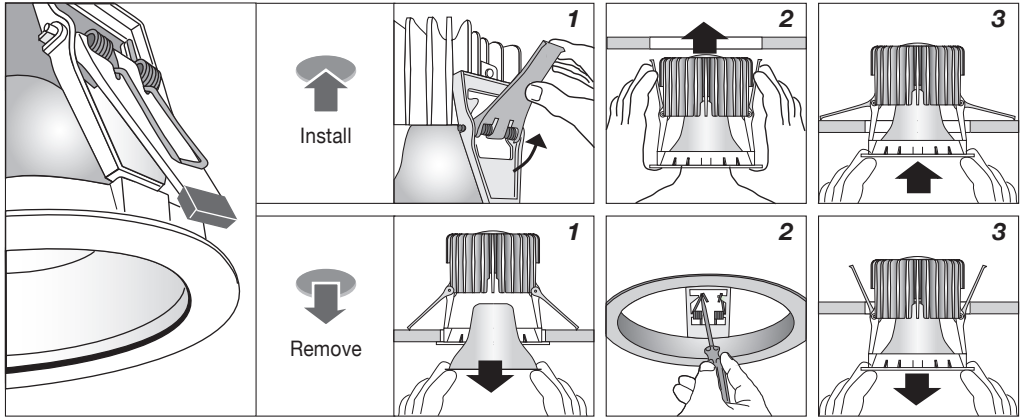
DOT Downlights
INSTALLATION INSTRUCTIONS



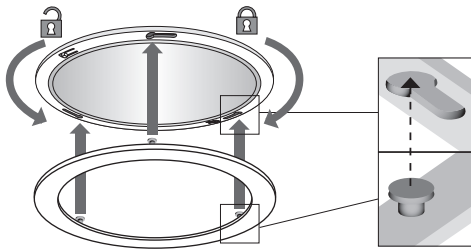
LED Series Downlights

IP 20 CE

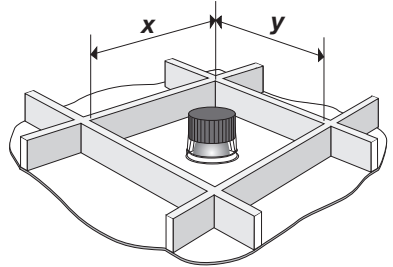
DOT LED



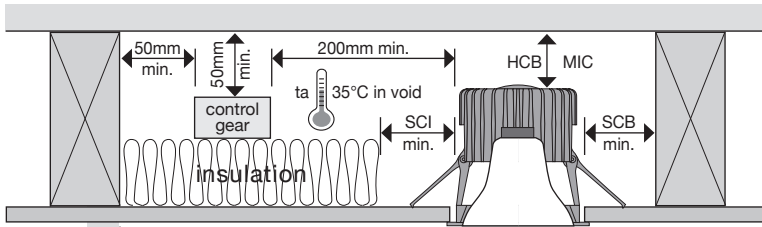
Accessories



$x \times y = 0.25 \text{ M}^2 \text{ min.}$



Building Element Clearances



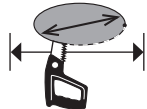
Luminaire not suitable for covering with thermally insulated material.



Note: Remote Control Gear must not be covered by insulation.

For Specific Driver Details Refer:

- TRIDONIC = www.tridonic.com
- DIGINET = www.dignet.net.au
- TCI = www.tcisaronno.com



For HCB, SCB and SCI dimensions – refer overleaf.

- HCB = Minimum Height Clearance Building Element
- SCB = Minimum Side Clearance Building Element
- SCI = Minimum Side Clearance Insulation
- MIC = Minimum Insulation Clearance

DOT LED Series INSTALLATION INSTRUCTIONS

ROHS Compliant
Supply Voltage: 220/240V 50Hz AC



	Wattage					AS/NZS 60598.2.2 :2016
--	---------	--	--	--	--	------------------------------

DOT 9100P/C – Performance & Colour Series

DOT 9134/8	16.0	92	0.7	0.10	IP 20	CA90
DOT 9154/8	21.7	92	0.7	0.10	IP 20	CA90

DOT 9400P/C – Performance & Colour Series

DOT 9438	16.0	102x102	0.7	0.19	IP 20	CA90
DOT 9458	21.7	102x102	0.7	0.19	IP 20	CA90

DOT 9700XL – Excel Series

DOT 9724XL/8	10.3	140	1.1	0.25	IP20	CA90
DOT 9734XL/8	13.8	140	1.1	0.25	IP20	CA90
DOT 9754XL/8	19.4	140	1.1	0.25	IP20	CA90
DOT 9774XL/8	26.9	140	1.1	0.25	IP20	CA90
DOT 9794XL/8	34.6	140	1.1	0.25	IP20	CA90
DOT 97104XL/8	40.5	140	1.1	0.25	IP20	Do not cover
DOT 97144XL/8	56.0	140	1.1	0.25	IP20	Do not cover

DOT 9700P/B – Performance & BaseSeries

DOT 9724/8	10.3	140	1.0	0.36	IP20	CA90
DOT 9734/8	13.7	140	1.0	0.10	IP20	CA90
DOT 9754/8	19.3	140	1.0	0.19	IP20	CA90
DOT 9774/8	26.9	140	1.0	0.19	IP20	CA90
DOT 9794/8	34.6	140	1.0	0.20	IP20	CA90
DOT 97104/8	40.5	140	1.0	0.23	IP20	CA90
DOT 97144/8	56.0	140	1.0	0.23	IP20	CA90

DOT 9800P/C – Performance & Colour Series

DOT 9828	10.3	146x146	1.0	0.19	IP 20	CA90
DOT 9838	13.7	146x146	1.0	0.19	IP 20	CA90
DOT 9858	19.3	146x146	1.0	0.19	IP 20	CA90
DOT 9878	26.9	146x146	1.0	0.19	IP 20	CA90
DOT 9898	34.6	146x146	1.0	0.19	IP 20	CA90
DOT 98108	40.5	146x146	1.0	0.19	IP 20	CA90
DOT 98148	56.0	146x146	1.0	0.19	IP 20	CA90

DOT 9900XL/P – Excel & Performance Series

DOT 9934/8	13.5	175	1.4	0.28	IP20	CA90
DOT 9954/8	19.0	175	1.4	0.28	IP20	CA90
DOT 9974/8	27.1	175	1.4	0.28	IP20	CA90
DOT 9994/8	33.6	175	1.4	0.28	IP20	CA90
DOT 99104/8	38.9	175	1.4	0.28	IP20	CA90
DOT 99144/8	53.5	175	1.4	0.28	IP20	CA90
DOT 99174/8	68.1	175	1.4	0.28	IP20	CA90

DOT 9100SM, 9400SM, 9700SM & 9800SM – Surface Mounted Series

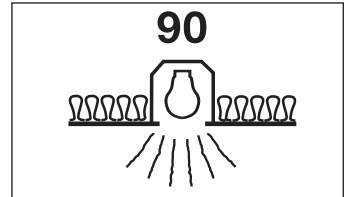
DOT 9138SM	16.0	–	0.8	–	IP 20	N/A
DOT 9438SM	16.0	–	1.4	–	IP 20	N/A
DOT 9734SM/8	13.6	–	1.6	–	IP20	N/A
DOT 9754SM/8	19.3	–	1.6	–	IP20	N/A
DOT 9774SM/8	26.9	–	1.6	–	IP20	N/A
DOT 9794SM/8	34.6	–	1.6	–	IP20	N/A
DOT 9838SM	13.7	–	1.6	–	IP 20	N/A
DOT 9858SM	19.3	–	1.6	–	IP 20	N/A
DOT 9878SM	26.9	–	1.6	–	IP 20	N/A
DOT 9898SM	34.6	–	1.6	–	IP 20	N/A

DOT 9100TL/P-C – Performance & Colour Trim Less Series

DOT 9134TLC/8	16.0	155x155	1.3	0.10	IP 20	CA90
DOT 9134TLS/8	16.0	135x135	1.3	0.10	IP 20	CA90
DOT 9154TLC/8	21.7	155x155	1.4	0.10	IP 20	CA90
DOT 9154TLS/8	21.7	135x135	1.4	0.10	IP 20	CA90

CLASSIFICATIONS
FOR INDOOR USE ONLY

CA90 LUMINAIRES



Risk of fire – Building insulation must not cover this luminaire.

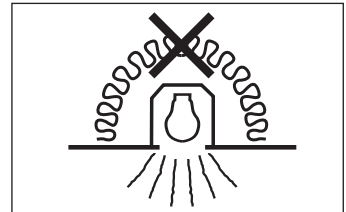
Building insulation may abut the luminaire.

Required clearance from structural members and building elements.

HCB = 50mm SCB = 50mm

MIC = 50mm SCI = 0mm (Abutted)

DO NOT COVER LUMINAIRES



Risk of fire – Building insulation must not cover this luminaire.

Required clearance from structural members and building elements.

HCB = 50mm SCB = 50mm

SCI = 50mm

WARNING (New Zealand Only)

This luminaire is not suitable for installation in locations where the thermal insulation is present, or may reasonably be expected to be installed in the future, or where there is a likelihood of other combustible material, e.g. leaves or vermin debris, etc. collecting on or around the luminaire. It is not suitable for domestic installations or installation in residential areas of non-domestic installations (Residential institutions, Hotels, boarding houses, hospitals, accommodation houses, motels, hostels and the like).