

EXB2493A BOLLARD LIGHT

This manual contains important information about the EXB2493A LED Bollard light. All Crompton Lighting Products are designed & manufactured to comply with State and Commonwealth Government Regulations relevant to electrical safety standards and Electro-Magnetic Compatibility (EMC). These instructions form an integral part of this compliance to ensure your safety. Crompton Lighting recommends safety first when installing/ using or maintaining electrical equipment. If you have any questions regarding the use or performance of this equipment please contact us on; Ph: 1300 799 300, Fax: 1300 789 300 or Email: info@crompton.com.au

01 PRODUCT INFORMATION

- 01.1 **Model:** EXB2493A
 01.2 **Description:** Bollard light comprised of powder coated Aluminium die-cast body and base. Interior of the body is fitted with 3 x 3W Max LED and driver, associated wiring and terminal block.
 01.3 **Variants:**
 01.3.1 Product Code: 27051 – EXB2493A

02 SAFETY WARNINGS

- 02.1 This product must be installed by a licensed electrician in accordance with current version Australian New Zealand Wiring Rules AS/NZS 3000.
 02.2 Always read the instructions fully before installation & use; keep for future reference.
 02.3 Crompton Lighting recommends that this product be used on a circuit board protected by an Earth Leakage Circuit Breaker or Safety Switch.
 02.4 Always use the light fitting on the correct power supply and do not exceed the maximum wattage; check the rating details (as over heating and damage may occur).
 02.5 LED will produce some heat and the exterior may become hot, ensure the light fitting is not placed closer than 0.6 metres to any illuminated surface/object, heat sensitive & flammable materials and allow suitable ventilation & air flow around the light fitting.
 02.6 Do not cover with any material and install clear of curtains or drapes.
 02.7 To prevent possibility of burns, wherever possible, install out of reach to prevent contact with skin.
 02.8 Close supervision is required when used near children, infirm persons or animals.
 02.9 Do not immerse any part of the light fitting in water or any other liquids.
 02.10 Always ensure light fitting is fully assembled before connecting to the power supply.
 02.11 Not suitable for use near flammable liquids, vapours, gases or in explosive environments.
 02.12 Regularly inspect the light fitting for any damage. If found defective in any way immediately cease use.
 02.13 There are no user replaceable components in this fitting including LED.
 02.14 Do not attempt to modify this fitting in any way from the condition 'as supplied'.
 02.15 The EXB2493A is a Class I item, and it requires an effective earth connection.

03 PRECAUTIONS & LIMITATIONS

- 03.1 **LOCALITY.** This Crompton EXB2493A is suitable for 'outdoors' locations; it is rated (AS 60529:2004) at IP54.
 03.1.1 It is not suitable to install this fitting in a location that has got sloping in surrounding surface as water may puddle underneath and enter the fitting. Consider the suitability of the product in the intended environment. Factors such as UV, moist substrates, heat, vibration, and industrial fall-out will all affect the durability of the luminaire.
 03.2 **POSITIONING.** Vertically upright on rigid horizontal surface.
 03.3 **COMPATIBLE ON SAME CIRCUIT.** This Crompton EXB2493A luminaire should not be installed on a switched circuit that also have electronic converters wired in.
 03.4 **DIMMING.** The EXB2493A can't be dimmed.
 03.5 **24/7 OPERATIONS.** The EXB2493A is suitable for continuous operations i.e., 24 hours a day and 7 days a week.

04 INSTALLATION PROCEDURE

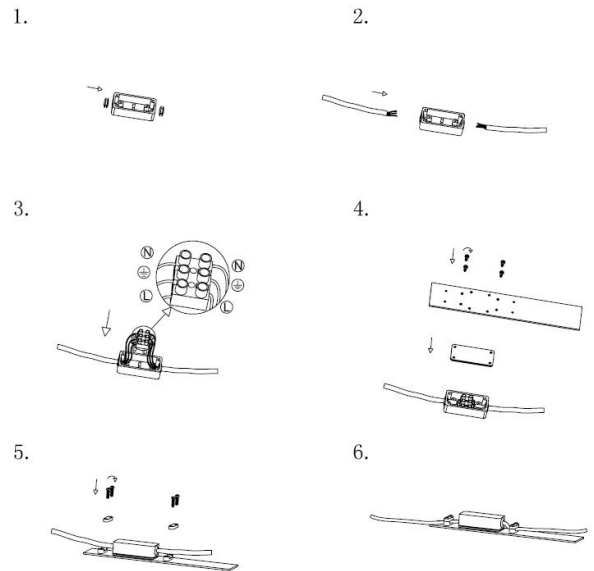
- 04.1 Ensure the power to the circuit being used is isolated and will stay isolated until the job is complete; Lock out and Tag out.
 04.2 Remove the components from the display carton & ensure all packaging materials are fully removed before beginning assembly.
 04.3 Contents of the carton are: -
 04.3.1 EXB2493A Bollard light
 04.3.2 Mounting Kit
 04.3.3 Terminal block with accessories
 04.3.4 This user manual
 04.4 Select the appropriate operating position for your Crompton EX2493A; See also Para 03. The factors to consider are:
 04.4.1 Select a location where underground water is less likely to form a puddle/pool.
 04.4.2 The supply cable extends through conduit to the bollard in centre and sufficiently long to reach the terminal block.
 04.5 Route the supply cable (protected by suitable rigid or corrugated conduit) so that the wiring will enter the body of the fitting from the bottom of the base. The supply wiring chosen for this installation is to be selected, installed and tested in accordance with AS/NZS3000-Wiring Rules.



The supply cable must be round in cross section to permit the rubber grommet to seal effectively. Use of flat profile TPE will void the warranty.

- 04.6 **Prepare the mounting surface**
 04.6.1 If installing on concrete base, it may be necessary to dig the surface to prepare mounting surface. Ensure all applicable building codes and regulations are followed.
 04.6.2 Dig an appropriate size foundation hole in the ground
 04.6.3 Pour appropriate amount of prepared cement into foundation hole

- 04.6.4 While the cement is wet install the four J bolts using the base as guide, below the surface/under ground level such that the threaded ends of J-bolts protrude vertically up. The threaded ends of the J-Bolts must pass through the holes in each of four holes in the base. When fully installed the projection of threaded end above the mounting surface must be 27mm (+/- 1mm) exactly. This is important to make sure that nuts securely fits on the threaded end with enough threads available; not being too few or too many.
 04.7 Connect the supply wiring to the internal wiring using the terminal block as follows: -
 04.7.1 Brown coloured insulated conductor from the supply is terminated at the wire way marked 'A' or 'L' or brown internal wire.
 04.7.2 Blue (N) coloured insulated conductor from the supply is terminated at the wire way marked 'N' or blue internal wire
 04.7.3 Green & Yellow is connected to the wire way marked with '⊕' or 'E' symbol. This wire should be 10mm longer than the active and neutral conductors such that it would be the last to disengage should a force be applied, and;
 04.7.4 Secure the supply cable with the cable anchor assembly (where fitted); taking care not to for crush the conductors and insulators when tensioning the two fasteners. Check that there is sufficient tension by applying a 60 N pull force for 1 second – the conductors, insulation and sheathing are to move no more than 2mm.
 04.7.5 See below figure for detailed steps.



- 04.8 Ensuring that the screws are correctly in mounting surface; secure the base to the mounting surface.
 04.9 Tension the screws evenly so as not to distort the base.
 04.10 Remove the Lock-Out Tag; Energise the circuit (turn the switch to 'ON').
 04.11 Always dispose of packaging in an environmentally friendly manner.

05 CARE & CLEANING

- 05.1 To clean, turn off at the wall switch, then when the LEDs are cool to the touch; wipe over with a damp cloth. Do not use solvent based or abrasive cleaning compounds
 05.2 Do not insert any object or substance into the LED for cleaning purposes.

06 REPLACEMENT PARTS & LAMPS

- 06.1 There are no user maintainable items on this EXB2493A luminaire including LED.

07 TECHNICAL INFORMATION

- 07.1 **Operating position:** on any rigid horizontal surface, vertically upright (outdoors)
 07.2 **Electrical Class:** I
 07.3 **Electrical Safety:** Complies with AS/NZS 60598.2.1
 07.4 **EMC :** Complies with AS/NZS CISPR 15
 07.5 **Supply:** 230-240V – 50/60Hz
 07.6 **Ingress protection:** IP 54

08 DISCLAIMER

- 08.1 Crompton Lighting reserves the right to change specifications or designs described in these instructions without notice and without obligation
 08.2 This document subject to E & O E